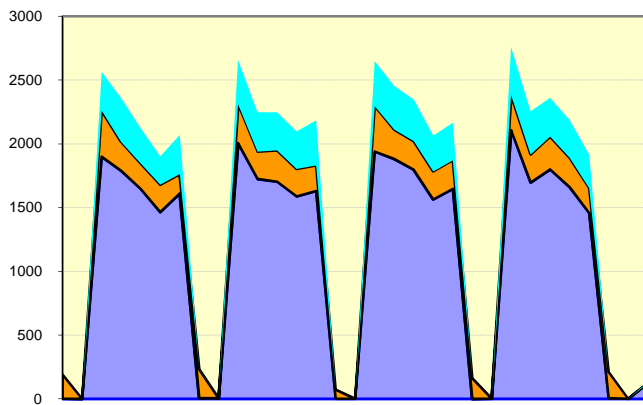
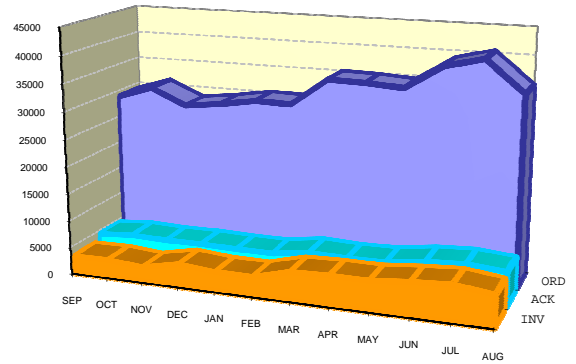





## E-TRADING STATISTICS – AUGUST 2009 (EXCLUDING PHARMACY)

TRANSACTIONS PER DAY



GROWTH



-  The Stock Response / Confirmation Message
-  The Invoice Message
-  The Purchase Order Message

These two charts illustrate the volume of traffic passing through the GHX Exchange.

## E-TRADING STATISTICS – AUGUST 2009 (EXCLUDING PHARMACY)

### ACTIVE SELLING ORGANISATIONS

*See the notes at the end of this document, for an explanation of what the values represent.*

ORGANISATIONS	T/R	ORD	INV	CNF	TYPE
10087 - Johnson & Johnson Medical Ltd	172	3025	142		eLink
10521 - Covidien (UK) Commercial Ltd	160	2044	1529	3966	eLink
10513 - Depuy International Ltd	49	997		883	eLink
10509 - Bard Ltd	33	581	81		eLink
10511 - Boston Scientific Ltd	31	1210	475	708	eLink
10262 - B. Braun Medical Ltd	30	434			eLink
10518 - Medtronic Ltd	28	883		405	eLink
10224 - Vygon UK Ltd	27	376	23		eLink
10127 - Henleys Medical Supplies Ltd	23	146			eMail
10259 - Stryker UK Ltd	22	512		23	eLink
10057 - Baxter Healthcare Ltd	22	257			eLink
10090 - Bunzl Healthcare Ltd	21	4426	2227		eLink
10705 - Terumo UK	21	195			eMail
10507 - Arizant UK	21	121			eMail
10742 - Cook UK Ltd	20	603			eMail
10695 - Intersurgical Ltd	20	231			eMail
10678 - Zimmer Ltd	19	255			eMail
10272 - Edwards Lifesciences Ltd	18	212		142	eLink
10791 - Mana-Tech Ltd	18	80			eMail
10984 - Synthes Stratec Medical Ltd	17	391			eMail
10691 - Cory Brothers	17	112			eMail
10510 - Becton Dickinson UK Ltd	17	109			eMail
10229 - Rocket Medical PLC	17	108			eMail
10082 - Fresenius Kabi Ltd	17	104			eLink
10121 - Abbott Laboratories Ltd	16	138			eMail
11078 - Coloplast Ltd	16	88			eMail
10517 - Kimal Plc	16	68			eLink
10305 - Physio Med Services Ltd	16	67			eMail
10708 - Alexandra Plc	15	456			eMail
10701 - Sunlight Clinical Solutions	15	270			eMail
10789 - Conmed Linvatec UK Ltd	15	138			eMail
10781 - Intavent Orthofix Ltd	15	89			eMail

**E-TRADING STATISTICS – AUGUST 2009**  
(EXCLUDING PHARMACY)

ORGANISATIONS	T/R	ORD	INV	CNF	TYPE
10713 - Arthrocare UK Ltd	15	85			eMail
11646 - Smith & Nephew Endoscopy	14	207			eMail
10633 - Molnlycke Health Care Ltd	14	172		109	eLink
10596 - Biomet UK Ltd	14	155			eMail
10286 - Summit Medical Ltd	14	49			eMail
10989 - Timesco of London	13	87			eMail
10696 - Unomedical Limited North Moons Moat	13	64			eMail
10651 - Altomed Ltd	13	57			eMail
10716 - Astra Tech Ltd	13	54			eMail
10697 - Medasil (Surgical) Ltd	13	39			eMail
10415 - Trulife Ltd	12	341			eMail
11608 - St Jude Medical UK Ltd	12	157			eMail
10756 - Forth Medical Ltd	12	91			eMail
10083 - Alcon Laboratories (UK) Ltd	12	82			eMail
11708 - Kapitex Healthcare Ltd	12	79			eMail
11809 - Fisher & Paykel Healthcare Ltd	12	68			eMail
10467 - Sunrise Medical Ltd	12	60			eMail
11812 - UK Medical Ltd	12	40			eMail
10692 - Daniels Healthcare	12	30			eMail
10792 - Medgraphics	12	29			eMail
10538 - Smith and Nephew Orthopaedics	11	144			eMail
11692 - Smiths Medical International Ltd	11	124			eMail
10911 - Proact Medical Ltd	11	82			eMail
11142 - Teleflex Medical Ltd	11	75			eMail
10779 - Hospital Metalcraft Ltd	11	74			eMail
10793 - Medi UK Ltd	11	64			eMail
10727 - Biomérieux UK Ltd	11	52			eMail
10408 - John Weiss & Son Ltd	11	36			eMail
10744 - Dako UK Ltd	11	25			eMail
10966 - Schuco International (London) Ltd	11	21			eMail
11943 - Olympus Keymed Ltd	10	164			eMail
10997 - Vernacare Ltd	10	75			eMail
10410 - Oxoid Ltd	10	63			eMail
10755 - Flexicare Medical	10	59			eMail
11606 - Arjo Ltd	10	59			eMail

**E-TRADING STATISTICS – AUGUST 2009**  
(EXCLUDING PHARMACY)

ORGANISATIONS	T/R	ORD	INV	CNF	TYPE
10784 - Karl Storz Endoscopy (UK) Ltd (Consumables)	10	58			eMail
11686 - Mercian Surgical Supply Co Ltd	10	44			eMail
10717 - Athrodax Ltd	10	22			eMail
10412 - Squadron Medical	9	1580			eLink
11722 - Arthrex Ltd	9	89			eMail
11704 - Cardinal Health UK 306 Ltd	9	79			eMail
12880 - Huntleigh Healthcare Ltd (Luton) Pressure Area Care Division	9	62			eMail
10315 - BSN Medical Ltd	9	57			eMail
11662 - Draeger Medical Ltd	9	55			eMail
11003 - Western Laboratory Solutions	9	54			eMail
10402 - Gambro Lundia AB	9	53			eMail
11545 - Merit Medical UK Ltd	9	48			eMail
11157 - 3M Health Care Ltd	9	47			eMail
11146 - VWR International Ltd	9	46			eMail
10988 - Therapy Equipment Ltd	9	42			eMail
10238 - Roche Diagnostics	9	41			eMail
10719 - Fannin (UK) Ltd	9	38			eMail
10473 - Fisher Scientific UK Ltd	9	34			eMail
11611 - Homecraft Rolyan Ltd	9	34			eMail
10398 - Codan Ltd	9	23			eMail
12993 - Synergy Healthcare Plc	8	101			eMail
12875 - Toffeln (Bristol)	8	97			eMail
11803 - Ambu Ltd	8	85			eMail
11536 - Cardinal Health UK 223 Ltd	8	84			eLink
11676 - Philips Medical Systems UK Ltd	8	64			eMail
11687 - Ossur UK	8	61			eMail
10189 - Bausch and Lomb (UK) Surgical	8	54			eMail
10913 - Promedics Ltd	8	39			eMail
10748 - Desoutter Medical Ltd	8	36			eMail
11718 - Wright Medical UK Ltd	8	31			eMail
10723 - BDF Ltd	8	31			eMail
10309 - Baxa Ltd	8	31			eMail
10739 - Clinipak Ltd	8	27			eMail
10594 - Hospira	8	25			eMail

**E-TRADING STATISTICS – AUGUST 2009**  
(EXCLUDING PHARMACY)

ORGANISATIONS	T/R	ORD	INV	CNF	TYPE
10710 - DLS Medical	8	25			eMail
11747 - Mantis Surgical Ltd	8	23			eMail
10693 - Eschmann Holdings Ltd	8	21			eMail
10604 - Rayner Intraocular Lenses Ltd	8	20			eMail
11941 - Carl Zeiss Ltd	8	18			eMail
10982 - Leica Biosystems Peterborough Ltd	8	18			eMail
10698 - Nikomed Ltd	8	15			eMail
10754 - Eurosurgical Ltd	8	14			eMail
11721 - Medisavers	7	90			eMail
11659 - KCI Medical Ltd	7	78			eMail
11717 - Bunzl Catering Supplies	7	55			eMail
11665 - Sorin Group UK Ltd	7	49			eMail
10405 - Health Edge Solutions Ltd	7	48			eMail
11083 - Medicina Ltd	7	44			eMail
10699 - Paul Hartmann Ltd	7	42			eMail
13079 - Diagmed Healthcare Ltd	7	40			eMail
10914 - Radiometer Ltd	7	35			eMail
10795 - Mediplus Ltd	7	27			eMail
10700 - Robinson Healthcare Ltd	7	21			eMail
10480 - Beckman Coulter UK Ltd	7	17			eMail
10485 - Pall Medical	7	12			eMail
10531 - Guest Medical Ltd	7	9			eMail
10794 - Medical Wire & Equipment Company	7	9			eMail
10239 - Office Depot (UK) Ltd	6	1085			eLink
10724 - Fresenius Medical Care	6	78			eMail
11612 - Resmed (UK) Ltd	6	44			eMail
11701 - Greiner Bio-One Ltd	6	41			eMail
11236 - GE Medical Systems Information Technology	6	36			eMail
10175 - Allergan Ltd	6	36			eMail
11797 - Corin Medical Ltd	6	32			eMail
13073 - Anetic Aid Ltd	6	29			eMail
11187 - P3 Medical Ltd	6	29			eMail
10965 - Sarstedt Ltd	6	29			eMail
13450 - Vital Signs	6	27			eMail
11822 - Casmed International Ltd	6	25			eMail

**E-TRADING STATISTICS – AUGUST 2009**  
(EXCLUDING PHARMACY)

ORGANISATIONS	T/R	ORD	INV	CNF	TYPE
11905 - Chartrite Ltd	6	22			eMail
11750 - Marshall Products Ltd	6	20			eMail
10260 - Cardinal Health UK 306 Ltd (Alaris)	6	20			eMail
10623 - Midco Print & Packaging Ltd	6	19			eMail
10976 - Spectrum Ophthalmics	6	18			eMail
10871 - Acumed Ltd	6	17			eMail
12107 - Cardinal Health UK 235 Ltd	6	16			eMail
10122 - Convatec Ltd	6	16			eMail
10303 - RL Dolby & Co Ltd	6	15			eMail
10399 - Armstrong Medical Ltd	6	15			eMail
10080 - Bracco UK Ltd	6	13			eMail
10089 - UDG	6	9			eMail
10746 - Datex Ohmeda Ltd	5	55			eMail
10771 - Grahame Gardner Ltd	5	53			eMail
11719 - Business Dictation Ltd	5	45			eMail
11004 - Westfield Medical Ltd	5	41			eMail
13471 - Ev3 Ltd	5	40			eMail
10086 - Bausch & Lomb	5	36			eMail
11756 - GN Resound Ltd	5	34			eMail
10702 - Rusch UK Ltd	5	34			eMail
10091 - Vernon-Carus Ltd	5	29			eMail
10973 - Sigma Aldrich Co Ltd	5	26			eMail
11811 - Pyramed Ltd	5	24			eMail
13293 - Mentor Medical Systems Ltd	5	22			eMail
11548 - Siemens Medical Solutions Diagnostics Europe Ltd	5	22			eMail
10796 - Meltemi Company Clothing Ltd	5	19			eMail
10867 - Nisbets	5	18			eMail
11714 - Vascutek Ltd	5	17			eMail
11805 - MDM Medical Ltd	5	16			eMail
13496 - Laerdal Medical AS	5	15			eMail
12964 - Welch Allyn UK Ltd	5	15			eMail
10088 - Banner Business Supplies Ltd	5	13			eMail
10483 - The Tristel Company Ltd	5	13			eMail
11796 - American Medical Systems (UK) Ltd	5	12			eMail
13082 - DTR Medical Ltd	5	12			eMail

**E-TRADING STATISTICS – AUGUST 2009**  
(EXCLUDING PHARMACY)

ORGANISATIONS	T/R	ORD	INV	CNF	TYPE
10526 - Helapet Ltd	5	12			eMail
11762 - Mobilis Physiotherapy Ltd	5	11			eMail
10961 - UK Laser	4	599			eMail
10553 - Henry Schein Minerva Dental Ltd	4	167			eMail
10760 - Frontier Multigate	4	44			eMail
10062 - Smith & Nephew Healthcare - Wound Management	4	40			eMail
13080 - DJO UK Ltd	4	30			eMail
13519 - Integra Neurosciences Ltd	4	28			eMail
10996 - Vacsax Ltd	4	25			eMail
11159 - Henry Schein Procure	4	25			eMail
10598 - Distinctive Medical Products Ltd	4	23			eMail
11800 - Northstar Orthopaedics Ltd	4	21			eMail
10979 - Sterilox Technologies International Ltd	4	18			eMail
13574 - ERBE Medical UK Ltd	4	15			eMail
12382 - Steris Ltd	4	14			eMail
11723 - Days Healthcare UK Ltd	4	14			eMail
11763 - Pulse Surgical Ltd	4	14			eMail
11808 - Cryolife Europa Ltd	4	11			eMail
11893 - Inspiration Healthcare Ltd	4	10			eMail
10777 - Hollister Ltd	4	10			eMail
10085 - Nutricia Ltd	4	8			eMail
10970 - Seward-Thackray	4	7			eMail
11002 - Wescott Medical Ltd	4	7			eMail
10624 - Lidco Ltd	4	7			eMail
10916 - RB Medical T/A RB Medical Eng	4	7			eMail
13090 - Haag-Streit UK	4	6			eMail
10381 - CliniMed Ltd	4	6			eMail
11478 - Quality Enabling Devices Ltd	4	4			eMail
11026 - NHS Supply Chain (Bridgwater)	3	1236	1149		eLink
11015 - Lyreco UK Ltd	3	740			eMail
11709 - Invacare (UK) Ltd	3	165			eMail
11912 - Newhall Janitorial Ltd	3	95			eMail
13092 - Harlow Printing Ltd	3	50			eMail
13027 - LaserBand LLC	3	47			eMail
10180 - Canonbury Products Ltd	3	33			eMail

**E-TRADING STATISTICS – AUGUST 2009**  
(EXCLUDING PHARMACY)

ORGANISATIONS	T/R	ORD	INV	CNF	TYPE
11569 - Joint Replacement Instrumentation Ltd	3	33			eMail
11801 - Ortho Solutions Ltd	3	28			eMail
10990 - Tomlinson Book Service	3	25			eMail
12955 - All Print	3	17			eMail
10747 - Deb Ltd	3	16			eMail
13502 - Instrumentation Laboratory UK	3	15			eMail
13560 - Maquet Ltd	3	14			eMail
11584 - Ecolab Ltd (Swindon)	3	14			eMail
11496 - Oxylitre Ltd	3	13			eMail
10709 - AMO UK Ltd	3	13			eMail
11775 - BOC Ltd	3	13			eMail
13414 - GBUK Healthcare	3	13			eMail
13533 - Exmoor Plastics Ltd	3	12			eMail
10902 - Nimans Ltd	3	12			eMail
13552 - Medrad UK Ltd	3	10			eMail
10775 - HPC Healthline UK Ltd	3	10			eMail
10261 - Eden Medical UK Limited	3	10			eMail
10474 - Optident (Uk) Ltd	3	9			eMail
13545 - Prospect Diagnostics Ltd	3	9			eMail
13675 - Deltex Medical Ltd Deltex House	3	9			eMail
11755 - B & D Electromedical	3	8			eMail
12302 - Biotronik UK Ltd	3	8			eMail
13646 - Judd Medical Ltd	3	8			eMail
13625 - Synectics Medical Ltd	3	8			eMail
10649 - Bio-Stat Diagnostic Systems	3	8			eMail
10743 - Cuxson Gerrard & Co Ltd	3	7			eMail
10715 - Associated Hospital Supplies	3	7			eMail
10753 - Euro Office Equipment	3	7			eMail
11715 - Owen Mumford Ltd	3	6			eMail
13089 - Greenham Trading Ltd	3	6			eMail
10745 - Datascope	3	6			eMail
10774 - Gyrus International Ltd	3	6			eMail
11000 - Vitalograph Ltd	3	5			eMail
11807 - Pulsion Medical UK Ltd Unit C4 Heathrow Corporate Park	3	5			eMail



**E-TRADING STATISTICS – AUGUST 2009**  
(EXCLUDING PHARMACY)

ORGANISATIONS	T/R	ORD	INV	CNF	TYPE
13077 - Clement Clarke International Ltd	3	4			eMail
10622 - Celfix Labels	3	4			eMail
10401 - E-Z-EM (UK) Ltd	3	4			eMail
13553 - Litechnica Ltd	3	3			eMail
10512 - Claudius Ash	2	65			eMail
11574 - Dental Directory	2	46			eMail
12950 - Unisurge International Ltd	2	45			eMail
11684 - Apatech Ltd	2	34			eMail
11610 - Creed Catering Supplies Ltd	2	28			eMail
10447 - Vitaflo Ltd	2	26			eMail
11675 - Microvention UK Ltd	2	24			eMail
12868 - Hospital Innovations Ltd	2	20			eMail
11688 - DBC Foodservice	2	20			eMail
13068 - Supplies Team	2	18			eLink
13342 - Nipro Europe - UK Branch	2	18			eMail
11237 - Bridgend Office Furniture	2	17			eMail
10977 - Stamps Direct Ltd	2	17			eMail
13680 - Micrus Endovascular UK Ltd Unit 4 Stansted Courtyard	2	16			eMail
11092 - Screwfix Direct	2	16			eMail
10956 - Arrow International UK Ltd	2	15			eMail
11760 - Siemens Hearing Instruments Ltd	2	15			eMail
13439 - Protech Medical Ltd	2	14			eMail
13558 - Siemens Healthcare Diagnostics Ltd	2	14			eMail
13427 - Respirationics (UK) Ltd	2	13			eMail
13074 - Arval UK Ltd	2	13			eMail
10785 - Kelway (UK) Ltd	2	12			eMail
10704 - Swann Morton Ltd	2	10			eMail
13499 - Icom Works Ltd	2	9			eMail
11799 - Haemonetics Ltd	2	9			eMail
13621 - Molton Brown Limited	2	9			eMail
13644 - Lancer UK Ltd	2	9			eMail
13557 - Medical Innovations Ltd	2	8			eMail
13572 - Kingspeed Services	2	8			eMail
12956 - Argos Business Solutions Corporate	2	8			eMail
11634 - GE Healthcare	2	8			eMail

**E-TRADING STATISTICS – AUGUST 2009**  
(EXCLUDING PHARMACY)

ORGANISATIONS	T/R	ORD	INV	CNF	TYPE
11391 - Arco Wessex (East Anglia)	2	8			eMail
11130 - Millipore (Uk) Ltd	2	7			eMail
11667 - Safewear	2	7			eMail
10960 - South Western Surgical Ltd	2	7			eMail
12854 - Lexar Media	2	7			eMail
13592 - Paramount Medical Solutions Ltd	2	7			eMail
12954 - A Algeo Ltd	2	7			eMail
11901 - Temed	2	7			eMail
13664 - Insight Medical Products Ltd	2	7			eMail
13605 - Radi Medical Systems Ltd	2	6			eMail
13556 - Medisafe UK Ltd	2	6			eMail
13527 - Single Use Surgical Ltd	2	6			eMail
12962 - HC Slingsby PLC	2	6			eMail
13587 - Anita UK Ltd	2	6			eMail
13340 - Genta Medical	2	6			eMail
10634 - CME Mckinley Medical UK Ltd	2	6			eMail
10799 - Monosol AF Ltd	2	6			eMail
10285 - Shield Medicare Ltd	2	6			eMail
10275 - Grifols UK Ltd	2	5			eMail
10995 - Uroplasty Ltd	2	5			eMail
13492 - Medicare Colgate Ltd	2	5			eMail
13566 - Cardiac Services UK Ltd	2	5			eMail
13093 - Pearson Education Ltd	2	5			eMail
13505 - Dabs.com	2	5			eMail
13532 - NeuroTherm Ltd	2	5			eMail
13891 - Aspen Medical Thornhill Road	2	5			eMail
11819 - Huntleigh Healthcare (Cardiff) Diagnostic Products					
Division	2	5			eMail
13412 - MGC Lamps Ltd	2	4			eMail
11942 - Sigmacon (UK) Ltd	2	4			eMail
13550 - Core Surgical	2	4			eMail
13494 - Euro Energy Resources Ltd	2	4			eMail
13534 - Hospital Direct (Marketing) Ltd	2	4			eMail
13075 - AW Bent	2	4			eMail
13580 - Biohit Ltd (T/A Pipette Doctor)	2	4			eMail

**E-TRADING STATISTICS – AUGUST 2009**  
(EXCLUDING PHARMACY)

ORGANISATIONS	T/R	ORD	INV	CNF	TYPE
10752 - EMS Medical Group Ltd	2	3			eMail
11049 - Jencons PLS	2	3			eMail
10798 - Mobilis Podiatry Ltd	2	3			eMail
11503 - Medical Access Ltd	2	3			eMail
11754 - Kavo Dental Ltd	2	3			eMail
11745 - Bayer PLC	2	3			eMail
13554 - Media Resources	2	3			eMail
12298 - Peskett Solutions Ltd	2	3			eMail
13294 - Sterilin Ltd	2	3			eMail
13503 - Sysmex UK Ltd	2	3			eMail
13546 - Speciality Labels	2	3			eMail
12852 - Fenwal UK Ltd	2	2	1		eLink
11759 - SFA Medical	2	2			eMail
13586 - New Splint Ltd	2	2			eMail
13410 - Bio Diagnostics Ltd	2	2			eMail
12864 - JLA Ltd	2	2			eMail
13617 - Protec Medical Ltd	2	2			eMail
13595 - Vertec Scientific Ltd	2	2			eMail
11530 - Full Support Healthcare Ltd	2	2			eMail
11172 - Amercare Ltd	2	2			eMail
10276 - Guerbet Laboratories Ltd	2	2			eMail
10278 - Maco Pharma UK Ltd	2	2			eMail
10268 - Axis-Shield Diagnostics Ltd	2	2			eMail
10198 - Oticon Ltd	2	2			eMail
11673 - Allens Printers and Stationers Ltd	1	160			eMail
11178 - WR Bishop	1	137			eMail
11081 - Moreton Hall Press Ltd	1	94			eMail
10959 - Farmer Johns Dark Grove Farm Ltd	1	86			eMail
10255 - Fast-Aid Products Ltd	1	75			eMail
13449 - Impact Office Equipment	1	75			eMail
11613 - Alexandra Plc (Scotland)	1	67			eMail
11072 - John Sheppard Butchers	1	58			eMail
13032 - Stone Computers Ltd	1	53			eMail
12963 - Set (Office Supplies) Ltd	1	44			eMail
13979 - Santana Hardware Ltd	1	43			eMail

## E-TRADING STATISTICS – AUGUST 2009 (EXCLUDING PHARMACY)

ORGANISATIONS	T/R	ORD	INV	CNF	TYPE
12958 - Comcen Computer Supplies Ltd	1	30			eMail
11696 - NHS Supply Chain (Maidstone)	1	29			eLink
13031 - Computerworld (Wales) Ltd	1	28			eMail
11711 - NH Case Ltd	1	27			eMail
13513 - Health Care Services	1	25			eMail
13549 - Microtek Ltd	1	24			eMail
11080 - Boyd Cooper Dimensions Ltd	1	24			eMail
13548 - K-Med	1	23			eMail
11818 - Medichem International (Marketing) Ltd	1	22			eMail
10529 - Nestle Clinical Nutrition	1	22			eMail
12393 - Ellis Eggs	1	21			eMail
11694 - NHS Supply Chain (Runcorn)	1	20			eLink
13910 - Pads Printing & Stationary Limited	1	19			eMail
10703 - Shermond	1	18			eMail
11703 - Key Catering Plc	1	17			eMail
13441 - R & L Slaughter Ltd	1	17			eMail
13370 - Allens Office Ltd	1	16			eMail
11672 - Gerald Simonds Healthcare Ltd	1	15			eMail
11079 - Computing Needs Ltd	1	14			eMail
13368 - JohnsonDiversey UK Ltd	1	13			eMail
12856 - Blackwell University Bookshop	1	13			eMail
13578 - Ortho Care (UK) Ltd	1	12			eMail
13618 - Simon Jersey Ltd	1	12			eMail
13645 - Uniforms for Work Ltd	1	12			eMail
12959 - Dell Computer Corporation Ltd	1	11			eMail
13514 - Applera UK T/A Applied Biosystems	1	11			eMail
13530 - Hygiene Systems Ltd	1	10			eMail
10690 - B M Polyco Ltd	1	9			eMail
11932 - Browning Jones & Morris Ltd	1	9			eMail
13598 - Osteotec Ltd	1	9			eMail
13590 - Lawmed Ltd	1	8			eMail
11689 - Highway & Industrial Equipment Ltd	1	8			eMail
13445 - Solmedia Ltd	1	8			eMail
11933 - Cardiff Lock & Safe Co Ltd	1	8			eMail
10066 - Phoenix Healthcare Distribution Ltd	1	8		8	eMail

## E-TRADING STATISTICS – AUGUST 2009 (EXCLUDING PHARMACY)

ORGANISATIONS	T/R	ORD	INV	CNF	TYPE
11660 - R82 UK Ltd	1	7			eMail
13072 - Amberwell Engineering Services	1	7			eMail
12876 - Kent Express Ltd	1	7			eMail
13528 - Alliance Disposables	1	7			eMail
13584 - Medicell Ltd	1	7			eMail
11705 - Independent Catering Supplies	1	7			eMail
13607 - Cochlear Europe Ltd	1	6			eMail
13683 - Imperial Hygiene Services Limited	1	6			eMail
12394 - PM Labels	1	6			eMail
13083 - European Electronique	1	6			eMail
13145 - Pasta King UK Ltd.	1	6			eMail
11720 - Orange PCS Ltd	1	6			eMail
11804 - Ash Medical Ltd	1	6			eMail
11226 - Stericom Ltd	1	6			eMail
10733 - Camcare Gels	1	6			eMail
13944 - Misco Computer Supplies	1	6			eMail
13434 - Alpha Laboratories	1	5			eMail
13435 - Anachem Ltd	1	5			eMail
13564 - Medisco Medical Systems	1	5			eMail
13612 - Spacelabs Healthcare Ltd	1	5			eMail
13536 - Hospital General Supplies	1	4			eMail
13541 - Intuitive Surgical Sarl	1	4			eMail
13529 - AngioDynamics	1	4			eMail
13457 - Launch & Biokit	1	4			eMail
13588 - Movianto UK Ltd	1	4			eMail
13544 - Cool Technic Ltd	1	4			eMail
13650 - OPT Complete Print Solutions Ltd	1	4			eMail
11133 - Pentland Medical Ltd	1	4			eMail
10728 - BMS Critical Care Ltd.	1	4			eMail
10759 - 365 Healthcare	1	4			eMail
10481 - Medex Medical Ltd	1	4			eMail
13687 - Surgical Instruments Group Holdings Ltd	1	3			eMail
13579 - Technology in Motion	1	3			eMail
13637 - Monmouth Surgical Ltd	1	3			eMail
13828 - The Binding Site Limited	1	3			eMail

## E-TRADING STATISTICS – AUGUST 2009 (EXCLUDING PHARMACY)

ORGANISATIONS	T/R	ORD	INV	CNF	TYPE
12965 - Winslow Rompa (UK) Ltd	1	3			eMail
11934 - Total Filtration Ltd	1	3			eMail
12297 - Bio Products Laboratory	1	3			eMail
11930 - Talbot-Owen Tools & Fasteners Ltd	1	3			eMail
13407 - Abbott Vascular	1	3			eMail
13442 - Mast Group Ltd	1	3			eMail
13437 - Phadia Ltd	1	3			eMail
13630 - Malosa Medical	1	3			eMail
13634 - Altrax Group Limited	1	3			eMail
13731 - Leica Microsystems (UK) Ltd	1	3			eMail
13774 - Mailbox Mouldings International Ltd	1	2			eMail
13813 - Cardinal Health 240 Ltd	1	2			eMail
13638 - Advanced Surgical Ltd	1	2			eMail
11821 - Quadrant Medical Ltd	1	2			eMail
13868 - D-Line (UK) Ltd	1	2			eMail
13436 - Bio-Rad Laboratories	1	2			eMail
13443 - Microbiological Supply Co	1	2			eMail
13315 - Easicook Microwave Ltd	1	2			eMail
13316 - Travis Perkins	1	2			eMail
13160 - Machine Mart Ltd	1	2			eMail
13087 - Glen Dimplex Home Appliance	1	2			eMail
12108 - Pats Labels Ltd	1	2			eMail
11972 - GE Healthcare Accessories & Supplies Coolidge House	1	2			eMail
13535 - Medical Devices Ltd	1	2			eMail
13537 - Bunzl Cleaning and Hygiene Supplies	1	2			eMail
13540 - W.K.Thomas & Co Ltd	1	2			eMail
13501 - Clinical Innovations Europe	1	2			eMail
13200 - Diagnostic Sonar Ltd	1	2			eMail
11814 - Caridian BCT Europe NV	1	2			eMail
13078 - Design Stage Ltd	1	2			eMail
13993 - WL Gore & Associates (UK) Ltd Heatherpark	1	2			eMail
13670 - Thamesmead Business Services	1	2			eMail
13818 - Prontaprint	1	2			eMail
13821 - Karl Storz Endoscopy (UK) Ltd (Repairs)	1	2			eMail
13779 - Maplin Electronics Ltd Brookfields Way	1	2			eMail

## E-TRADING STATISTICS – AUGUST 2009 (EXCLUDING PHARMACY)

ORGANISATIONS	T/R	ORD	INV	CNF	TYPE
13832 - Cardinal Health UK 232 Ltd	1	2			eMail
11761 - Richard Wolf UK Ltd	1	2			eMail
11505 - Technoclone Ltd	1	2			eMail
11176 - Sartorius Ltd	1	2			eMail
11093 - LH Evans	1	2			eMail
10736 - Cape Warwick Ltd	1	2			eMail
10712 - Arco Wessex (Ossett)	1	2			eMail
10912 - Profile Respiratory System Ltd	1	2			eMail
10947 - Quantum Diagnostics Ltd	1	2			eMail
11551 - Q-Med (UK) Ltd	1	2			eMail
11570 - Colin Robinson Printers Ltd	1	2			eMail
10188 - Merck Pharmaceuticals	1	2			eMail
10204 - Healthcare Logistics	1	2			eMail
10559 - Medipost (UK) Ltd	1	2			eMail
10561 - Dentoid Ltd	1	2			eMail
10068 - Bristol Myers Squibb Pharma Ltd	1	2			eMail
13667 - Gailarde Ltd	1	2			eMail
14008 - Covidien (Contracts Division)	1	2			eMail
13812 - Medical Imaging Systems Limited	1	2			eMail
10241 - GHX UK Ltd. (other)	1	1			eMail
10052 - Bayer Schering Pharma	1	1			eMail
11144 - Inverness Medical UK	1	1			eMail
10967 - Seca Ltd	1	1			eMail
10981 - Surgicraft Ltd	1	1			eMail
10677 - Imotek International Ltd	1	1			eMail
10316 - Cambridge Laboratories Ltd	1	1			eMail
10787 - Kestrel Ophthalmics Ltd	1	1			eMail
10963 - Sallis Ltd	1	1			eMail
10969 - Sentinel Laboratories Ltd	1	1			eMail
10994 - Univar Ltd (Wales)	1	1			eMail
10919 - Reed Shilling	1	1			eMail
10920 - Remploy Healthcare	1	1			eMail
11129 - M & A Pharmachem Ltd	1	1			eMail
11609 - Bristol Scale Service Company	1	1			eMail
11832 - Channel Time	1	1			eMail

## E-TRADING STATISTICS – AUGUST 2009

(EXCLUDING PHARMACY)

ORGANISATIONS	T/R	ORD	INV	CNF	TYPE
11706 - Micronclean (Newbury) Ltd	1	1			eMail
11685 - Chas Blatchford & Sons	1	1			eMail
13613 - Hill-Rom UK	1	1			eMail
13615 - Jade Medical Ltd	1	1			eMail
13616 - Thomas Kneale & Co. Ltd	1	1			eMail
13619 - James Spencer & Co Ltd	1	1			eMail
13575 - Carleton Optical Ltd	1	1			eMail
13576 - Acclarent Inc Healthlink Europe	1	1			eMail
13691 - Medical Graphics (UK) Ltd Unit 9 Clifton Centre	1	1			eMail
13694 - Air Liquide UK Ltd Station Road	1	1			eMail
13716 - BrainLAB Ltd Regus House	1	1			eMail
13722 - Thamert (UK) Ltd 20 Wildmere Road	1	1			eMail
13739 - Enviroscreen Systems	1	1			eMail
13751 - Applied Medical UK Ltd	1	1			eMail
13651 - Tomlinsons	1	1			eMail
13652 - Vitech Scientific Ltd	1	1			eMail
13657 - Sandhill Scientific UK Ltd	1	1			eMail
13663 - John Bell & Croyden	1	1			eMail
13668 - Cambridge Diagnostics Services Ltd	1	1			eMail
13851 - Bioconnections Unit 422D	1	1			eMail
13858 - Joseph Alan Limited	1	1			eMail
13870 - Bell-Chem Products Company	1	1			eMail
13884 - Sakura Finetek UK Ltd 1 Thatcham Business Village	1	1			eMail
13908 - Advanced Sterilization Products Johnson and Johnson	1	1			eMail
13911 - Hemotion (UK) Ltd	1	1			eMail
13929 - Docklands Waste Recycling Limited	1	1			eMail
13780 - PFM Medical UK Ltd	1	1			eMail
13788 - Microlab Technologies Ltd Crucible House	1	1			eMail
13802 - Otsuka Pharmaceuticals UK Ltd	1	1			eMail
13804 - Labcold Ltd	1	1			eMail
13116 - Cardiacare Ltd	1	1			eMail
13071 - Ace Feet In Motion Ltd	1	1			eMail
12957 - Boucon Network Solutions Ltd	1	1			eMail
12961 - Paper House Plus Ltd	1	1			eMail
11884 - Kingfisher Pest Control	1	1			eMail



## E-TRADING STATISTICS – AUGUST 2009

(EXCLUDING PHARMACY)

ORGANISATIONS	T/R	ORD	INV	CNF	TYPE
13470 - A Menarini Diagnostics UK Ltd	1	1			eMail
13448 - Trinity Biotech UK Sales Ltd ( )	1	1			eMail
13559 - Penlon Ltd	1	1			eMail
12916 - Inverness Medical UK Ltd	1	1			eMail
13091 - Halo Healthcare Ltd	1	1			eMail
13277 - Valley Northern Ltd	1	1			eMail
13438 - Pro-lab Diagnostics	1	1			eMail
13451 - Sebia UK Ltd	1	1			eMail
13493 - Charles River Laboratories	1	1			eMail
13573 - Melyd Medical Ltd	1	1			eMail
13581 - Gelpack Excelsior Ltd	1	1			eMail
13543 - ADC Fire Systems	1	1			eMail
13538 - Wise Worksafe	1	1			eMail
13672 - SKF Services Ltd	1	1			eMail
11813 - Orthodynamics	1	1			eMail
11810 - Sonosite Ltd	1	1			eMail
13629 - Howard Warwick Associates Ltd	1	1			eMail
13648 - Delta Surgical Ltd	1	1			eMail
13649 - Olympic Print & Design	1	1			eMail
13653 - Purite Ltd	1	1			eMail
13601 - Thomas Fattorini Ltd	1	1			eMail
13591 - Candela (UK) Ltd	1	1			eMail
13593 - Kelgray Products Ltd	1	1			eMail
13597 - Marlux Medical Limited	1	1			eMail
13815 - EMS Physio Ltd Grove Technology Park	1	1			eMail
13816 - Blow UK Multimedia Ltd	1	1			eMail
13849 - Park House Healthcare Ltd	1	1			eMail
13855 - Albert Waeschle Ltd 11 Balena Close	1	1			eMail
13897 - KeyMed (Repairs) KeyMed House	1	1			eMail
13898 - Body Clock Health Care Limited 108 George Lane	1	1			eMail
13900 - BK Medical (UK) Ltd	1	1			eMail
13933 - Frobishers Alphinbrook House	1	1			eMail
13789 - Summerside Computers 100 - 102 Marsh Lane	1	1			eMail
13791 - York Medical Technologies Ltd Unit 12, Brookfield Business Park	1	1			eMail

**E-TRADING STATISTICS – AUGUST 2009**  
(EXCLUDING PHARMACY)

ORGANISATIONS	T/R	ORD	INV	CNF	TYPE
13794 - Elemental Healthcare Ltd Shefford Park Farm	1	1			eMail
13755 - Jermyn Street Design	1	1			eMail
13763 - Advantech Surgical	1	1			eMail
11215 - Wader Labelling Systems Ltd 26	1	1			eMail
13610 - Calumet Photographic	1	1			eMail
13750 - Keeler Ltd	1	1			eMail
13943 - Posturite Ltd	1	1			eMail
14013 - Melville Data Services Data House	1	1			eMail
14029 - Platon Medical Ltd	1	1			eMail
14034 - Decon Sciences Ltd	1	1			eMail
14042 - The Acrobot Company Limited	1	1			eMail
13829 - Dawmed International Ltd	1	1			eMail
13447 - Sterilab Services (UK)	1	1			eMail
13992 - Cardiologic Ltd Hillside House	1	1			eMail
14004 - PTW-UK Ltd Springfield House	1	1			eMail
14007 - LIDCO Limited 16 Orsman Road	1	1			eMail
14015 - Plinth 2000 Limited Wetheringsett Manor	1	1			eMail
14030 - Pentax UK Limited ( )	1	1			eMail
14035 - Next Control Systems Ltd	1	1			eMail
13732 - M · I · S · S Ophthalmics Ltd Unit 3, Ryder Court	1	1			eMail

## E-TRADING STATISTICS – AUGUST 2009 (EXCLUDING PHARMACY)

### ACTIVE BUYING ORGANISATIONS

*See the notes at the end of this document, for an explanation of what the values represent.*

ORGANISATIONS	T/R	ORD	INV	CNF	TYPE
The London Clinic (other)	264	1510		112	Meditech
Cardiff and Vale NHS Trust University Hospital of Wales (oracle)	199	5774	1501	539	Oracle
Leeds Teaching Hospitals NHS Trust St. James`s University Hospital (oracle)	174	1860	135	326	Oracle
HCA International Ltd (other)	164	3547	218	404	Meditech
Gwent Healthcare NHS Trust Llanfrecfa Grange Hospital (oracle)	162	1980		54	Oracle
Abertawe Bro Morgannwg University NHS Trust Trust HQ (oracle)	138	1734	90	179	Oracle
Blackpool, Fylde & Wyre Hospitals NHS Foundation Trust Blackpool Victoria Hospital (powergate)	124	752		212	PowerGate
North Bristol NHS Trust Trust Headquarters (eros)	106	839		73	EROS
University Hospitals Bristol NHS Foundation Trust Trust Headquarters (eros)	101	1001		84	EROS
The Ipswich Hospital NHS Trust (eros)	100	753		53	EROS
Welsh Health Supplies Central Stores (oracle)	97	769	1	49	Oracle
Nottingham University Hospitals NHS Trust Queens Medical Centre (powergate)	89	1022		211	PowerGate
James Paget University Hospitals NHS Foundation Trust James Paget Hospital (powergate)	79	259		12	PowerGate
The Queen Elizabeth Hospital King's Lynn NHS Trust Queen Elizabeth Hospital (powergate)	70	415		39	PowerGate
Fife Healthcare Supplies (powergate)	66	980		170	PowerGate
Cumbria NHS Procurement Services Cumberland Infirmary (powergate)	65	342		37	PowerGate
Weston Area Health NHS Trust Weston General Hospital (eros)	65	294		25	EROS
Heart of England NHS Foundation Trust Birmingham Heartlands Hospital (oracle)	63	713		185	Oracle
Bupa Cromwell Hospital (powergate)	52	175		34	PowerGate
West Suffolk Hospitals NHS Trust West Suffolk Hospital (powergate)	50	139		8	PowerGate
Western Sussex Hospitals NHS Trust Southlands Hospital (powergate)	41	304		28	PowerGate
Norfolk & Norwich University Hospital NHS Trust Norfolk & Norwich University Hospital (powergate)	36	697		86	PowerGate
Royal Bournemouth & Christchurch Hosp NHS Found Trust The Royal Bournemouth Hospital (powergate)	32	679	96	138	PowerGate
Frimley Park Hospital NHS Foundation Trust Frimley Park Hospital (eros)	27	330		120	EROS
Sherwood Forest Hospitals NHS Trust Kings Mill Hospital (powergate)	14	44		14	PowerGate
Oxford Radcliffe Hospitals NHS Trust John Radcliffe Hospital (oracle)	10	492		191	Oracle
Barts and The London NHS Trust Trust Offices, Whitechapel (uk procure)	10	268		128	Ukprocure
Bristol PCT South Plaza (eros)	9	35			EROS
North Somerset PCT Waverley House (eros)	9	15			EROS
NHS Supply Chain (Normanton) (distributor)	8	2477		1717	Distributor
Lancashire Teaching Hospitals NHS Foundation Trust Chorley & South Ribble District General Hospital (integra)	7	164		50	Integra
South Gloucestershire PCT 1 Monarch Court, (eros)	7	15			EROS

## E-TRADING STATISTICS – AUGUST 2009 (EXCLUDING PHARMACY)

ORGANISATIONS	T/R	ORD	INV	CNF	TYPE
South Tees Hospitals NHS Trust James Cook University Hospital (eros)	6	295		234	EROS
County Durham & Darlington NHS Foundation Trust University Hospital of North Durham (eros)	6	170		116	EROS
Royal Surrey County Hospital NHS Trust Royal Surrey County Hospital (uk procure)	6	106		79	Ukprocure
North Tees and Hartlepool NHS Foundation Trust University Hospital of Hartlepool (eros)	6	92		92	EROS
AAH Hospital Service (Coventry) (distributor)	5	384			Distributor
Plymouth Hospitals NHS Trust Derriford Hospital (sbs)	4	169		51	SBS
North Bristol NHS Trust Frenchay Hospital (e-direct)	4	27		11	NHSSC
Bunzl Healthcare Ltd (distributor)	3	175		126	Distributor
Alliance Healthcare (Distribution) Ltd. (distributor)	3	93			Distributor
County Durham & Darlington NHS Foundation Trust Darlington Memorial Hospital (e-direct)	3	82		62	NHSSC
Hull and East Yorkshire Hospitals NHS Trust Hull Royal Infirmary (e-direct)	3	35		2	NHSSC
South Tees Hospitals NHS Trust James Cook University Hospital (e-direct)	3	30			NHSSC
The Newcastle Upon Tyne Hospitals NHS Foundation Trust Freeman Hospital (e-direct)	3	28			NHSSC
University Hospital Coventry and Warwickshire NHS Trust Walsgrave General Hospital (e-direct)	3	28			NHSSC
Doncaster & Bassetlaw Hospitals NHS Trust Doncaster Royal Infirmary (e-direct)	3	24		17	NHSSC
Portsmouth Hospitals NHS Trust De La Court House, Queen Alexandra Hospital (e-direct)	3	20			NHSSC
Darlington PCT Dr Piper House (eros)	3	19		8	EROS
North Cumbria Acute Hospitals NHS Trust West Cumberland Hospital (e-direct)	3	11		3	NHSSC
Isle Of Wight NHS PCT St. Marys Hospital (e-direct)	3	10			NHSSC
United Bristol Healthcare NHS Trust (e-direct)	3	10			NHSSC
Calderdale & Huddersfield NHS Trust Royal Infirmary (e-direct)	3	8			NHSSC
The Shrewsbury and Telford Hospital NHS Trust (e-direct)	3	7			NHSSC
Yeovil District Hospital NHS Foundation Trust Yeovil District Hospital (e-direct)	3	3			NHSSC
Tees, Esk & Wear Valleys NHS Trust (eros)	3	3			EROS
Cardiff and Vale NHS Trust University Hospital of Wales (e-direct)	2	131		126	NHSSC
Barts and The London NHS Trust Trust Offices, Whitechapel (e-direct)	2	35			NHSSC
Gloucestershire Hospitals NHS Foundation Trust Trust HQ (e-direct)	2	31			NHSSC
Central Manchester & Manchester Childrens University Hospita Trust Headquarters, Cobbett House (e-direct)	2	29			NHSSC
University Hospital Birmingham NHS Foundation Trust Trust HQ, PO Box 9551, Queen Elizabeth Medical Centre (e-direct)	2	28			NHSSC
Royal Liverpool & Broadgreen University Hospitals NHS Trust Royal Liverpool University Hospital (e-direct)	2	26		22	NHSSC
Highland NHS Board Assynt House (pecos)	2	25			PECOS
Barnet and Chase Farm Hospitals NHS Trust Barnet General Hospital (e-direct)	2	24			NHSSC

## E-TRADING STATISTICS – AUGUST 2009 (EXCLUDING PHARMACY)

ORGANISATIONS	T/R	ORD	INV	CNF	TYPE
Ashford and St Peter's Hospitals NHS Trust St Peters Hospital (powergate)	2	22			PowerGate
Birmingham Children's Hospital NHS Trust (e-direct)	2	22			NHSSC
Southampton University Hospitals NHS Trust Southampton General Hospital (e-direct)	2	22			NHSSC
United Lincolnshire Hospitals NHS Trust Lincoln County Hospital (e-direct)	2	22			NHSSC
University Hospital Of South Manchester NHS Trust Wythenshawe Hospital (e-direct)	2	22			NHSSC
Brighton & Sussex University Hospitals NHS Trust Royal Sussex County Hospital (e-direct)	2	21			NHSSC
Plymouth Hospitals NHS Trust Derriford Hospital (e-direct)	2	20			NHSSC
Basildon & Thurrock University Hospital NHS Trust Basildon Hospital (e-direct)	2	19			NHSSC
West Suffolk Hospitals NHS Trust (e-direct)	2	19			NHSSC
Wirral University Teaching Hospital NHS Foundation Trust Arrowe Park Hospital (e-direct)	2	18			NHSSC
Queen Victoria Hospital NHS Foundation Trust (e-direct)	2	17			NHSSC
Royal Devon and Exeter NHS Foundation Trust Royal Devon and Exeter Hospital (e-direct)	2	17			NHSSC
North Staffordshire Combined Healthcare NHS Trust Bucknall Hospital (e-direct)	2	16			NHSSC
Sheffield Teaching Hospitals NHS Foundation Trust Northern General Hospital (e-direct)	2	16			NHSSC
North Tees and Hartlepool NHS Foundation Trust University Hospital Of Hartlepool (e-direct)	2	15			NHSSC
Peterborough and Stamford Hospitals NHS Foundation Trust Edith Cavell Hospital (e-direct)	2	15			NHSSC
Barking, Havering and Redbridge Hospitals NHS Trust Queens Hospital (e-direct)	2	13			NHSSC
Newham University Hospital NHS Trust Newham General Hospital (e-direct)	2	13			NHSSC
Oxford Radcliffe Hospitals NHS Trust John Radcliffe Hospital (e-direct)	2	13			NHSSC
Pennine Acute Hospitals NHS Trust Trust Headquarters, North Manchester General Hospital (e-direct)	2	13			NHSSC
The Royal Bournemouth & Christchurch Hospitals NHS Trust Royal Bournemouth General Hospital (e-direct)	2	13			NHSSC
Great Ormond Street Hospital NHS Trust (e-direct)	2	12			NHSSC
King's College Hospital NHS Foundation Trust (e-direct)	2	12			NHSSC
The Royal Wolverhampton Hospitals NHS Trust New Cross Hospital (e-direct)	2	12			NHSSC
University Hospitals Of Morecambe Bay NHS Trust Westmorland General Hospital (e-direct)	2	12			NHSSC
East Sussex Hospitals NHS Trust St. Annes House (e-direct)	2	11			NHSSC
Worcestershire Acute Hospitals NHS Trust Worcestershire Royal Hospital (e-direct)	2	11			NHSSC
Alder Hey Children's NHS Foundation Trust Alder Hey Hospital (e-direct)	2	10			NHSSC
City Hospitals Sunderland NHS Foundation Trust Sunderland Royal Hospital (e-direct)	2	10			NHSSC
Basingstoke and North Hampshire NHS Foundation Trust (e-direct)	2	9			NHSSC

## E-TRADING STATISTICS – AUGUST 2009

(EXCLUDING PHARMACY)

ORGANISATIONS	T/R	ORD	INV	CNF	TYPE
Bedford Hospitals NHS Trust South Wing (e-direct)	2	9			NHSSC
East Kent Hospitals NHS Trust Kent and Canterbury Hospital (e-direct)	2	9			NHSSC
Essex Rivers Healthcare NHS Trust Colchester District General Hospital (e-direct)	2	9			NHSSC
Lancashire Teaching Hospitals NHS Foundation Trust Royal Preston Hospital (e-direct)	2	9			NHSSC
Leeds Teaching Hospitals NHS Trust St. James's University Hospital (e-direct)	2	9			NHSSC
Royal West Sussex NHS Trust St Richard's Hospital (e-direct)	2	9			NHSSC
Salford Royal NHS Foundation Trust Salford Royal (e-direct)	2	9			NHSSC
Southend University Hospital NHS Foundation Trust Southend Hospital (e-direct)	2	9			NHSSC
University Hospitals of Leicester NHS Trust Gwendolen House (e-direct)	2	9			NHSSC
Winchester and Eastleigh Healthcare NHS Trust Royal Hampshire County Hospital (e-direct)	2	9			NHSSC
Buckinghamshire Hospitals NHS Trust Amersham Hospital (e-direct)	2	8			NHSSC
Heatherwood & Wexham Park Hospitals NHS Foundation Trust Wexham Park Hospital (e-direct)	2	8			NHSSC
Homerton University Hospital NHS Foundation Trust (e-direct)	2	8			NHSSC
Kettering General Hospital NHS Trust (e-direct)	2	8			NHSSC
Surrey and Sussex Healthcare NHS Trust East Surrey Hospital (e-direct)	2	8			NHSSC
The Princess Alexandra Hospital NHS Trust (e-direct)	2	8			NHSSC
University College London Hospitals NHS Trust (e-direct)	2	8			NHSSC
Cambridge University Hospitals NHS Foundation Trust Addenbrookes Hospital (e-direct)	2	7			Oracle
Bolton Hospitals NHS Trust The Royal Bolton Hospital (e-direct)	2	7			NHSSC
Epsom and St Helier University Hospitals NHS Trust St Helier Hospital (e-direct)	2	7			NHSSC
Maidstone and Tunbridge Wells NHS Trust Maidstone Hospital (e-direct)	2	7			NHSSC
Northern Lincolnshire & Goole Hospitals NHS Trust Diana Princess Of Wales Hospital (e-direct)	2	7			NHSSC
Royal Cornwall Hospitals NHS Trust Royal Cornwall Hospital (e-direct)	2	7			NHSSC
Royal Surrey County Hospital NHS Trust (e-direct)	2	7			NHSSC
Tameside Hospital NHS Foundation Trust Tameside General Hospital (e-direct)	2	7			NHSSC
The Whittington Hospital NHS Trust The Whittington Hospital (e-direct)	2	7			NHSSC
Central Manchester University Hospitals NHS Foundation Trust Manchester Royal Infirmary Hospital (oracle nep)	2	6		4	Oracle NEP
Dorset County Hospital NHS Foundation Trust Dorset County Hospital (e-direct)	2	6			NHSSC
Guys and St Thomas NHS Foundation Trust Trust Offices (e-direct)	2	6			NHSSC
Medway NHS Trust Medway Maritime Hospital (e-direct)	2	6			NHSSC
Taunton and Somerset NHS Trust Musgrove Park Hospital (e-direct)	2	6			NHSSC
Care UK Connaught House (e-direct)	2	5			NHSSC
Christie Hospital NHS Foundation Trust (e-direct)	2	5			NHSSC
Eastern and Coastal Kent PCT Brook House (e-direct)	2	5			NHSSC
Heart of England NHS Foundation Trust Birmingham Heartlands Hospital (e-	2	5			NHSSC

## E-TRADING STATISTICS – AUGUST 2009 (EXCLUDING PHARMACY)

ORGANISATIONS	T/R	ORD	INV	CNF	TYPE
direct)					
Mid Essex Hospital Services NHS Trust Broomfield Hospital (e-direct)	2	5			NHSSC
Northumbria Healthcare NHS Trust (e-direct)	2	5			NHSSC
Papworth Hospital NHS Foundation Trust Papworth Hospital (e-direct)	2	5			NHSSC
The North West London Hospitals NHS Trust Northwick Park Hospital (e-direct)	2	5			NHSSC
Walsall Hospitals NHS Trust Manor Hospital (e-direct)	2	5			NHSSC
Abbey Carrick Glen Hospital (e-direct)	2	4			NHSSC
Derby Hospitals NHS Foundation Trust Derby City General Hospital (e-direct)	2	4			NHSSC
Imperial College Healthcare NHS Trust St. Marys Hospital (e-direct)	2	4			NHSSC
Rotherham NHS Foundation Trust Rivelin House (e-direct)	2	4			NHSSC
South Devon Healthcare NHS Trust Hengrave House, Torbay Hospital (e-direct)	2	4			NHSSC
Swindon and Marlborough NHS Trust Great Western Hospital (e-direct)	2	4			NHSSC
The Mid Cheshire Hospitals NHS Trust Leighton Hospital (e-direct)	2	4			NHSSC
Devon PCT County Hall (sbs)	2	3		2	SBS
Aintree University Hospitals NHS Foundation Trust University Hospital Aintree (e-direct)	2	3			NHSSC
Bromley Hospitals NHS Trust The Princess Royal University (e-direct)	2	3			NHSSC
Devon PCT County Hall (e-direct)	2	3			NHSSC
East Cheshire NHS Trust Macclesfield District Gen Hospital (e-direct)	2	3			NHSSC
Frimley Park Hospital NHS Foundation Trust Frimley Park Hospital (e-direct)	2	3			NHSSC
Northern Devon Healthcare NHS Trust North Devon District Hospital (e-direct)	2	3			NHSSC
Queen Mary's Sidcup NHS Trust Queen Mary's Hospital (e-direct)	2	3			NHSSC
The Royal Orthopaedic Hospital NHS Trust The Woodlands (e-direct)	2	3			NHSSC
Trafford Healthcare NHS Trust Trafford General Hospital (e-direct)	2	3			NHSSC
Cornwall and Isles Of Scilly PCT Sedgemoor Centre (e-direct)	2	2			NHSSC
Liverpool Heart and Chest Hospital NHS Trust (e-direct)	2	2			NHSSC
Sherwood Forest Hospitals NHS Trust (e-direct)	2	2			NHSSC
The Birkdale Clinic (Rotherham) (e-direct)	2	2			NHSSC
Mayday Healthcare NHS Trust Main Store (powergate)	1	455			PowerGate
Surrey and Borders Partnership NHS Trust (powergate)	1	363			PowerGate
Squadron Medical (distributor)	1	82			Distributor
UCLH UCLH Trust Headquarters (adb)	1	66			ADB
Dudley Group Of Hospitals NHS Trust Russells Hall Hospital (powergate)	1	61			PowerGate
Tayside NHS Ninewells Hospital and Med School, Level 9 (pecos)	1	51			PECOS
Gwent Healthcare NHS Trust (e-direct)	1	38			NHSSC
Sangers (NI) Ltd (distributor)	1	27			Distributor
Mid Yorkshire Hospitals NHS Trust Rowan House (e-direct)	1	19			NHSSC
Lancashire Care NHS Foundation Trust Sceptre Point (e-direct)	1	13			NHSSC
Western Sussex Hospitals NHS Trust Worthing Hospital (e-direct)	1	12			NHSSC
South Tyneside NHS Foundation Trust South Tyneside District Hospital (e-direct)	1	11			NHSSC
Chelsea & Westminster Healthcare NHS Trust Chelsea & Westminster Hospital	1	9			NHSSC



## E-TRADING STATISTICS – AUGUST 2009 (EXCLUDING PHARMACY)

ORGANISATIONS	T/R	ORD	INV	CNF	TYPE
(e-direct)					
East Lancashire Hospitals NHS Trust Royal Blackburn Hospital (e-direct)	1	9			NHSSC
Salisbury NHS Foundation Trust Salisbury District Hospital (e-direct)	1	9			NHSSC
The Hillingdon Hospital NHS Trust (e-direct)	1	9			NHSSC
Whipps Cross University Hospital NHS Trust Whipps Cross Hospital (e-direct)	1	9			NHSSC
Mid Staffordshire General Hospitals NHS Trust Staffordshire General Hospital (e-direct)	1	8			NHSSC
Luton and Dunstable Hospital NHS Foundation Trust (e-direct)	1	7			NHSSC
North East Wales NHS Trust Maelor General Hospital (e-direct)	1	7		7	NHSSC
West Hertfordshire Hospitals NHS Trust Hemel Hempstead General Hospital, Trust Offices (e-direct)	1	7			NHSSC
Hereford Hospitals NHS Trust County Hospital (e-direct)	1	6			NHSSC
Northampton General Hospital NHS Trust Cliftonville (e-direct)	1	6			NHSSC
Wrightington, Wigan and Leigh NHS Foundation Trust Royal Albert Edward Infirmary (e-direct)	1	6			NHSSC
Dudley Group Of Hospitals NHS Trust C Block (e-direct)	1	5			NHSSC
East and North Hertfordshire NHS Trust Lister Hospital (e-direct)	1	5			NHSSC
James Paget University Hospitals NHS Foundation Trust (e-direct)	1	5			NHSSC
Royal Free Hampstead NHS Trust Royal Free Hospital (e-direct)	1	5			NHSSC
Burton Hospitals NHS Trust Queen's Hospital (e-direct)	1	4			NHSSC
Southport & Ormskirk NHS Trust (e-direct)	1	4			NHSSC
Airedale NHS Trust Airedale General Hospital (e-direct)	1	3			NHSSC
Ealing Hospital NHS Trust Ealing Hospital (e-direct)	1	3			NHSSC
Scarborough & North East Yorkshire Health Care NHS Trust Scarborough General Hospital (e-direct)	1	3			NHSSC
St Helens and Knowsley Hospitals NHS Trust Whiston Hospital (e-direct)	1	3			NHSSC
St Mary's NHS Trust St Mary's Hospital (e-direct)	1	3			NHSSC
Weston Area Health NHS Trust Weston General Hospital (e-direct)	1	3			NHSSC
Redcar and Cleveland PCT Riverside House (eros)	1	3		2	EROS
Blackpool, Fylde and Wyre Hospitals NHS Trust Victoria Hospital (e-direct)	1	2			NHSSC
Mayday Healthcare NHS Trust Energy Centre (e-direct)	1	2			NHSSC
North West Wales NHS Trust Ysbyty Gwynedd (e-direct)	1	2		2	NHSSC
Poole General Hospital NHS Trust Poole General Hospital NHS Trust HQ (e-direct)	1	2			NHSSC
Tameside and Glossop PCT New Century House (e-direct)	1	2			NHSSC
West Midlands Ambulance Service NHS Trust Stoke Ambulance Station (e-direct)	1	2			NHSSC
Ashford and St Peter's Hospitals NHS Trust St Peters Hospital (e-direct)	1	1			NHSSC
Avon and Wiltshire Mental Health Partnership NHS Trust Bath NHS House (e-direct)	1	1			NHSSC
Barnsley Hospital NHS Foundation Trust (e-direct)	1	1			NHSSC
Cambridgeshire PCT Block 23, Heron Court (e-direct)	1	1			NHSSC



## E-TRADING STATISTICS – AUGUST 2009 (EXCLUDING PHARMACY)

ORGANISATIONS	T/R	ORD	INV	CNF	TYPE
Chesterfield Royal Hospital NHS Foundation Trust (e-direct)	1	1			NHSSC
Cornwall Partnership NHS Trust (e-direct)	1	1			NHSSC
Countess of Chester Hospital NHS Foundation Trust Countess Of Chester Hospital (e-direct)	1	1			NHSSC
County Durham PCT John Snow House (e-direct)	1	1			NHSSC
Dartford and Gravesham NHS Trust Darent Valley Hospital (e-direct)	1	1			NHSSC
Gateshead Health NHS Foundation Trust Queen Elizabeth Hospital (e-direct)	1	1			NHSSC
Herefordshire PCT Belmont Abbey (e-direct)	1	1			NHSSC
Hinchingbrooke Health Care NHS Trust Hinchingbrooke Hospital (e-direct)	1	1			NHSSC
Kirklees PCT St. Lukes House (e-direct)	1	1			NHSSC
Liverpool PCT (e-direct)	1	1			NHSSC
Moorfields Eye Hospital NHS Foundation Trust (e-direct)	1	1			NHSSC
National Vet Supplies (e-direct)	1	1			NHSSC
Nations Healthcare (Nottingham) Ltd Nottingham NHS Treatment Centre (e-direct)	1	1			NHSSC
North Middlesex University Hospital NHS Trust (e-direct)	1	1			NHSSC
Nuffield Orthopaedic Centre NHS Trust (e-direct)	1	1			NHSSC
Queen Elizabeth Hospital NHS Trust Ranken House (e-direct)	1	1			NHSSC
Robert Jones & Agnes Hunt Orthopaedic & Dist Hosp NHS Tr (e-direct)	1	1			NHSSC
Sandwell and West Birmingham Hospitals NHS Trust City Hospital (e-direct)	1	1			NHSSC
Sheffield Care Trust Fulwood House (e-direct)	1	1			NHSSC
Sheffield Childrens Hospital NHS Trust (e-direct)	1	1			NHSSC
Shropshire County PCT William Farr House (e-direct)	1	1			NHSSC
South Birmingham PCT Trust HQ, Moseley Hall Hospital (e-direct)	1	1			NHSSC
South Staffordshire & Shropshire Healthcare NHS Trust Trust Headquarters, St. Georges Hospital (e-direct)	1	1			NHSSC
South Warwickshire General Hospitals NHS Trust Warwick Hospital (e-direct)	1	1			NHSSC
Sunderland Teaching PCT Pemberton House (e-direct)	1	1			NHSSC
Sussex Orthopaedic NHS Treatment Centre The Princess Royal Hospital (e-direct)	1	1			NHSSC
The Benenden Hospital Trust (e-direct)	1	1			NHSSC
The Oxford Clinic for Specialist Surgery (e-direct)	1	1			NHSSC
The Royal Marsden NHS Foundation Trust Royal Marsden Hospital (e-direct)	1	1			NHSSC
Warrington and Halton Hospitals NHS Foundation Trust Warrington Hospital (e-direct)	1	1			NHSSC
York Hospitals NHS Trust York Hospital (e-direct)	1	1			NHSSC
HMP Verne (e-direct)	1	1			NHSSC
RAF Cranwell Medical Centre (e-direct)	1	1			NHSSC
South London Healthcare NHS Trust Queen Mary's Hospital (e-direct)	1	1			NHSSC
Stockport PCT 8th Floor, Regent House (e-direct)	1	1			NHSSC
Sutton and Merton PCT Hamilton Wing (e-direct)	1	1			NHSSC
The Queen Elizabeth Hospital King's Lynn NHS Trust Queen Elizabeth Hospital	1	1			NHSSC

**E-TRADING STATISTICS – AUGUST 2009**  
(EXCLUDING PHARMACY)

ORGANISATIONS	T/R	ORD	INV	CNF	TYPE
(e-direct)					
The University of York Department of Health Sciences (e-direct)	1	1			NHSSC
Winchester and Eastleigh Healthcare NHS Trust Royal Hampshire County Hospital (sbs)			4		SBS
Whipps Cross University Hospital NHS Trust Whipps Cross Hospital (sbs)			19		SBS
North Bristol NHS Trust Frenchay Hospital (sbs)			83		SBS
Portsmouth Hospitals NHS Trust De La Court House (sbs)			130		SBS
NHS Supply Chain (Alfreton) (distributor)			3307		Distributor
Bradford and Airedale Teaching PCT Douglas Mill (sbs)			1		SBS
Bromley Hospitals NHS Trust The Princess Royal University (sbs)			1		SBS
Ashford and St Peter's Hospitals NHS Trust St Peters Hospital (sbs)			13		SBS
Bradford Teaching Hospitals NHS Foundation Trust Bradford Royal Infirmary (sbs)			13		SBS
Barking, Havering and Redbridge Hospitals NHS Trust Queens Hospital (sbs)			15		SBS

**E-TRADING STATISTICS – AUGUST 2009**  
(EXCLUDING PHARMACY)

**GLOSSARY**

**T/R** This column represents the total number of active Trading Relationships for the current month.

**ORD** This column represents the total number of Purchase Orders for the current month.

**INV** This column represents the total number of Invoices for the current month.

**CNF** This column represents the total number of Order Confirmation messages for the current month.

**TYPE**

For Selling Organisations this column shows the method used to deliver the electronic documents.

- eLink - The document is sent to the recipients system in an agreed Business to Business (B2B) format e.g. XML.
- eMail - The document is e-mailed to the recipient in a readable format (PDF).
- GXS - The document is forwarded via the EDI value added network: GXS Tradanet, in an agreed EDI format e.g. TRADACOMS.

For Buying Organisations this column shows the Purchasing/Finance System being used.