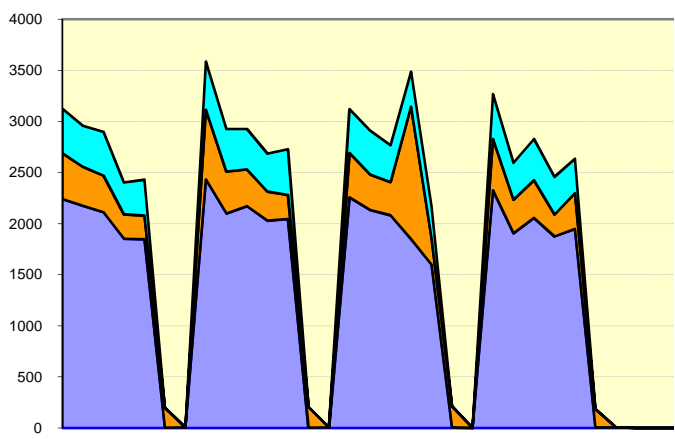
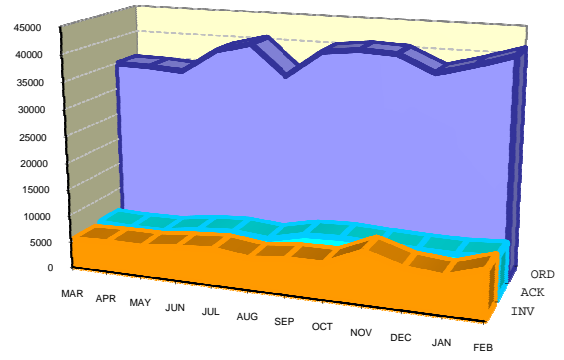


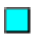


## E-TRADING STATISTICS – FEBRUARY 2010 (EXCLUDING PHARMACY)

TRANSACTIONS PER DAY



GROWTH



-  The Stock Response / Confirmation Message
-  The Invoice Message
-  The Purchase Order Message

These two charts illustrate the volume of traffic passing through the GHX Exchange.

## E-TRADING STATISTICS – FEBRUARY 2010 (EXCLUDING PHARMACY)

### ACTIVE SUPPLIERS

*See the notes at the end of this document, for an explanation of what the values represent.*

ORGANISATIONS	T/R	ORD	INV	CNF	TYPE
10521 - Covidien (UK) Commercial Ltd	179	2099	1462	4014	eLink-ASN
10087 - Johnson & Johnson Medical Ltd	169	3106	978		eLink
10513 - Depuy International Ltd	82	1567	124	1383	eLink
10262 - B. Braun Medical Ltd	73	760			eLink
10509 - Bard Ltd	62	1070	71		eLink-ASN
10511 - Boston Scientific Ltd	33	1243	721	744	eLink
10518 - Medtronic Ltd	33	950		1377	eLink
10224 - Vygon UK Ltd	28	409	18		eLink
10090 - Buzl Healthcare Ltd	25	4821	3588		eLink
10057 - Baxter Healthcare Ltd	25	323	1		eLink
10127 - Henleys Medical Supplies Ltd	25	191			eMail
10507 - Arizant UK	24	162			eMail
10742 - Cook UK Ltd	22	702			eMail
10695 - Intersurgical Ltd	22	255			eMail
10705 - Terumo UK	22	254			eMail
10259 - Stryker UK Ltd	21	495		17	eLink
10678 - Zimmer Ltd	21	279			eMail
10272 - Edwards Lifesciences Ltd	20	226		162	eLink
10691 - Cory Brothers	19	115			eMail
10510 - Becton Dickinson UK Ltd	18	118			eMail
10229 - Rocket Medical PLC	18	108			eMail
10651 - Altomed Ltd	18	64			eMail
10984 - Synthes Stratec Medical Ltd	17	433			eMail
10789 - Conmed Linvatec UK Ltd	17	152			eMail
10781 - Intavent Orthofix Ltd	17	139			eMail
10708 - Alexandra Plc	16	490			eMail
10701 - Sunlight Clinical Solutions	16	301			eMail
13976 - Systagenix (Wound Management)	16	192			eMail
10633 - Molnlycke Health Care Ltd	16	150		92	eLink
10082 - Fresenius Kabi Ltd	16	102			eLink
10716 - Astra Tech Ltd	16	87			eMail
10791 - Mana-Tech Ltd	16	74			eMail
10755 - Flexicare Medical	16	70			eMail
10727 - Biomérieux UK Ltd	16	66			eMail
10692 - Daniels Healthcare	16	54			eMail
10121 - Abbott Laboratories Ltd	15	161			eMail
10596 - Biomet UK Ltd	15	127			eMail

## E-TRADING STATISTICS – FEBRUARY 2010 (EXCLUDING PHARMACY)

ORGANISATIONS	T/R	ORD	INV	CNF	TYPE
11078 - Coloplast Ltd	15	99			eMail
10713 - Arthrocare UK Ltd	15	84			eMail
10517 - Kimal Plc	15	73			eLink
10697 - Medasil (Surgical) Ltd	15	46			eMail
11646 - Smith & Nephew Endoscopy	14	198			eMail
11142 - Teleflex Medical Ltd	14	92			eMail
10305 - Physio Med Services Ltd	14	73			eMail
11803 - Ambu Ltd	14	66			eMail
11708 - Kapitek Healthcare Ltd	14	53			eMail
10286 - Summit Medical Ltd	14	45			eMail
10966 - Schuco International (London) Ltd	14	22			eMail
10698 - Nikomed Ltd	14	18			eMail
11608 - St Jude Medical UK Ltd	13	174			eMail
10779 - Hospital Metalcraft Ltd	13	97			eMail
10756 - Forth Medical Ltd	13	85			eMail
10989 - Timesco of London	13	80			eMail
10402 - Gambro Lundia AB	13	75			eMail
11812 - UK Medical Ltd	13	48			eMail
10792 - Medgraphics	13	38			eMail
10408 - John Weiss & Son Ltd	13	29			eMail
10415 - Trulife Ltd	12	337			eMail
11943 - Olympus Keymed Ltd	12	177			eMail
11662 - Draeger Medical Ltd	12	90			eMail
10911 - Proact Medical Ltd	12	83			eMail
11722 - Arthrex Ltd	12	69			eMail
12880 - Huntleigh Healthcare Ltd (Luton) Pressure Area Care Division	12	66			eMail
10744 - Dako UK Ltd	12	43			eMail
10412 - Squadron Medical	11	3331			eLink
10538 - Smith and Nephew Orthopaedics	11	136			eMail
10410 - Oxoid Ltd	11	81			eMail
10793 - Medi UK Ltd	11	69			eMail
11545 - Merit Medical UK Ltd	11	61			eMail
10784 - Karl Storz Endoscopy (UK) Ltd (Consumables)	11	59			eMail
10696 - Unomedical Ltd (A Convatec Co)	11	57			eMail
11665 - Sorin Group UK Ltd	11	56			eMail
11809 - Fisher & Paykel Healthcare Ltd	11	55			eMail
11611 - Homecraft Rolyan Ltd	11	53			eMail
10315 - BSN Medical Ltd	11	53			eMail
10238 - Roche Diagnostics	11	49			eMail
12875 - Toffeln (Bristol)	10	113			eMail
10083 - Alcon Laboratories (UK) Ltd	10	88			eMail

## E-TRADING STATISTICS – FEBRUARY 2010

(EXCLUDING PHARMACY)

ORGANISATIONS	T/R	ORD	INV	CNF	TYPE
11687 - Ossur UK	10	85			eMail
10997 - Vernacare Ltd	10	71			eMail
10467 - Sunrise Medical Ltd	10	70			eMail
11686 - Mercian Surgical Supply Co Ltd	10	42			eMail
10473 - Fisher Scientific UK Ltd	10	37			eMail
10717 - Athrodax Ltd	10	26			eMail
11692 - Smiths Medical International Ltd	9	103			eMail
11676 - Philips Medical Systems UK Ltd	9	71			eMail
11606 - Arjo Ltd	9	51			eMail
10189 - Bausch and Lomb (UK) Surgical	9	48			eMail
10405 - Health Edge Solutions Ltd	9	47			eMail
13079 - Diagmed Healthcare Ltd	9	46			eMail
10988 - Therapy Equipment Ltd	9	40			eMail
11941 - Carl Zeiss Ltd	9	32			eMail
10594 - Hospira	9	28			eMail
10723 - BDF Ltd	9	26			eMail
10700 - Robinson Healthcare Ltd	9	25			eMail
10309 - Baxa Ltd	9	25			eMail
11536 - Carefusion UK 223 Ltd	8	97			eLink
12993 - Synergy Healthcare Plc	8	69			eMail
11003 - Western Laboratory Solutions	8	65			eMail
11146 - VWR International Ltd	8	55			eMail
10914 - Radiometer Ltd	8	43			eMail
11811 - Pyramed Ltd	8	43			eMail
11717 - Bunzl Catering Supplies	8	39			eMail
10739 - Clinipak Ltd	8	38			eMail
10913 - Promedics Ltd	8	37			eMail
10795 - Mediplus Ltd	8	37			eMail
11714 - Vasutek Ltd	8	36			eMail
10303 - RL Dolby & Co Ltd	8	34			eMail
10062 - Smith & Nephew Healthcare - Wound Management	8	33			eMail
11187 - P3 Medical Ltd	8	31			eMail
10965 - Sarstedt Ltd	8	29			eMail
10398 - Codan Ltd	8	23			eMail
11002 - Wescott Medical Ltd	8	18			eMail
10754 - Eurosurgical Ltd	8	13			eMail
10724 - Fresenius Medical Care	7	94			eMail
10699 - Paul Hartmann Ltd	7	52			eMail
10719 - Fannin (UK) Ltd	7	52			eMail
10175 - Allergan Ltd	7	48			eMail
11701 - Greiner Bio-One Ltd	7	47			eMail

## E-TRADING STATISTICS – FEBRUARY 2010 (EXCLUDING PHARMACY)

ORGANISATIONS	T/R	ORD	INV	CNF	TYPE
11236 - GE Medical Systems Information Technology	7	46			eMail
11157 - 3M Health Care Ltd	7	41			eMail
11718 - Wright Medical UK Ltd	7	39			eMail
10480 - Beckman Coulter UK Ltd	7	36			eMail
11612 - Resmed (UK) Ltd	7	35			eMail
10748 - Desoutter Medical Ltd	7	33			eMail
11797 - Corin Medical Ltd	7	33			eMail
10399 - Armstrong Medical Ltd	7	30			eMail
11822 - Casmed International Ltd	7	30			eMail
10604 - Rayner Intraocular Lenses Ltd	7	27			eMail
11750 - Marshall Products Ltd	7	19			eMail
10693 - Eschmann Holdings Ltd	7	15			eMail
10970 - Seward-Thackray	7	11			eMail
11721 - Medisavers	6	115			eMail
11083 - Medicina Ltd	6	62			eMail
10260 - Carefusion UK 306 Ltd (Alaris)	6	59			eMail
10973 - Sigma Aldrich Co Ltd	6	58			eMail
11659 - KCI Medical Ltd	6	58			eMail
11004 - Westfield Medical Ltd	6	57			eMail
10760 - Frontier Multigate	6	35			eMail
10771 - Grahame Gardner Ltd	6	33			eMail
10085 - Nutricia Ltd	6	32			eMail
11548 - Siemens Medical Solutions Diagnostics Europe Ltd	6	28			eMail
13293 - Mentor Medical Systems Ltd	6	27			eMail
10982 - Leica Biosystems Peterborough Ltd	6	27			eMail
11762 - Patterson Medical Ltd (Physio)	6	24			eMail
11805 - MDM Medical Ltd	6	23			eMail
11905 - Chartrite Ltd	6	22			eMail
10483 - The Tristel Company Ltd	6	21			eMail
10623 - Midco Print & Packaging Ltd	6	21			eMail
10710 - DLS Medical	6	21			eMail
13073 - Anetic Aid Ltd	6	20			eMail
12964 - Welch Allyn UK Ltd	6	18			eMail
11723 - Days Healthcare UK Ltd	6	17			eMail
11747 - Mantis Surgical Ltd	6	17			eMail
13496 - Laerdal Medical AS	6	17			eMail
13082 - DTR Medical Ltd	6	16			eMail
13574 - ERBE Medical UK Ltd	6	16			eMail
10122 - Convatec Ltd	6	15			eMail
11754 - Kavo Dental Ltd	6	13			eMail
10526 - Helapet Ltd	6	12			eMail

## E-TRADING STATISTICS – FEBRUARY 2010 (EXCLUDING PHARMACY)

ORGANISATIONS	T/R	ORD	INV	CNF	TYPE
11715 - Owen Mumford Ltd	6	11			eMail
10794 - Medical Wire & Equipment Company	6	8			eMail
11026 - NHS Supply Chain (Bridgwater)	5	1803	1628		eLink
10239 - Office Depot (UK) Ltd	5	934	255		eLink
11569 - Joint Replacement Instrumentation Ltd	5	49			eMail
11704 - Carefusion UK 306 Ltd	5	37			eMail
10180 - Canonbury Products Ltd	5	37			eMail
13080 - DJO UK Ltd	5	31			eMail
10871 - Acumed Ltd	5	28			eMail
10598 - Distinctive Medical Products Ltd	5	27			eMail
10976 - Spectrum Ophthalmics	5	25			eMail
11756 - GN Resound Ltd	5	24			eMail
10867 - Nisbets	5	22			eMail
11893 - Inspiration Healthcare Ltd	5	18			eMail
11584 - Ecolab Ltd (Swindon)	5	17			eMail
10188 - Merck Serono Ltd	5	15			eMail
11763 - Pulse Surgical Ltd	5	15			eMail
13644 - Lancer UK Ltd	5	14			eMail
10485 - Pall Medical	5	12			eMail
11796 - American Medical Systems (UK) Ltd	5	12			eMail
11000 - Vitalograph Ltd	5	10			eMail
10777 - Hollister Ltd	5	10			eMail
11942 - Sigmacon (UK) Ltd	5	8			eMail
10381 - CliniMed Ltd	5	8			eMail
11807 - Pulsion Medical UK Ltd Unit C4 Heathrow Corporate Park	5	7			eMail
10531 - Guest Medical Ltd	5	5			eMail
10553 - Henry Schein Minerva Dental Ltd	4	94			eMail
13092 - Harlow Printing Ltd	4	75			eMail
10746 - GE Healthcare Systems (Consumables)	4	41			eMail
11159 - Henry Schein Procure	4	40			eMail
11719 - Business Dictation Ltd	4	38			eMail
10086 - Bausch & Lomb	4	34			eMail
10091 - Vernon-Carus Ltd	4	33			eMail
11092 - Screwfix Direct	4	30			eMail
10702 - Rusch UK Ltd	4	27			eMail
13439 - Protech Medical Ltd	4	25			eMail
13560 - Maquet Ltd	4	23			eMail
13519 - Integra Neurosciences Ltd	4	23			eMail
12962 - HC Slingsby PLC	4	23			eMail
10996 - Vacsax Ltd	4	18			eMail
10902 - Nimans Ltd	4	17			eMail

## E-TRADING STATISTICS – FEBRUARY 2010 (EXCLUDING PHARMACY)

ORGANISATIONS	T/R	ORD	INV	CNF	TYPE
13533 - Exmoor Plastics Ltd	4	17			eMail
11775 - BOC Ltd	4	15			eMail
12107 - Carefusion UK 235 Ltd	4	15			eMail
12298 - Peskett Solutions Ltd	4	14			eMail
10709 - AMO UK Ltd	4	13			eMail
13557 - Medical Innovations Ltd	4	13			eMail
11800 - Northstar Orthopaedics Ltd	4	11			eMail
10285 - Shield Medicare Ltd	4	10			eMail
13427 - Respironics (UK) Ltd	4	9			eMail
10796 - Meltemi Company Clothing Ltd	4	9			eMail
13813 - Carefusion UK 240 Ltd	4	9			eMail
13566 - Cardiac Services UK Ltd	4	8			eMail
10916 - RB Medical T/A RB Medical Eng	4	8			eMail
10622 - Celfix Labels	4	7			eMail
10088 - Banner Business Supplies Ltd	4	6			eMail
13340 - Genta Medical	4	5			eMail
11015 - Lyreco UK Ltd	3	801			eMail
10961 - UK Laser	3	622			eMail
11709 - Invacare (UK) Ltd	3	129			eMail
11912 - Newhall Janitorial Ltd	3	126			eMail
12950 - Unisurge International Ltd	3	54			eMail
13471 - Ev3 Ltd	3	45			eMail
10512 - Claudius Ash	3	28			eMail
11496 - Oxylitre Ltd	3	26			eMail
12868 - Hospital Innovations Ltd	3	26			eMail
13502 - Instrumentation Laboratory UK	3	22			eMail
12956 - Argos Business Solutions Corporate	3	20			eMail
11801 - Ortho Solutions Ltd	3	18			eMail
13578 - Ortho-Care (UK) Ltd	3	15			eMail
10960 - South Western Surgical Ltd	3	13			eMail
13437 - Phadia Ltd	3	13			eMail
13556 - Medisafe UK Ltd	3	13			eMail
13436 - Bio-Rad Laboratories	3	13			eMail
13607 - Cochlear Europe Ltd	3	12			eMail
13414 - GBUK Healthcare	3	12			eMail
10785 - Kelway (UK) Ltd	3	11			eMail
13090 - Haag-Streit UK	3	10			eMail
13625 - Synectics Medical Ltd	3	10			eMail
11799 - Haemonetics Ltd	3	9			eMail
13545 - Prospect Diagnostics Ltd	3	9			eMail
10474 - Optident (UK) Ltd	3	9			eMail

## E-TRADING STATISTICS – FEBRUARY 2010 (EXCLUDING PHARMACY)

ORGANISATIONS	T/R	ORD	INV	CNF	TYPE
13527 - Single Use Surgical Ltd	3	9			eMail
13089 - Greenham Trading Ltd (Wales)	3	9			eMail
13598 - Osteotec Ltd	3	8			eMail
13534 - Hospital Direct (Marketing) Ltd	3	8			eMail
13552 - Medrad UK Ltd	3	7			eMail
13624 - Mindray (UK) Ltd	3	7			eMail
11760 - Siemens Hearing Instruments Ltd	3	7			eMail
13558 - Siemens Healthcare Diagnostics Ltd	3	7			eMail
11130 - Millipore (Uk) Ltd	3	6			eMail
12954 - A Algeo Ltd	3	6			eMail
10624 - Lidco Ltd	3	6			eMail
13580 - Biohit Ltd (T/A Pipette Doctor)	3	6			eMail
10743 - Cuxson Gerrard & Co Ltd	3	5			eMail
12302 - Biotronik UK Ltd	3	5			eMail
13410 - Bio Diagnostics Ltd	3	5			eMail
13438 - Pro-lab Diagnostics	3	5			eMail
13675 - Deltex Medical Ltd Deltex House	3	5			eMail
10759 - 365 Healthcare	3	4			eMail
11808 - Cryolife Europa Ltd	3	3			eMail
10798 - Patterson Medical Ltd (Podiatry)	3	3			eMail
11178 - WR Bishop	2	127			eMail
11610 - Creed Catering Supplies Ltd	2	53			eMail
11684 - Apatech Ltd	2	38			eMail
13618 - Simon Jersey Ltd	2	30			eMail
11237 - Bridgend Office Furniture	2	28			eMail
13680 - Micrus Endovascular UK Ltd	2	27			eMail
13068 - Supplies Team	2	24			eLink
11688 - DBC Foodservice	2	22			eMail
13514 - Applera UK T/A Applied Biosystems	2	22			eMail
11634 - GE Healthcare	2	22			eMail
10447 - Vitaflo Ltd	2	21			eMail
12955 - All Print	2	18			eMail
10979 - Sterilox Technologies International Ltd	2	17			eMail
10703 - Shermond	2	17			eMail
13532 - NeuroTherm Ltd	2	17			eMail
11675 - Microvention UK Ltd	2	16			eMail
13646 - Judd Medical Ltd	2	16			eMail
11818 - Medichem International (Marketing) Ltd	2	15			eMail
13435 - Anachem Ltd	2	13			eMail
14176 - E&O Laboratories Ltd	2	12			eMail
12382 - Steris Ltd	2	12			eMail



## E-TRADING STATISTICS – FEBRUARY 2010 (EXCLUDING PHARMACY)

ORGANISATIONS	T/R	ORD	INV	CNF	TYPE
13420 - Lifecare Hospital Supplies Ltd	2	12			eMail
13086 - Gilbert & Mellish Ltd	2	11			eMail
10747 - Deb Ltd	2	11			eMail
10704 - Swann Morton Ltd	2	11			eMail
13630 - Malosa Medical	2	11			eMail
13621 - Molton Brown Limited	2	10			eMail
13572 - Kingspeed Services	2	10			eMail
13450 - Vital Signs	2	10			eMail
12854 - Lexar Media	2	10			eMail
11093 - LH Evans	2	10			eMail
10775 - HPC Healthline UK Ltd	2	10			eMail
14284 - ELGA Process Water	2	8			eMail
11745 - Bayer PLC	2	8			eMail
10977 - Stamps Direct Ltd	2	8			eMail
11819 - Huntleigh Healthcare (Cardiff) Diagnostic Products Division	2	8			eMail
10293 - CSL Behring UK Ltd	2	8			eMail
13648 - Delta Surgical Ltd	2	7			eMail
13499 - Icom Works Ltd	2	7			eMail
13678 - Cellpath Plc	2	6			eMail
13573 - Melyd Medical Ltd	2	6			eMail
11391 - Arco Wessex (East Anglia)	2	6			eMail
11478 - Quality Enabling Devices Ltd	2	6			eMail
13434 - Alpha Laboratories	2	6			eMail
10089 - UDG	2	6			eMail
10774 - Gyrus International Ltd	2	6			eMail
10981 - Surgicraft Ltd	2	5			eMail
13492 - Medicare Colgate Ltd	2	5			eMail
13494 - Euro Energy Resources Ltd	2	5			eMail
13592 - Paramount Medical Solutions Ltd	2	5			eMail
11503 - Medical Access Ltd	2	5			eMail
11133 - Pentland Medical Ltd	2	5			eMail
13412 - MGC Lamps Ltd	2	5			eMail
13584 - Medicell Ltd	2	5			eMail
13294 - Sterilin Ltd	2	4			eMail
13828 - The Binding Site Limited	2	4			eMail
13993 - WL Gore & Associates (UK) Ltd Heatherpark	2	4			eMail
14297 - International Scientific Supplies	2	4			eMail
13817 - Porter Nash Medical	2	4			eMail
10995 - Uroplasty Ltd	2	4			eMail
13553 - Litechnica Ltd	2	4			eMail
10787 - Kestrel Ophthalmics Ltd	2	4			eMail

## E-TRADING STATISTICS – FEBRUARY 2010

(EXCLUDING PHARMACY)

ORGANISATIONS	T/R	ORD	INV	CNF	TYPE
12297 - Bio Products Laboratory	2	4			eMail
10261 - Elgin Medical Ltd	2	4			eMail
13116 - Cardiacare Ltd	2	4			eMail
13891 - Aspen Medical	2	4			eMail
11667 - Safewear	2	3			eMail
11505 - Technoclone Ltd	2	3			eMail
10268 - Axis-Shield Diagnostics Ltd	2	3			eMail
10649 - Bio-Stat Diagnostic Systems	2	3			eMail
13587 - Anita UK Ltd	2	3			eMail
11226 - Stericom Ltd	2	3			eMail
10990 - Tomlinson Book Service	2	3			eMail
11172 - Amercare Ltd	2	3			eMail
14310 - Medartis	2	3			eMail
13503 - Sysmex UK Ltd	2	3			eMail
13634 - Altrax Group Limited	2	3			eMail
13608 - J P Lennard Ltd	2	2			eMail
13586 - New Splint Ltd	2	2			eMail
13656 - Dantec Dynamics Ltd	2	2			eMail
13664 - Insight Medical Products Ltd	2	2			eMail
10278 - Maco Pharma UK Ltd	2	2			eMail
10677 - Imotek International Ltd	2	2			eMail
13470 - A Menarini Diagnostics UK Ltd	2	2			eMail
13559 - Penlon Ltd	2	2			eMail
11049 - Jencons PLS	2	2			eMail
11673 - Allens Printers and Stationers Ltd	1	212			eMail
13449 - Impact Office Equipment	1	151			eMail
14522 - Contrac IT Source	1	124			eMail
11081 - Moreton Hall Press Ltd	1	96			eMail
14386 - August Computers Ltd	1	96			eMail
13979 - Santana Hardware Ltd	1	67			eMail
11072 - John Sheppard Butchers	1	63			eMail
10255 - Fast-Aid Products Ltd	1	55			eMail
10959 - Farmer Johns Dark Grove Farm Ltd	1	52			eMail
12963 - Set (Office Supplies) Ltd	1	48			eMail
11080 - Boyd Cooper Dimensions Ltd	1	46			eMail
11806 - Surgi C Ltd The Innovation Centre, Longbridge Technology Park	1	41			eMail
13032 - Stone Computers Ltd	1	39			eMail
13027 - LaserBand LLC	1	38			eMail
14319 - Norville Group Ltd	1	38			eMail
12958 - Comcen Computer Supplies Ltd	1	35			eMail
13513 - Health Care Services	1	32			eMail

## E-TRADING STATISTICS – FEBRUARY 2010 (EXCLUDING PHARMACY)

ORGANISATIONS	T/R	ORD	INV	CNF	TYPE
11711 - NH Case Ltd	1	32			eMail
11079 - Computing Needs Ltd	1	24			eMail
13031 - Computerworld (Wales) Ltd	1	24			eMail
12856 - Blackwell University Bookshop	1	24			eMail
13074 - Arval UK Ltd	1	24			eMail
13548 - K-Med	1	23			eMail
10529 - Nestle Clinical Nutrition	1	22			eMail
13441 - R & L Slaughter Ltd	1	21			eMail
13549 - Microtek Ltd	1	21			eMail
12393 - Ellis Eggs	1	19			eMail
14368 - Bound Tree Medical Europe Ltd	1	19			eMail
10067 - AAH Hospital Service (Coventry)	1	18		18	eLink
11694 - NHS Supply Chain (Runcorn)	1	18			eLink
10209 - TPS Medical	1	18			eMail
13368 - JohnsonDiversey UK Ltd	1	15			eMail
14382 - Special Wear UK Ltd	1	15			eMail
13590 - Lawmed Ltd	1	14			eMail
11804 - Ash Medical Ltd	1	14			eMail
10956 - Arrow International UK Ltd	1	14			eMail
14272 - Bluesky Optical Design & Innovation	1	13			eMail
14381 - Hi-Tec Sports UK Ltd	1	13			eMail
11703 - Key Catering Plc	1	12			eMail
11660 - R82 UK Ltd	1	12			eMail
11689 - Highway & Industrial Equipment Ltd	1	12			eMail
11720 - Orange PCS Ltd	1	11			eMail
13910 - Pads Printing & Stationary Limited	1	11			eMail
13803 - OrbusNeich Medical B.V.	1	11			eMail
13528 - Alliance Disposables	1	10			eMail
10080 - Bracco UK Ltd	1	10			eMail
10690 - B M Polyco Ltd	1	10			eMail
13530 - Hygiene Systems Ltd	1	10			eMail
13072 - Amberwell Engineering Services	1	10			eMail
13866 - AGA Medical Ltd	1	9			eMail
14493 - Ron Chalker	1	9			eMail
13612 - Spacelabs Healthcare Ltd	1	8			eMail
11530 - Full Support Healthcare Ltd	1	8			eMail
11755 - B & D Electromedical	1	8			eMail
13145 - Pasta King UK Ltd.	1	7			eMail
13537 - Bunzl Cleaning and Hygiene Supplies	1	7			eMail
13588 - Movianto UK Ltd	1	7			eMail
11672 - Gerald Simonds Healthcare Ltd	1	7			eMail

## E-TRADING STATISTICS – FEBRUARY 2010 (EXCLUDING PHARMACY)

ORGANISATIONS	T/R	ORD	INV	CNF	TYPE
13536 - Hospital General Supplies	1	7			eMail
13683 - Imperial Hygiene Services Limited	1	7			eMail
11696 - NHS Supply Chain (Maidstone)	1	6			eLink
13924 - Bolton Surgical Limited	1	6			eMail
14326 - Qiagen Ltd	1	6			eMail
13541 - Intuitive Surgical Sarl	1	6			eMail
11932 - Browning Jones & Morris Ltd	1	6			eMail
12394 - PM Labels	1	6			eMail
13445 - Solmedia Ltd	1	6			eMail
13407 - Abbott Vascular	1	6			eMail
13078 - Design Stage Ltd	1	6			eMail
11933 - Cardiff Lock & Safe Co Ltd	1	6			eMail
14453 - JL Group Ltd (JL Print Management)	1	6			eMail
11616 - SP Services (UK) Ltd	1	5			eMail
13457 - Launch Diagnostics Ltd	1	5			eMail
10799 - Monosol AF Ltd	1	5			eMail
14375 - Nova Biomedical UK	1	5			eMail
13751 - Applied Medical UK Ltd	1	5			eMail
13821 - Karl Storz Endoscopy (UK) Ltd (Repairs)	1	5			eMail
13564 - Medisco Medical Systems	1	5			eMail
13944 - Misco Computer Supplies	1	5			eMail
13900 - BK Medical (UK) Ltd	1	5			eMail
14331 - Scientific Laboratory Supplies Ltd	1	5			eMail
14384 - Pacific Helmets	1	5			eMail
10059 - Janssen Cilag Ltd	1	4			eLink
14320 - Optima Low Vision Services Ltd	1	4			eMail
13589 - Rex Regal Ltd	1	4			eMail
11613 - Alexandra Plc (Scotland)	1	4			eMail
12959 - Dell Computer Corporation Ltd	1	4			eMail
13657 - Sandhill Scientific UK Ltd	1	4			eMail
10481 - Medex Medical Ltd	1	4			eMail
10712 - Arco Wessex (Ossett)	1	4			eMail
12876 - Kent Express Ltd	1	4			eMail
10066 - Phoenix Healthcare Distribution Ltd	1	4		4	eMail
10275 - Grifols UK Ltd	1	4			eMail
12957 - Boucon Network Solutions Ltd	1	4			eMail
14371 - Ferno UK Ltd	1	4			eMail
14409 - Balmoral Meats Unit 1 Ashbury Business Park	1	4			eMail
14312 - Medfor Products Ltd	1	4			eMail
13202 - Geistlich Sons Ltd	1	3			eMail
10728 - BMS Critical Care Ltd.	1	3			eMail

## E-TRADING STATISTICS – FEBRUARY 2010 (EXCLUDING PHARMACY)

ORGANISATIONS	T/R	ORD	INV	CNF	TYPE
13550 - Core Surgical	1	3			eMail
13542 - Credenhill Ltd	1	3			eMail
13600 - Mitre, Hall and Letts	1	3			eMail
10634 - CME Mckinley Medical UK Ltd	1	3			eMail
11930 - Talbot-Owen Tools & Fasteners Ltd	1	3			eMail
13535 - Medical Devices Ltd	1	3			eMail
13543 - ADC Fire Systems	1	3			eMail
13691 - Medical Graphics (UK) Ltd	1	3			eMail
14282 - Dunelm Optical Co Ltd	1	3			eMail
14289 - H Jenkinson & Co Ltd	1	3			eMail
14219 - Medela UK Ltd	1	3			eMail
13687 - Surgical Instruments Group Holdings Ltd	1	3			eMail
13083 - European Electronique	1	3			eMail
13315 - Easicook Microwave Ltd	1	3			eMail
14256 - Associated Optical Products	1	3			eMail
13842 - Codman Repairs	1	3			eMail
14259 - Bierly.Com Ltd	1	3			eMail
14296 - Intermark Medical Innovations Ltd	1	3			eMail
14252 - Advanced Bionics	1	3			eMail
14303 - Labmedics	1	3			eMail
14286 - Endoscopy UK Ltd	1	3			eMail
14030 - Pentax UK Limited	1	3			eMail
14532 - Brake Bros Foodservice Ltd	1	3			eMail
14328 - Quality Endodontic Distributors Ltd	1	3			eMail
13791 - York Medical Technologies Ltd Unit 12, Brookfield Business Park	1	2			eMail
13897 - KeyMed (Repairs) KeyMed House	1	2			eMail
13941 - Veni Vidi Limited	1	2			eMail
14206 - St John Cymru-Wales	1	2			eMail
14031 - Applied Healthcare Ltd	1	2			eMail
13603 - Sintek Ltd	1	2			eMail
13570 - Carefusion UK 236 Ltd	1	2			eMail
13732 - M · I · S · S Ophthalmics Ltd Unit 3, Ryder Court	1	2			eMail
13601 - Thomas Fattorini Ltd	1	2			eMail
13638 - Advanced Surgical Ltd	1	2			eMail
13451 - Sebia UK Ltd	1	2			eMail
13493 - Charles River Laboratories	1	2			eMail
13597 - Marlux Medical Limited	1	2			eMail
11857 - Legacy Telecom	1	2			eMail
11972 - GE Healthcare Accessories & Supplies Coolidge House	1	2			eMail
12108 - Pats Labels Ltd	1	2			eMail
12916 - Inverness Medical UK Ltd	1	2			eMail

## E-TRADING STATISTICS – FEBRUARY 2010 (EXCLUDING PHARMACY)

ORGANISATIONS	T/R	ORD	INV	CNF	TYPE
13829 - Dawmed International Ltd	1	2			eMail
13914 - GKS Curtain Services	1	2			eMail
13671 - Dixey Instruments Ltd	1	2			eMail
13731 - Leica Microsystems (UK) Ltd	1	2			eMail
13689 - Incom Telecommunications	1	2			eMail
11144 - Inverness Medical UK	1	2			eMail
13456 - Camlab Ltd	1	2			eMail
13316 - Travis Perkins	1	2			eMail
11901 - Temed	1	2			eMail
10198 - Oticon Ltd	1	2			eMail
13075 - AW Bent	1	2			eMail
13370 - Allens Office Ltd	1	2			eMail
13411 - Diamed GB Ltd	1	2			eMail
13617 - Protecx Medical Ltd	1	2			eMail
13620 - Agfa-Gevaert Ltd	1	2			eMail
13595 - Vertec Scientific Ltd	1	2			eMail
10281 - Octapharma Ltd	1	2			eMail
13531 - Hologic UK Ltd	1	2			eMail
13604 - Salient Surgical Technologies Inc	1	2			eMail
13585 - New Co-Ordinates Ltd	1	2			eMail
11572 - HVDS Air Filters	1	2			eMail
11147 - Wyeth Laboratories	1	2			eMail
13342 - Nipro Europe - UK Branch	1	2			eMail
13200 - Diagnostic Sonar Ltd	1	2			eMail
12965 - Winslow Rompa (UK) Ltd	1	2			eMail
11833 - A-T Instruments Ltd	1	2			eMail
14534 - LGC	1	2			eMail
14369 - Cardiac Science Holdings (UK) Ltd	1	2			eMail
14533 - Solution Express	1	2			eMail
14500 - Smith Bros Caer Conan Wholesale Ltd	1	2			eMail
14452 - J Barton & Co JB House	1	2			eMail
14353 - Valley Medical Systems Ltd	1	2			eMail
14309 - MAM UK Ltd	1	2			eMail
13867 - UK Neqas for Clinical Chemistry Birmingham Quality	1	2			eMail
13851 - Bioconnections	1	2			eMail
14295 - Hybec Ltd	1	2			eMail
14475 - Opalion Plastics	1	2			eMail
14343 - Technical Service Consultants Ltd	1	2			eMail
14506 - Talley Group Ltd Abbey Park Industrial Estate	1	2			eMail
14552 - Patterson Medical Ltd	1	2			eMail
11951 - Select Drinks Ltd	1	2			eMail

## E-TRADING STATISTICS – FEBRUARY 2010 (EXCLUDING PHARMACY)

ORGANISATIONS	T/R	ORD	INV	CNF	TYPE
11911 - Scilabware Ltd	1	1			eMail
11814 - Caridian BCT Europe NV	1	1			eMail
13081 - Drake A-V Video Ltd	1	1			eMail
11574 - Dental Directory	1	1			eMail
10919 - Reed Shilling	1	1			eMail
10963 - Sallis Ltd	1	1			eMail
10873 - Pearsalls Ltd	1	1			eMail
11052 - Ecolab (Leeds)	1	1			eMail
10978 - Standard Medical Ltd	1	1			eMail
10752 - EMS Medical Group Ltd	1	1			eMail
10561 - Dentoid Ltd	1	1			eMail
10472 - Diagenics Ltd	1	1			eMail
10276 - Guerbet Laboratories Ltd	1	1			eMail
13554 - Media Resources	1	1			eMail
13615 - Jade Medical Ltd	1	1			eMail
13501 - Clinical Innovations Europe	1	1			eMail
13544 - Cool Technic Ltd	1	1			eMail
13650 - OPT Complete Print Solutions Ltd	1	1			eMail
11931 - Plumbase Ltd	1	1			eMail
11884 - Kingfisher Pest Control	1	1			eMail
12851 - Jacobs Digital Photo & Video	1	1			eMail
13077 - Clement Clarke International Ltd	1	1			eMail
13442 - Mast Group Ltd	1	1			eMail
13540 - W.K.Thomas & Co Ltd	1	1			eMail
13576 - Acclarent Inc Healthlink Europe	1	1			eMail
13579 - Technology in Motion	1	1			eMail
10969 - Sentinel Laboratories Ltd	1	1			eMail
11129 - M & A Pharmachem Ltd	1	1			eMail
11813 - Orthodynamics	1	1			eMail
10736 - Cape Warwick Ltd	1	1			eMail
10753 - Euro Office Equipment	1	1			eMail
10401 - E-Z-EM (UK) Ltd	1	1			eMail
10442 - About Face Solutions Ltd	1	1			eMail
10318 - Cherwell Laboratories Ltd	1	1			eMail
13538 - Wise Worksafe	1	1			eMail
13505 - Dabs.com	1	1			eMail
13529 - AngioDynamics	1	1			eMail
10912 - Profile Respiratory System Ltd	1	1			eMail
10967 - Seca Ltd	1	1			eMail
12391 - Cambio Ltd	1	1			eMail
13076 - Synmed Ltd	1	1			eMail

## E-TRADING STATISTICS – FEBRUARY 2010 (EXCLUDING PHARMACY)

ORGANISATIONS	T/R	ORD	INV	CNF	TYPE
13461 - CJ Medical Ltd	1	1			eMail
13767 - Baxter Healthcare Ltd (renal) Renal Customer Services	1	1			eMail
13779 - Maplin Electronics Ltd	1	1			eMail
13633 - Quadrtech Diagnostics Ltd	1	1			eMail
13663 - John Bell & Croyden	1	1			eMail
13812 - Medical Imaging Systems Limited	1	1			eMail
13917 - Microgen Bioproducts Ltd	1	1			eMail
13929 - Docklands Waste Recycling Limited	1	1			eMail
13981 - Rochester Medical Ltd 10 Commerce Way	1	1			eMail
14062 - Gratnells Ltd	1	1			eMail
14130 - Bergmann Direct Ltd	1	1			eMail
14350 - Tungate Forms & Labels	1	1			eMail
14306 - Lina Medical UK Ltd	1	1			eMail
14330 - Repton Medical Ltd	1	1			eMail
14349 - Tom White Optical Co Ltd	1	1			eMail
14290 - Helena Biosciences	1	1			eMail
13814 - Axis Healthcare Ltd	1	1			eMail
13908 - Advanced Sterilization Products Johnson and Johnson	1	1			eMail
13942 - Ardmore Healthcare Ltd	1	1			eMail
13091 - Halo Healthcare Ltd	1	1			eMail
13443 - Microbiological Supply Co	1	1			eMail
13444 - Seton Ltd	1	1			eMail
11706 - Micronclean (Newbury) Ltd	1	1			eMail
13581 - Gelpack Excelsior Ltd	1	1			eMail
13649 - Olympic Print & Design	1	1			eMail
13653 - Purite Ltd	1	1			eMail
13605 - Radi Medical Systems Ltd	1	1			eMail
13636 - Kannegiesser UK Ltd	1	1			eMail
13756 - Lumenis UK Ltd Merit House	1	1			eMail
13774 - Mailbox Mouldings International Ltd	1	1			eMail
13798 - Dennys	1	1			eMail
13819 - Blue Box Medical Ltd	1	1			eMail
13834 - Jordan Woodrows Limited Stationary House	1	1			eMail
13690 - Stanley Security Solutions Stanley House	1	1			eMail
13692 - Neurotechnics Ltd Cephalon House	1	1			eMail
13561 - Finsbury Orthopaedics International Ltd	1	1			eMail
13631 - V.M. Marketing Ltd	1	1			eMail
13676 - Hermes Medical Solutions Ltd Grove House	1	1			eMail
13855 - Albert Waeschle Ltd	1	1			eMail
14033 - Imaging Equipment	1	1			eMail
14035 - Next Control Systems Ltd	1	1			eMail



## E-TRADING STATISTICS – FEBRUARY 2010 (EXCLUDING PHARMACY)

ORGANISATIONS	T/R	ORD	INV	CNF	TYPE
14311 - Med-EI UK Ltd	1	1			eMail
14313 - Menrad Optics Ltd	1	1			eMail
14307 - Lorne Laboratories Limited	1	1			eMail
13901 - Huntleigh Healthcare Diagnostics 35 Portmanmoor Road	1	1			eMail
13933 - Frobishers Alphinbrook House	1	1			eMail
14285 - Elkay Laboratory Products (UK) Ltd	1	1			eMail
13983 - Alliance Healthcare Ltd	1	1			eMail
13853 - Polybags Ltd Lyon Way	1	1			eMail
13865 - Care Shop	1	1			eMail
13832 - Carefusion UK 232 Ltd	1	1			eMail
13833 - WF Electrical Plc 13 Berners St	1	1			eMail
13841 - BBraun (Repairs)	1	1			eMail
10803 - Newey and Eyre Ltd (Preston Branch)	1	1			eMail
12912 - Glaxo Smith Kline	1	1			eMail
13448 - Trinity Biotech UK Sales Ltd	1	1			eMail
14430 - Hope Educational Ltd Hyde Buildings	1	1			eMail
14273 - Brulimar Optical Ltd	1	1			eMail
14477 - Peaks & Dales Medical Ltd Suite One	1	1			eMail
14501 - Southern Office Interiors	1	1			eMail
14508 - The Punjab Kitchen Ltd Eldon House	1	1			eMail
14509 - Torque Orthodontics Home Farm, The Tannery	1	1			eMail
14516 - Ws Rothband & Co Ltd	1	1			eMail
14355 - Viking Optical Ltd	1	1			eMail
14491 - Richardsons of Leicester Ltd	1	1			eMail
14503 - Static Systems	1	1			eMail
14467 - Meditech Systems Ltd Unit 3	1	1			eMail
14471 - Neopost Ltd Neopost House	1	1			eMail
14473 - Novacor UK Ltd/Hexacath Southern Cross Ind Est	1	1			eMail
14373 - Medical Gas Solutions Ltd	1	1			eMail
14254 - Air Safety	1	1			eMail
14283 - Ebiox Ltd	1	1			eMail
13907 - UK NEQAS for Immunology Immunochemistry,Department of Immunology	1	1			eMail
14298 - John Winter & Co	1	1			eMail
14356 - Web Scientific Ltd	1	1			eMail
14379 - W.Shuttleworth & Co Ltd	1	1			eMail
14300 - Lemaitre Vascular	1	1			eMail
14339 - Starlab (UK) Ltd	1	1			eMail
14347 - Thermo Shandon Ltd	1	1			eMail
14494 - RS Components Ltd	1	1			eMail
14413 - Camfil Farr Ltd	1	1			eMail

**E-TRADING STATISTICS – FEBRUARY 2010**  
(EXCLUDING PHARMACY)

ORGANISATIONS	T/R	ORD	INV	CNF	TYPE
14329 - Rathburn Chemicals Ltd	1	1			eMail
14341 - TAAB Laboratories Equipment Ltd	1	1			eMail
14344 - Technovent Ltd	1	1			eMail
14414 - Carina VT Ltd Lancaster House	1	1			eMail
14472 - Northern Foods	1	1			eMail
14492 - RLT Lamp Sales	1	1			eMail

## E-TRADING STATISTICS – FEBRUARY 2010 (EXCLUDING PHARMACY)

### ACTIVE CUSTOMERS

*See the notes at the end of this document, for an explanation of what the values represent.*

ORGANISATIONS	T/R	ORD	INV	CNF	TYPE
The London Clinic (other)	253	1703		151	Meditech
Cardiff and Vale NHS Trust University Hospital of Wales (oracle)	211	6037	2064	444	Oracle
HCA International Ltd (other)	177	3912	286	563	Meditech
Central Manchester University Hospitals NHS Foundation Trust Manchester Royal Infirmary Hospital (oracle nep)	173	967	20	122	Oracle NEP
Leeds Teaching Hospitals NHS Trust St. James`s University Hospital (oracle)	171	1991	341	517	Oracle
Aneurin Bevan Local Health Board Llanfrehfa Grange Hospital (oracle)	142	1476		92	Oracle
Abertawe Bro Morgannwg University Local Health Board Trust HQ (oracle)	130	2047	419	133	Oracle
Blackpool, Fylde And Wyre Hospitals NHS Trust Blackpool Victoria Hospital (powergate)	124	717		194	PowerGate
The Ipswich Hospital NHS Trust (eros)	110	917		107	EROS
North Bristol NHS Trust Trust Headquarters (eros)	106	922		157	EROS
University Hospitals Bristol NHS Foundation Trust Trust Headquarters (eros)	101	985		174	EROS
Welsh Health Supplies Central Stores (oracle)	99	680		42	Oracle
Trafford Healthcare NHS Trust Trafford General Hospital (sbs)	96	196		12	SBS
Nottingham University Hospitals NHS Trust Queens Medical Centre (powergate)	87	1061		288	PowerGate
Heart of England NHS Foundation Trust Birmingham Heartlands Hospital (oracle)	79	971		249	Oracle
Bupa Cromwell Hospital (powergate)	76	262		73	PowerGate
James Paget University Hospitals NHS Foundation Trust James Paget Hospital (powergate)	68	217		12	PowerGate
Fife Healthcare Supplies (powergate)	67	873		203	PowerGate
The Queen Elizabeth Hospital King's Lynn NHS Trust Queen Elizabeth Hospital (powergate)	67	444		82	PowerGate
Cumbria NHS Procurement Services Cumberland Infirmary (powergate)	65	326		66	PowerGate
Weston Area Health NHS Trust Weston General Hospital (eros)	60	251		17	EROS
West Suffolk Hospitals NHS Trust West Suffolk Hospital (powergate)	58	203		20	PowerGate
Norfolk & Norwich University Hospital NHS Trust Norfolk & Norwich University Hospital (powergate)	35	670		66	PowerGate
Royal Bournemouth & Christchurch Hosp NHS Found Trust The Royal Bournemouth Hospital (powergate)	29	910	483	178	PowerGate
Frimley Park Hospital NHS Foundation Trust Frimley Park Hospital (eros)	26	366		147	EROS
Oxford Radcliffe Hospitals NHS Trust John Radcliffe Hospital (oracle)	20	607		313	Oracle
North West Ambulance Service NHS Trust Ladybridge Hall (oracle nep)	16	99		5	Oracle NEP
Bristol PCT South Plaza (eros)	15	40			EROS
Plymouth Hospitals NHS Trust Derriford Hospital (sbs)	12	270	41	58	SBS
NHS Supply Chain (Normanton) (distributor)	10	3281	291	1714	Distributor
Barts and The London NHS Trust Trust Offices, Whitechapel (uk procure)	10	344	1	174	Ukprocure

## E-TRADING STATISTICS – FEBRUARY 2010 (EXCLUDING PHARMACY)

ORGANISATIONS	T/R	ORD	INV	CNF	TYPE
North Somerset PCT Waverley House (eros)	10	17		2	EROS
Devon PCT County Hall (sbs)	8	38			SBS
South Tees Hospitals NHS Trust James Cook University Hospital (eros)	7	272		195	EROS
County Durham & Darlington NHS Foundation Trust University Hospital of North Durham (eros)	7	217		118	EROS
North Tees and Hartlepool NHS Foundation Trust University Hospital of Hartlepool (eros)	7	101		84	EROS
AAH Hospital Service (Coventry) (distributor)	6	360			Distributor
Royal Surrey County Hospital NHS Trust Royal Surrey County Hospital (uk procure)	6	106		109	Ukprocure
Lancashire Teaching Hospital NHS Foundation Trust Chorley & South Ribble Hospital (integra)	6	89		33	Integra
NHS Supply Chain (e-direct)	5	2165		386	NHSSC
Guy's and St Thomas' NHS Foundation Trust Trust Offices (oracle)	5	1556		19	Oracle
Cambridge University Hospitals NHS Foundation Trust Addenbrookes Hospital (oracle)	5	198		45	Oracle
Bunzl Healthcare Ltd (distributor)	5	163		96	Distributor
Darlington PCT Dr Piper House (eros)	5	22		18	EROS
South Gloucestershire PCT 1 Monarch Court, (eros)	5	8			EROS
Alliance Healthcare (Distribution) Ltd. (distributor)	4	131			Distributor
Basingstoke and North Hampshire NHS Foundation Trust (@uk)	4	45	29	15	.@UK
Cambridge University Hospitals NHS Foundation Trust Addenbrookes Hospital (e-direct)	3	10			Oracle
Ashford and St Peter's Hospitals NHS Trust St Peters Hospital (powergate)	2	55			PowerGate
St Helens and Knowsley Hospital NHS Trust Whiston Hospital (sbs)	2	34	27	15	SBS
Sangers (NI) Ltd (distributor)	2	26			Distributor
Highland NHS Board Assynt House (pecos)	2	21			PECOS
Torbay Care Trust Bay House, Unit 2,Riviera Park (sbs)	2	2			SBS
Mayday Healthcare NHS Trust Main Store (powergate)	1	611			PowerGate
Surrey and Borders Partnership NHS Trust (powergate)	1	400			PowerGate
Southampton University Hospitals NHS Trust Southampton General Hospital (sbs)	1	102			SBS
Squadron Medical (distributor)	1	68			Distributor
University College London Hospitals NHS Trust UCLH Trust Headquarters (adb)	1	52			ADB
Dudley Group Of Hospitals NHS Trust Russells Hall Hospital (powergate)	1	49			PowerGate
Clifton Park NHS Treatment Centre (Ramsay Healthcare) Clifton Park NHS Treatment Centre (other)	1	41		36	JDE
Ashtead Hospital (Ramsay Healthcare) Ashtead Hospital (other)	1	37		24	JDE
Park Hill Hospital (Ramsay Healthcare) Park Hill Hospital (other)	1	34		22	JDE
Cwm Taf Local Health Board Prince Charles Hospital (oracle)	1	29		27	Oracle
Tayside NHS Ninewells Hospital and Med School, Level 9 (pecos)	1	29			PECOS
Yorkshire Clinic (Ramsay Healthcare) Yorkshire Clinic (other)	1	26		23	JDE

## E-TRADING STATISTICS – FEBRUARY 2010 (EXCLUDING PHARMACY)

ORGANISATIONS	T/R	ORD	INV	CNF	TYPE
Rivers Hospital (Ramsay Healthcare) Rivers Hospital (other)	1	25		20	JDE
Nottingham Woodthorpe Hospital (Ramsay Healthcare) Nottingham Woodthorpe Hospital (other)	1	24		21	JDE
Euxton Hall Hospital (Ramsay Healthcare) Euxton Hall Hospital (other)	1	20		19	JDE
North Downs Hospital (Ramsay Healthcare) North Downs Hospital (other)	1	19		17	JDE
Woodland Hospital (Ramsay Healthcare) Woodland Hospital (other)	1	19		15	JDE
Renacres Hospital (Ramsay Healthcare) Renacres Hospital (other)	1	15		14	JDE
Reading Hospital (Ramsay Healthcare) Reading Hospital (other)	1	13		10	JDE
Springfield Hospital (Ramsay Healthcare) Springfield Hospital (other)	1	13		6	JDE
Kendal NHS Treatment Centre (Ramsay Healthcare) Westmorland General Hospital (other)	1	8		3	JDE
Mount Stuart Hospital (Ramsay Healthcare) Mount Stuart Hospital (other)	1	8		6	JDE
Fitzwilliam Hospital (Ramsay Healthcare) Fitzwilliam Hospital (other)	1	7		5	JDE
Hartlepool PCT Mandale House (eros)	1	6		12	EROS
Duchy Hospital (Ramsay Healthcare) Duchy Hospital (other)	1	5		5	JDE
West Midlands Hospital (Ramsay Healthcare) West Midlands Hospital (other)	1	5		3	JDE
Redcar and Cleveland PCT Riverside House (eros)	1	3		2	EROS
Oaklands Hospital (Ramsay Healthcare) Oaklands Hospital (other)	1	3		2	JDE
Oaks Hospital (Ramsay Healthcare) Oaks Hospital (other)	1	3		3	JDE
Winfield Hospital (Ramsay Healthcare) (other)	1	3		3	JDE
Tees, Esk & Wear Valleys NHS Trust (eros)	1	2			EROS
Tees Valley NHS Treatment Centre (Ramsay Healthcare) One Life Building (other)	1	2		2	JDE
Fulwood Hall Hospital (Ramsay Healthcare) Fulwood Hall Hospital (other)	1	1		1	JDE
New Hall Hospital (Ramsay Healthcare) New Hall Hospital (other)	1	1		1	JDE
Pinehill Hospital (Ramsay Healthcare) Pinehill Hospital (other)	1	1		1	JDE
Rowley Hospital (Ramsay Healthcare) Rowley Hospital (other)	1	1			JDE
NHS Supply Chain (Alfreton) (distributor)			4388		Distributor
5 Boroughs Partnership NHS Trust Hollins Park Hospital (sbs)			1		SBS
Bradford and Airedale Teaching PCT Douglas Mill (sbs)			1		SBS
East Cheshire NHS Trust Macclesfield District Gen Hospital (sbs)			1		SBS
Nottinghamshire County Teaching PCT (sbs)			1		SBS
The Lewisham Hospital NHS Trust University Hospital Lewisham (sbs)			2		SBS
Western Cheshire PCT 1829 Building,The Countess Of Chester Health Park (sbs)			3		SBS
Whipps Cross University Hospital NHS Trust Whipps Cross Hospital (sbs)			11		SBS
South London Healthcare NHS Trust (sbs)			12		SBS
Barking, Havering and Redbridge Hospitals NHS Trust Queens Hospital (sbs)			14		SBS
Winchester and Eastleigh Healthcare NHS Trust Royal Hampshire County Hospital (sbs)			16		SBS
North Cheshire Hospitals Trust (sbs)			17		SBS
Ashford and St Peter's Hospitals NHS Trust St Peters Hospital (sbs)			18		SBS

**E-TRADING STATISTICS – FEBRUARY 2010**  
(EXCLUDING PHARMACY)

ORGANISATIONS	T/R	ORD	INV	CNF	TYPE
Bradford Teaching Hospitals NHS Foundation Trust Bradford Royal Infirmary (sbs)			22		SBS
Surrey and Sussex Healthcare NHS Trust East Surrey Hospital (sbs)			24		SBS
North Bristol NHS Trust Frenchay Hospital (sbs)			67		SBS
East and North Hertfordshire NHS Trust Lister Hospital (sbs)			123		SBS
Portsmouth Hospitals NHS Trust De La Court House (sbs)			123		SBS

**E-TRADING STATISTICS – FEBRUARY 2010**  
(EXCLUDING PHARMACY)

**GLOSSARY**

**T/R** This column represents the total number of active Trading Relationships for the current month.

**ORD** This column represents the total number of Purchase Orders for the current month.

**INV** This column represents the total number of Invoices for the current month.

**CNF** This column represents the total number of Order Confirmation messages for the current month.

**TYPE**

For Suppliers this column shows the method used to deliver the electronic documents.

- eLink - The document is sent to the recipients system in an agreed Business to Business (B2B) format e.g. XML.
- eLink-ASN - The e-Link supplier also sends back electronic Shipping Notes (ASNs)
- eMail - The document is e-mailed to the recipient in a readable format (PDF).
- GXS - The document is forwarded via the EDI value added network: GXS Tradanet, in an agreed EDI format e.g. TRADACOMS.

For Customers this column shows the Purchasing/Finance System being used.