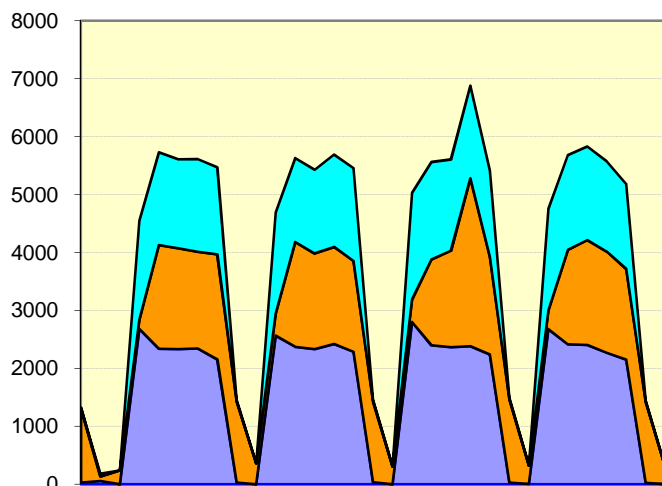
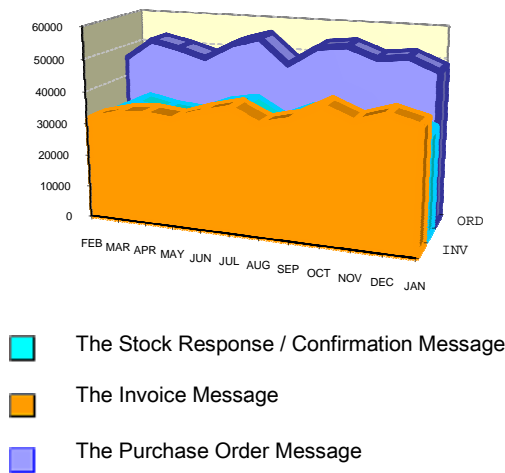


## E-TRADING STATISTICS – JANUARY 2010

TRANSACTIONS PER DAY



GROWTH



These two charts illustrate the volume of traffic passing through the Pharmacy Messaging Service.

## E-TRADING STATISTICS – JANUARY 2010

### ACTIVE SUPPLIERS

*See the notes at the end of this document, for an explanation of what the values represent.*

ORGANISATIONS	T/R	ORD	INV	CNF	TYPE
10050 - Alliance Healthcare (Distribution) Ltd.	257	16799	18517	16796	eLink
10057 - Baxter Healthcare Ltd	187	2196	867		eLink
10059 - Janssen Cilag Ltd	158	1162			eLink*
10051 - Mawdsley Brooks	107	4791	3642	3325	eLink
10067 - AAH Hospital Service (Coventry)	83	7954	11639	7952	eLink
10063 - Roche Products Ltd	83	901	173		eLink*
10409 - Hameln Pharmaceuticals Ltd	75	383	26	337	eLink
10054 - Novartis Pharmaceuticals UK Ltd	72	712			eLink
10066 - Phoenix Healthcare Distribution Ltd	71	3136	2771	3125	eLink
10883 - Ranbaxy UK Ltd	69	361	261	165	eLink
10352 - Rosement Pharmaceuticals Ltd	68	555			eMail
10289 - Waymade Healthcare Plc	56	256			eMail
10121 - Abbott Laboratories Ltd	55	378	10		GXS+eMail
10068 - Bristol Myers Squibb Pharma Ltd	53	195	5		GXS+eMail
10082 - Fresenius Kabi Ltd	52	535			eLink
10089 - UDG	45	632			GXS+eMail
10301 - IDIS Ltd	45	197			eLink*
11075 - Focus Pharmaceuticals	45	194			eMail
10192 - Amgen Ltd	44	201			GXS+eMail
10204 - Healthcare Logistics	43	381			GXS+eMail
10280 - Nova Laboratories Ltd	42	274			eMail
10060 - Eli Lilly and Co Ltd	42	181			GXS+eMail
10076 - Boehringer Ingelheim Ltd	41	126	10		GXS+eMail
10083 - Alcon Laboratories (UK) Ltd	41	112			eMail
10061 - Mayne Pharma	39	243			GXS+eMail
11129 - M & A Pharmachem Ltd	38	150			eMail
10266 - Alliance Pharmaceuticals Ltd	38	89			eMail
10274 - Ferring Pharmaceuticals Ltd	36	105			eMail
10236 - Moorfields Pharmaceuticals	34	135			eMail
10235 - Martindale Pharmaceuticals	34	122			GXS+eMail
10679 - Mawdsleys Pre-Wholesale	33	218			eMail
10277 - Ipsen Ltd	33	52			eMail
11534 - Torbay Pharmacy Manufacturing Unit	32	133			eMail
11030 - Gilead Sciences Ltd	32	124			eMail
10080 - Bracco UK Ltd	31	80			GXS+eMail
10548 - Tillomed Laboratories Ltd	30	75			eMail
10175 - Allergan Ltd	29	74			eMail

## E-TRADING STATISTICS – JANUARY 2010

ORGANISATIONS	T/R	ORD	INV	CNF	TYPE
10411 - Special Products Ltd	28	65			eMail
10285 - Shield Medicare Ltd	28	65			eMail
11984 - Oxford Pharmacy Store	26	220			eMail
10062 - Smith & Nephew Healthcare - Wound Management	26	52			GXS+eMail
10288 - Trinity Pharmaceuticals	25	68			eMail
10087 - Johnson & Johnson Medical Ltd	25	60			eLink
10262 - B. Braun Medical Ltd	24	86			eLink*
11173 - Interport Ltd	24	56			eMail
11573 - Syner-Med	23	42			eMail
10316 - Cambridge Laboratories Ltd	22	48			eMail
10276 - Guerbet Laboratories Ltd	22	42			eMail
10179 - Kent Pharmaceuticals Ltd	19	55	10		GXS+eMail
11185 - Durbin Plc	19	43			eMail
10278 - Maco Pharma UK Ltd	18	123		107	eLink*
11124 - Huddersfield Royal Infirmary, Pharmacy Manufacturing Unit	18	67			eMail
10309 - Baxa Ltd	18	44			eMail
11535 - Vitaline Pharmaceuticals Ltd	18	23			eMail
10090 - Bunzl Healthcare Ltd	17	69			eLink
10085 - Nutricia Ltd	17	68			GXS+eMail
10521 - Covidien (UK) Commercial Ltd	17	42		36	eLink
10238 - Roche Diagnostics	17	38			GXS+eMail
10482 - Aguetant Ltd	16	51			eLink*
10052 - Bayer Schering Pharma	16	38			eMail
10341 - Medisense, Abbott Diagnostics Division	16	38			eMail
10573 - Ivex Pharmaceuticals	16	34			eMail
10542 - BCM Specials (The Boots Company)	16	21			eMail
11634 - GE Healthcare	15	45			eMail
12297 - Bio Products Laboratory	15	42			eMail
10287 - The Specials Laboratory Ltd	15	41			eMail
11089 - Genzyme Therapeutics Ltd	15	41			eMail
10293 - CSL Behring UK Ltd	15	37			eMail
10623 - Midco Print & Packaging Ltd	15	34			eMail
10281 - Octapharma Ltd	15	25			eMail
11548 - Siemens Medical Solutions Diagnostics Europe Ltd	14	27			eMail
10440 - J.M. Loveridge Plc	14	27			eMail
10275 - Grifols UK Ltd	14	16			eMail
10402 - Gambro Lundia AB	12	34			eMail
10526 - Helapet Ltd	12	30			eMail
10599 - Mandeville Medicines	12	25			eMail
10899 - Biotest (UK) Ltd	12	23			eMail

## E-TRADING STATISTICS – JANUARY 2010

ORGANISATIONS	T/R	ORD	INV	CNF	TYPE
10126 - Servier Laboratories	12	19			GXS+eMail
10381 - CliniMed Ltd	11	20			eMail
13326 - Relonchem Ltd.	11	19			eMail
10127 - Henleys Medical Supplies Ltd	11	19			GXS+eMail
10602 - Pierre Fabre Oncology	11	17			eMail
11502 - Stockport NHS Foundation Trust Stepping Hill Hospital, Pharmacy Department	10	23			eMail
11615 - The Ipswich Hospital - Pharmacy Manufacturing Unit	10	21			eMail
10594 - Hospira	9	58			eMail
10318 - Cherwell Laboratories Ltd	9	16			eMail
11539 - Northwick Park Hospital Pharmacy Manufacturing Northwick Park Hospital	9	15			eMail
10084 - Bayer Plc Pharmaceutical Division	8	23			GXS+eMail
10483 - The Tristel Company Ltd	8	18			eMail
13769 - Vifor (care of Syner-Med)	8	16			eMail
10596 - Biomet UK Ltd	8	16			eMail
10188 - Merck Serono Ltd	8	15			eMail
10398 - Codan Ltd	8	9			eMail
10660 - Opal Healthcare Limited	8	9			eMail
10191 - Norchem Ltd	7	358		311	eLink
11916 - Qualasept Ltd trading as Bath ASU	7	31			eMail
13277 - Valley Northern Ltd	7	17			eMail
10291 - WW Medsystems	7	15			eMail
10531 - Guest Medical Ltd	7	13			eMail
10545 - Penn Pharmaceuticals Ltd	7	11			eMail
10189 - Bausch and Lomb (UK) Surgical	7	11			GXS+eMail
10555 - Pharma Nord	7	8			eMail
10598 - Distinctive Medical Products Ltd	7	8			eMail
10622 - Celfix Labels	7	8			eMail
11910 - Eastbourne Manufacturing Unit District General Hospital	6	22			eMail
10407 - TEVA Hospitals	6	17			GXS+eMail
13903 - Accord Healthcare Ltd	6	16			eMail
10086 - Bausch & Lomb	6	14			GXS+eMail
10401 - E-Z-EM (UK) Ltd	6	12			eMail
11745 - Bayer PLC	6	11			eMail
10124 - Britannia Pharmaceuticals Ltd	6	9			eMail
11146 - VWR International Ltd	6	8			eMail
10270 - Merz Pharma	6	8			eMail
12849 - Niche Generics Ltd	6	8			eMail
11189 - Tell Products	6	7			eMail
10652 - Pharmarama International Ltd	5	17			eMail

## E-TRADING STATISTICS – JANUARY 2010

ORGANISATIONS	T/R	ORD	INV	CNF	TYPE
10472 - Diagenics Ltd	5	10			eMail
10537 - Spinks Compak Ltd	5	9			eMail
13555 - Manx Healthcare	5	7			eMail
11540 - St Mary's Pharmaceutical Unit Quadrant Centre	5	7			eMail
11893 - Inspiration Healthcare Ltd	5	6			eMail
11550 - Gladerma (UK) Ltd	5	5			eMail
11046 - Lancashire Teaching Hospitals NHS Foundation Trust Royal Preston Hospital, Pharmacy Department	4	42			eMail
12948 - NHS Supply Chain (Rugby)	4	31			eMail
10200 - East Cheshire NHS Trust Macclesfield District General Hospital, Pharmacy Department	4	22			eMail
13303 - Doncaster (Mawdsleys) Pharmaceuticals	4	19			eMail
11697 - NHS Supply Chain (Bury St. Edmunds)	4	18			eLink
10263 - PPAS (West Hertfordshire Hospitals NHS Trust)	4	17			eLink*
12878 - Actavis	4	11			eMail
10447 - Vitaflo Ltd	4	11			eMail
10439 - Healthcare At Home	4	10			eMail
10122 - Convatec Ltd	4	8			eMail
10259 - Stryker UK Ltd	4	8			eMail
10091 - Vernon-Carus Ltd	4	8			eMail
10475 - Oxford Nutrition Ltd	4	8			eMail
10588 - SKS Healthcare	4	7			eMail
10224 - Vygon UK Ltd	4	6			eLink*
11127 - Lamberts Healthcare Ltd	4	6			eMail
10485 - Pall Medical	4	4			eMail
10724 - Fresenius Medical Care	3	18			eMail
11078 - Coloplast Ltd	3	15			eMail
11532 - Novartis Consumer Health	3	12			eMail
11696 - NHS Supply Chain (Maidstone)	3	10			eLink
13976 - Systagenix (Wound Management)	3	8			eMail
10541 - BHR Pharmaceuticals Ltd	3	7			eMail
10510 - Becton Dickinson UK Ltd	3	6			eMail
13359 - Medlogic Global Ltd	3	5			eMail
10529 - Nestle Clinical Nutrition	3	4			eMail
12916 - Inverness Medical UK Ltd	3	4			eMail
12401 - Neolab Ltd	3	4			eMail
10282 - Quadratech	3	4			eMail
10256 - UCB Pharma Ltd. (formerly Celltech Pharmaceuticals)	3	4			GXS+eMail
11503 - Medical Access Ltd	3	3			eMail
11211 - Kora Healthcare Ltd	3	3			eMail
10283 - Schulke and Mayr	3	3			eMail

## E-TRADING STATISTICS – JANUARY 2010

ORGANISATIONS	T/R	ORD	INV	CNF	TYPE
10604 - Rayner Intraocular Lenses Ltd	3	3			eMail
10624 - Lidco Ltd	3	3			eMail
11520 - Pharmaceutical Packaging (Leeds) Ltd	3	3			eMail
10727 - Biomérieux UK Ltd	3	3			eMail
12908 - University College London Hospitals NHS Trust Pharm Orders					
Pharmacy Main Store	2	210			eLink*
11176 - Sartorius Ltd	2	7			eMail
10331 - Forley Generics / Goldshield Healthcare	2	6			eMail
10982 - Leica Biosystems Peterborough Ltd	2	5			eMail
10709 - AMO UK Ltd	2	5			eMail
10265 - Allergy Therapeutics Ltd	2	5			eMail
10260 - Carefusion UK 306 Ltd (Alaris)	2	5			eMail
11144 - Inverness Medical UK	2	4			eMail
10645 - Euromed Ltd	2	4			eMail
10597 - CP Pharmaceuticals Ltd	2	4			eMail
11142 - Teleflex Medical Ltd	2	4			eMail
10600 - Dr Reddy's	2	3			eMail
11807 - Pulsion Medical UK Ltd Unit C4 Heathrow Corporate Park	2	3			eMail
11158 - Computer Business Forms Ltd	2	3			eMail
11085 - Bio-Tech Solutions Ltd	2	3			eMail
10634 - CME Mckinley Medical UK Ltd	2	3			eMail
10695 - Intersurgical Ltd	2	3			eMail
10396 - Advanced Medical Optics	2	2			eMail
13202 - Geistlich Sons Ltd	2	2			eMail
11786 - Bayer PLC (Diabetes Products)	2	2			eMail
12402 - Eusa Pharma	2	2			eMail
11088 - Envopak Group Ltd	2	2			eMail
10412 - Squadron Medical	2	2			eMail
10442 - About Face Solutions Ltd	2	2			eMail
10273 - Essential Oils Ltd	2	2			eMail
11157 - 3M Health Care Ltd	2	2			eMail
10473 - Fisher Scientific UK Ltd	2	2			eMail
10397 - Sherwood Forest Hospitals NHS Trust Kings Mill Hospital, Pharmacy					
Department	1	23			eMail
11632 - NHS Supply Chain (Alfreton)	1	18			eMail
11659 - KCI Medical Ltd	1	17			eMail
11694 - NHS Supply Chain (Runcorn)	1	16			eLink
10211 - TPS Medical (3rd party distribution)	1	15			eMail
13654 - Mawdsley's Overlabelling	1	14			eMail
10562 - University College London Hospitals NHS Trust Pharmacy Main					
Store	1	7			eLink

## E-TRADING STATISTICS – JANUARY 2010

ORGANISATIONS	T/R	ORD	INV	CNF	TYPE
13278 - Wains Of Tunbridge Wells	1	7			eMail
13041 - Central Homecare Ltd	1	6	12		eLink
12394 - PM Labels	1	5			eMail
13558 - Siemens Healthcare Diagnostics Ltd	1	5			eMail
11128 - Leco Computer Supplies	1	4			eMail
11197 - Advancis	1	4			eMail
13504 - Newcastle Specials NHS Pharmacy Production Unit Royal Victoria Infirmary	1	4			eMail
10465 - P & D Pharmaceuticals Ltd	1	4			eMail
13340 - Genta Medical	1	3			eMail
14028 - MCS Wholesale Ltd	1	3			eMail
10912 - Profile Respiratory System Ltd	1	3			eMail
11516 - Aurum Pharmaceuticals Ltd	1	3			eMail
12852 - Fenwal UK Ltd	1	2			eLink
10513 - Depuy International Ltd	1	2			eLink
11147 - Wyeth Laboratories	1	2			eMail
13368 - JohnsonDiversey UK Ltd	1	2			eMail
10196 - The North West London Hospitals NHS Trust Northwick Park Hospital, Pharmacy Department	1	2			eMail
10404 - Aventis Pasteur MSD	1	2			eMail
11143 - Transmail	1	2			eMail
10544 - Ardern Healthcare Ltd	1	2			eMail
10699 - Paul Hartmann Ltd	1	2			eMail
13588 - Movianto UK Ltd	1	2			eMail
14078 - Thomas Blake	1	2			eMail
11818 - Medichem International (Marketing) Ltd	1	2			eMail
10272 - Edwards Lifesciences Ltd	1	1			eLink*
13414 - GBUK Healthcare	1	1			eMail
10517 - Kimal Plc	1	1			eMail
11175 - Prisym ID	1	1			eMail
11525 - Typharm	1	1			eMail
11528 - Mid-Optic	1	1			eMail
13179 - Abatron Ltd	1	1			eMail
11715 - Owen Mumford Ltd	1	1			eMail
10233 - St George's Healthcare NHS Trust St. George's Hospital, Central Pharmacy Stores	1	1			eMail
11188 - William Hodgson & Co	1	1			eMail
13435 - Anachem Ltd	1	1			eMail
13891 - Aspen Medical Thornhill Road	1	1			eMail
10441 - Biopharm (UK) Ltd	1	1			eMail
10443 - AS Pharma Ltd	1	1			eMail



## E-TRADING STATISTICS – JANUARY 2010

ORGANISATIONS	T/R	ORD	INV	CNF	TYPE
11706 - Micronclean (Newbury) Ltd	1	1			eMail
11788 - Exel	1	1			eMail
11789 - Health Protection Agency I	1	1			eMail
11159 - Henry Schein Procure	1	1			eMail
11135 - Spodefell Ltd (BUFA)	1	1			eMail
10538 - Smith and Nephew Orthopaedics	1	1			eMail
10546 - BioCare Ltd	1	1			eMail
10565 - AGMA Ltd	1	1			eMail
10268 - Axis-Shield Diagnostics Ltd	1	1			eMail
10264 - Advanced Industrial Supplies Ltd	1	1			eMail
13439 - Protech Medical Ltd	1	1			eMail
12201 - J.R. Packaging Supplies	1	1			eMail
12298 - Peskett Solutions Ltd	1	1			eMail
11515 - Alk Abello (UK)	1	1			eMail
11704 - Carefusion UK 306 Ltd	1	1			eMail
12910 - Merck Sharp and Dohme Ltd	1	1			eMail
13200 - Diagnostic Sonar Ltd	1	1			eMail
11668 - Pfertec Pharmaceuticals	1	1			eMail
11903 - Vision Matrix Ltd	1	1			eMail
11905 - Chartrite Ltd	1	1			eMail
10292 - Zeal Clean Supplies	1	1			eMail
10399 - Armstrong Medical Ltd	1	1			eMail
11083 - Medicina Ltd	1	1			eMail
11086 - BR Pharmaceuticals Ltd	1	1			eMail
10705 - Terumo UK	1	1			eMail
10717 - Athrodax Ltd	1	1			eMail
11526 - Macfarlan Smith Ltd	1	1			eMail
11203 - Richards Packaging	1	1			eMail
11392 - BPI Packaging	1	1			eMail
10088 - Banner Business Supplies Ltd	1	1			GXS
10279 - GBUK Healthcare Ltd	1	1			eMail



## E-TRADING STATISTICS – JANUARY 2010

### ACTIVE CUSTOMERS

See the notes at the end of this document, for an explanation of what the values represent.

ORGANISATIONS	T/R	ORD	INV	CNF	TYPE
Norfolk & Norwich University Hospital NHS Trust Norfolk & Norwich University Hospital, Pharmacy Department	109	988	1028	514	PowerGate
Cambridge University Hospitals NHS Foundation Trust Addenbrookes Hospital, Pharmacy Department	104	656	815	354	PowerGate
Royal Liverpool & Broadgreen University Hospitals Trust Royal Liverpool University Hospital, Pharmacy Department	98	815	1052	333	PowerGate
Brighton & Sussex University Hospitals NHS Trust Brighton General Hospital, Pharmacy Department	98	563	919	190	PowerGate
University Hospitals of Leicester NHS Trust Leicester Royal Infirmary, Pharmacy Department	82	1607	2656	722	PowerGate
Worcestershire Acute Hospitals NHS Trust Worcestershire Royal Hospital, Pharmacy Department	77	816	1262	446	PowerGate
Mid Essex Hospital Services NHS Trust Broomfield Hospital, Pharmacy Department	77	535	364	240	PowerGate
Luton and Dunstable Hospital NHS Foundation Trust Luton and Dunstable Hospital, Pharmacy Department	76	417	937	198	PowerGate
The Mid Cheshire Hospitals NHS Trust Leighton Hospital, Pharmacy Department	73	479	305	250	PowerGate
The North West London Hospitals NHS Trust Northwick Park Hospital, Pharmacy Department	73	398	11	149	PowerGate
Sheffield Childrens Hospital NHS Trust Sheffield Children's Hospital, Pharmacy Department	69	353		98	PowerGate
George Eliot Hospital NHS Trust George Eliot Hospital, Pharmacy Department	64	337	784	100	PowerGate
St Helens and Knowsley Hospitals NHS Trust Whiston Hospital, Pharmacy Department	64	314		122	PowerGate
The Ipswich Hospital NHS Trust Ipswich Hospital, Pharmacy Department	62	651	410	358	PowerGate
Western Sussex Hospitals NHS Trust Worthing Hospital, Pharmacy Department	62	309		138	PowerGate
The Queen Elizabeth Hospital King's Lynn NHS Trust Queen Elizabeth Hospital, Pharmacy Department	61	390		139	PowerGate
Wrightington, Wigan and Leigh NHS Foundation Trust Royal Albert Edward Infirmary, Pharmacy Department	60	1151	1587	834	PowerGate
University Hospitals of Morecambe Bay Hospitals NHS Trust Royal Lancaster Infirmary, Pharmacy Department	59	868	1580	434	PowerGate
Southend University Hospital NHS Foundation Trust Southend Hospital, Pharmacy Department	57	595	944	386	PowerGate
The Hillingdon Hospital NHS Trust Hillingdon Hospital, Pharmacy Department	57	550	73	377	PowerGate
Liverpool Heart and Chest Hospital NHS Trust The Cardiothoracic Centre	54	355	6	182	PowerGate

## E-TRADING STATISTICS – JANUARY 2010

ORGANISATIONS	T/R	ORD	INV	CNF	TYPE
Heart of England NHS Foundation Trust Birmingham Heartlands Hospital, Pharmacy Department	52	340	2	160	PowerGate
Kettering General Hospital NHS Trust Kettering General Hospital, Pharmacy Department	52	283	8	129	PowerGate
Hereford Hospitals NHS Trust Hereford County Hospital, Pharmacy Department	51	425	222	226	PowerGate
Sheffield Teaching Hospitals NHS Foundation Trust Northern General Hospital, Pharmacy Department	50	348	5	140	PowerGate
Medway NHS Trust Medway NHS Trust, Pharmacy Department	49	192	530	71	PowerGate
City Hospitals Sunderland NHS Foundation Trust Sunderland Royal Hospital	48	219	19	112	PowerGate
Royal Surrey County Hospital NHS Trust Royal Surrey County Hospital, Pharmacy Department	47	253	2	134	PowerGate
University College London Hospitals NHS Trust Pharmacy Main Store	46	1119	1394	844	PowerGate
United Lincolnshire Hospitals NHS Trust Lincoln County Hospital	46	588	946	339	PowerGate
Salford Royal NHS Foundation Trust Hope Hospital	45	502	658	253	PowerGate
North Middlesex University Hospital NHS Trust Pharmacy Department	45	393	6	206	PowerGate
Milton Keynes Hospital NHS Foundation Trust Milton Keynes General Hospital, Pharmacy Department	43	229	138	92	PowerGate
East and North Hertfordshire NHS Trust QE2 Hospital, Pharmacy Department	42	302	4	201	PowerGate
Alder Hey Children's NHS Foundation Trust Alder Hey Hospital, Pharmacy Dept	40	245	31	114	PowerGate
Central Manchester University Hospitals NHS Foundation Trust Manchester Royal Infirmary, Pharmacy Department	38	764	26	459	PowerGate
The Whittington Hospital NHS Trust Pharmacy Department	38	551	6	211	PowerGate
Royal Free Hampstead NHS Trust Royal Free Hospital, Pharmacy Department	37	442	5	248	PowerGate
The Royal Marsden NHS Foundation Trust Pharmacy Department	36	458		293	PowerGate
South London Healthcare NHS Trust Princess Royal University Hospital, Pharmacy Department	32	322		203	PowerGate
Sandwell and West Birmingham Hospitals NHS Trust Sandwell Hospital, Pharmacy Department	29	464		323	PowerGate
University Hospital Coventry and Warwickshire NHS Trust Walsgrave Hospital, Pharmacy Department	29	291	386	119	PowerGate
East Cheshire NHS Trust Macclesfield District General Hospital, Pharmacy Department	28	421	642	292	PowerGate
St George's Healthcare NHS Trust Pharmacy Stores	28	253	30	104	PowerGate
Dorset County Hospital NHS Foundation Trust Dorset County Hospital, Pharmacy Department	28	159		84	PowerGate
University Hospitals of Leicester NHS Trust Towers Hospital, Pharmacy Department	26	200	330	134	PowerGate
Chelsea and Westminster Hospital NHS Trust Chelsea & Westminster Hospital, Pharmacy Department	25	225		161	PowerGate
Doncaster & Bassetlaw Hospitals NHS Trust Bassetlaw DGH, Pharmacy	23	1124		764	PowerGate

## E-TRADING STATISTICS – JANUARY 2010

ORGANISATIONS	T/R	ORD	INV	CNF	TYPE
Department					
James Paget University Hospitals NHS Foundation Trust James Paget Hospital, Pharmacy Department	23	321		246	PowerGate
East and North Hertfordshire NHS Trust Lister Hospital, Pharmacy Department	22	307	7	196	PowerGate
South Tees Hospitals NHS Trust James Cook University Hospital, Pharmacy Department	21	339	455	269	PowerGate
South Tyneside NHS Foundation Trust South Tyneside District Hospital, Pharmacy Department	21	180	197	139	PowerGate
West Middlesex University Hospital NHS Trust West Middlesex University Hospital, Pharmacy Department	20	419	854	329	PowerGate
Portsmouth Hospitals NHS Trust Queen Alexandra Hospital	20	197	8	167	PowerGate
Newham University Hospital NHS Trust Newham General Hospital	20	50		25	PowerGate
Mersey Care NHS Trust Mossley Hill Hospital	18	100	3	64	PowerGate
West Hertfordshire Hospitals NHS Trust Watford General Hospital, Pharmacy Department	17	350	703	195	PowerGate
Gateshead Health NHS Foundation Trust Queen Elizabeth Hospital, Pharmacy Department	16	383		320	PowerGate
South Glasgow University Hospitals NHS Trust Southern General Hospital, Pharmacy Department	16	218	1093	143	PowerGate
Newcastle Upon Tyne Hospitals NHS Trust Royal Victoria Infirmary, Pharmacy Department	15	1114	2213	957	PowerGate
Poole General Hospital NHS Trust Poole General Hospital, Pharmacy Department	14	253		168	PowerGate
The Shrewsbury and Telford Hospital NHS Trust Royal Shrewsbury Hospital, Pharmacy Department	14	122	140	70	Medecator
Great Ormond Street Hospital NHS Trust Great Ormond Street Hospital, Pharmacy Department	14	113		81	PowerGate
Derby Hospitals NHS Foundation Trust Derby Royal Infirmary, Pharmacy Department	13	432	332	355	PowerGate
Epsom and St Helier University Hospitals NHS Trust St Helier Hospital	13	346	250	220	PowerGate
Oxleas NHS Foundation Trust Pinewood House	13	183		149	PowerGate
Burton Hospitals NHS Trust Queen's Hospital, Pharmacy Department	12	101	2	53	Medecator
Calderdale & Huddersfield NHS Trust Calderdale and Huddersfield Hospitals	11	757	427	622	PowerGate
Southport and Ormskirk Hospital NHS Trust Ormskirk and District General Hospital, Pharmacy Department	11	329	885	287	PowerGate
Ealing Hospital NHS Trust Ealing Hospital, Pharmacy Department	10	328		295	PowerGate
Trafford Healthcare NHS Trust Trafford General Hospital, Pharmacy Department	10	250		202	PowerGate
Royal Bolton Hospital NHS Foundation Trust The Royal Bolton Hospital, Pharmacy Department	10	144	4	108	Medecator
The Claremont Hospital Pharmacy Department	10	44		28	PowerGate
South Tees Hospitals NHS Trust Friarage Hospital, Pharmacy Department	9	144		126	PowerGate

## E-TRADING STATISTICS – JANUARY 2010

ORGANISATIONS	T/R	ORD	INV	CNF	TYPE
Bupa Cromwell Hospital Pharmacy Department	8	495		449	PowerGate
South London & Maudsley NHS Trust Pharmacy Department	8	326		292	PowerGate
Aintree University Hospitals NHS Foundation Trust University Hospital Aintree, Pharmacy Department	8	272	30	237	PowerGate
The Royal Wolverhampton Hospitals NHS Trust New Cross Hospital, Pharmacy Stores	8	240	218	184	Medecator
Barnsley Hospital NHS Foundation Trust Pharmacy Department	8	220		186	PowerGate
West Suffolk Hospitals NHS Trust West Suffolk Hospital, Pharmacy Department	8	159		143	PowerGate
Mid Staffordshire General Hospitals NHS Trust Staffordshire General & Cannock Chase Hospitals	8	143	66	74	Medecator
Lancashire Teaching Hospitals NHS Foundation Trust Royal Preston Hospital, Pharmacy Department	7	349		267	PowerGate
Royal Cornwall Hospitals NHS Trust Royal Cornwall & Treリスケ Hospitals, Pharmacy Department	7	134		91	Medecator
Northampton General Hospital NHS Trust Northampton General Hospital, Pharmacy Dept	7	128	226	107	Medecator
Heatherwood & Wexham Park Hospitals NHS Foundation Trust Heatherwood Hospital, Pharmacy Department	7	73		11	Medecator
Chesterfield Royal Hospital NHS Foundation Trust Chesterfield Royal Hospital, Pharmacy Stores	6	265	314	136	Medecator
Stockport NHS Foundation Trust Stepping Hill Hospital, Pharmacy Dept	6	218	372	176	Medecator
Pennine Acute Hospitals NHS Trust Rochdale Infirmary, Pharmacy Department	6	153		120	PowerGate
Christie Hospital NHS Foundation Trust Christie Hospital, Pharmacy Department	6	150	213	120	PowerGate
The North West London Hospitals NHS Trust Central Middlesex Hospital, Pharmacy Dept	6	118	139	100	Medecator
University Hospital of North Staffordshire NHS Trust City General Hosp & North Stafford Royal Inf, Pharmacy Depar	6	116	307	101	Medecator
Gloucestershire Hospitals NHS Foundation Trust Gloucestershire Royal Hospital, Pharmacy Department	6	78	124	54	Medecator
The Dudley Group of Hospitals NHS Foundation Trust C Block , Russells Hall Hospital	6	74	103	50	Medecator
Wirral University Teaching Hospital NHS Foundation Trust Clatterbridge Hospital, District Pharmaceutical Stores	6	72		16	Medecator
Northern Health and Social Care Trust Antrim Area Hospital, Pharmacy Department	6	67	19	22	Medecator
Maidstone and Tunbridge Wells NHS Trust Maidstone District General Hospital, Acute Wing Pharmacy Dep	6	67	112	60	Medecator
Ceredigion & Mid Wales NHS Trust Bronglais District General Hospital, The Pharmacy Department	6	60	182	50	Medecator
Cardiff and Vale NHS Trust Llandough Hospital, The Pharmacy Dept	6	58	88	41	Medecator

## E-TRADING STATISTICS – JANUARY 2010

ORGANISATIONS	T/R	ORD	INV	CNF	TYPE
Leeds Teaching Hospitals NHS Trust LMHT The Mount, Pharmacy Department	5	539	13	415	Medecator
Imperial College Healthcare NHS Trust St Mary's & Western Eye Hospitals, Pharmacy Stores Departmen	5	284	1	233	Medecator
York Hospitals NHS Foundation Trust York Hospital, The Pharmacy Department	5	220		180	Medecator
Frimley Park Hospital NHS Foundation Trust Frimley Park Hospital, Pharmacy Department	5	218	355	94	Medecator
King's College Hospital NHS Foundation Trust King's College Hospital, Pharmacy Department	5	184	151	108	Medecator
Pennine Acute Hospitals NHS Trust Fairfield General Hospital, Pharmacy Department	5	163	27	128	Medecator
Northern Lincolnshire & Goole Hospitals NHS Foundation Trust Scunthorpe General Hospital, Pharmacy Department	5	148		124	Medecator
Sherwood Forest Hospitals NHS Trust Sherwood Forest Hospital, Pharmacy Department	5	109	2	88	Medecator
Princess Elizabeth Hospital The Pharmacy Department	5	78	32	63	Medecator
Mayday Healthcare NHS Trust Pharmacy Department	5	68		39	PowerGate
Berkshire Healthcare NHS Trust Prospect Park Hospital, Pharmacy Department	5	53		42	PowerGate
Maidstone and Tunbridge Wells NHS Trust Kent & Sussex Hospital, Pharmacy Department	5	37	7	34	Medecator
Heatherwood & Wexham Park Hospitals NHS Foundation Trust Wexham Park Hospital, Pharmacy Dept	5	20		2	Medecator
Barking, Havering and Redbridge Hospitals NHS Trust Queens Hospital	4	409	320	391	PowerGate
United Bristol Healthcare NHS Trust	4	384	492	317	Medecator
The Princess Alexandra Hospital NHS Trust Princess Alexandra Hospital, Pharmacy Department	4	365	524	347	Medecator
Barts and The London NHS Trust Trust Offices, Whitechapel	4	363		280	Medecator
Royal Brompton and Harefield NHS Trust Royal Brompton & Harefield Hospitals, Pharmacy Department	4	180	7	150	Medecator
Aneurin Bevan Local Health Board Royal Gwent Hospital, The Pharmacy Department	4	180	291	172	Medecator
Pennine Acute Hospitals NHS Trust North Manchester General Hospital, Pharmaceutical Department	4	172		130	Medecator
Pennine Acute Hospitals NHS Trust Royal Oldham Hospital, Pharmacy Department	4	154	174	118	Medecator
Surrey and Sussex Healthcare NHS Trust East Surrey Hospital, Pharmacy Dept	4	142		137	PowerGate
Guys and St Thomas NHS Foundation Trust St Thomas & Guy's Hosp, Pharmacy Department	4	137		102	Medecator
Oxford Radcliffe Hospitals NHS Trust Churchill Hospital, Pharmacy Department	4	120	6	98	PowerGate

## E-TRADING STATISTICS – JANUARY 2010

ORGANISATIONS	T/R	ORD	INV	CNF	TYPE
Blackpool, Fylde And Wyre Hospitals NHS Trust Victoria Hospital, Pharmaceutical Department	4	116		93	Medecator
The Lewisham Hospital NHS Trust Pharmacy Department	4	114	210	95	Medecator
United Lincolnshire Hospitals NHS Trust Pilgrim Hospital, Pharmacy Department	4	109		97	Medecator
Rotherham NHS Foundation Trust Rotherham District General Hospital, Pharmacy Department	4	95		77	Medecator
East Kent Hospitals University NHS Foundation Trust Kent and Canterbury Hospital	4	94	528	91	Medecator
Papworth Hospital NHS Foundation Trust Papworth Hospital, Pharmacy Department	4	84	58	71	Medecator
Airedale NHS Trust Airedale General Hospital, The Pharmacy Stores	4	77	83	58	Medecator
Carmarthenshire NHS Trust Prince Philip Hospital, The Pharmacy Department	4	61	124	56	Medecator
Queen Mary's Sidcup NHS Trust Queen Mary's Hospital, The Pharmacy Stores	4	57		52	Medecator
Cwm Taf NHS Trust Llwynypia Hospital, The Pharmacy Department	4	52	115	48	Medecator
South London Healthcare NHS Trust Queen Elizabeth Hospital, Pharmacy	4	44		35	Medecator
The Newry and Mourne Health & Social Services Trust Daisy Hill Hospital, Pharmacy Department	4	34		14	Medecator
Maidstone and Tunbridge Wells NHS Trust Pembury Hospital	4	24		19	Medecator
Northumbria Healthcare NHS Trust North Tyneside General Hospital, Pharmacy Department	3	957	361	932	PowerGate
Royal Devon and Exeter NHS Foundation Trust Wonford Hospital, Pharmacy Department	3	200		150	Medecator
Walsall Hospitals NHS Trust Manor Hospital, Pharmacy Department	3	127	175	107	Medecator
Norfolk & Waveney Mental Health Partnership NHS Trust Hellesdon Hospital, Pharmacy Department	3	117		117	PowerGate
Fife Healthcare Supplies Queen Margaret Hospital, Pharmacy Department	3	114		112	Medecator
North Cumbria Acute Hospitals NHS Trust West Cumberland Hospital, Pharmaceutical Department	3	107	32	100	Medecator
Tayside NHS Ninewells Hospital, Area Pharmaceutical Stores	3	103		90	Medecator
Swansea NHS Trust Singleton Hospital, The Pharmacy Department	3	103	243	87	Medecator
Peterborough and Stamford Hospitals NHS Foundation Trust Edith Cavell Hospital, The Pharmacy Department	3	98		88	Medecator
Cwm Taf Local Health Board Prince Charles Hospital , The Pharmacy Department	3	90	171	81	Medecator
University Hospital of South Manchester NHS Foundation Trust Wythenshawe Hospital, Pharmaceutical Department	3	85		58	Medecator
Cardiff and Vale NHS Trust University Hospital of Wales Pharmacy	3	74	135	61	Medecator
The London Clinic Pharmacy Department	3	73		54	Medecator
Dartford and Gravesham NHS Trust Darent Valley Hospital, The Pharmacy Department	3	67	165	57	Medecator



## E-TRADING STATISTICS – JANUARY 2010

ORGANISATIONS	T/R	ORD	INV	CNF	TYPE
Belfast Health and Social Care Trust Mater Hospital, Pharmacy Department	3	67		25	Medecator
North West Wales NHS Trust Ysbyty Gwynedd, Pharmaceutical Dept	3	65	159	52	Medecator
South Devon Healthcare NHS Trust Torbay District General Hospital, Pharmacy Dept	3	61	130	37	Medecator
Lothian NHS Western General Hospital, Pharmacy Department	3	60		37	Medecator
Lothian NHS Royal Infirmary of Edinburgh, Pharmacy Department	3	59	93	52	Medecator
Fife Healthcare Supplies Victoria Hospital, Pharmacy Department	3	57		47	Medecator
North Bristol NHS Trust Southmead Hospital, Pharmacy Department	3	56		44	Medecator
Pontypridd & Rhondda NHS Trust Royal Glamorgan Hospital, Pharmacy Department	3	54	174	47	Medecator
North Hampshire Hospitals NHS Trust Basingstoke Hospital, Pharmacy Department	3	53		47	Medecator
North Bristol NHS Trust Frenchay Hospital, The Pharmacy Department	3	51		40	Medecator
Salisbury NHS Foundation Trust Salisbury District Hospital, The Pharmacy Department	3	48		39	Medecator
Western Health and Social Care Trust Altnagelvin Hospital, Pharmacy Department	3	46		23	Medecator
Abertawe Bro Morgannwg University Local Health Board Princess of Wales Hospital, Pharmacy Department	3	46	156	39	Medecator
Belfast Health and Social Care Trust Belfast City Hospital, Pharmacy Dept	3	44		26	Medecator
South Eastern Health and Social Care Trust The Ulster Hospital, Pharmacy Department	3	42		25	Medecator
Belfast Health and Social Care Trust Royal Victoria Hospital, Pharmacy Administration	3	38		33	Medecator
Carmarthenshire NHS Trust West Wales General Hospital, Pharmacy Department	3	38	101	31	Medecator
Ashford and St Peter's Hospitals NHS Trust St Peter's Hospital, Pharmacy Department	3	34		26	Medecator
Abertawe Bro Morgannwg University Local Health Board Neath Port Talbot Hospital, Pharmacy Department	3	34	152	27	Medecator
Northern Health and Social Care Trust Causeway Hospital, Pharmaceutical Department	3	32		14	Medecator
North Wales NHS Trust Glan Clwyd Hospital, Pharmaceutical Department	3	28	123	20	Medecator
Gloucestershire Hospitals NHS Foundation Trust Stroud General Hospital, Pharmacy Department	3	26	46	20	Medecator
Northern Health & Social Care Trust Whiteabbey Hospital, Pharmacy Department	3	11	6	3	Medecator
Woodland Hospital (Ramsay Healthcare) Pharmacy Department	3	10		8	Medecator
Lloyds Pharmacy at Royal Blackburn Lloyds Pharmacy	3	10		3	Medecator
Pembrokeshire and Derwen NHS Trust Withybush General Hospital, Pharmacy Department	3	10	2	2	Medecator
North Cumbria University Hospitals NHS Trust Cumberland Infirmary, Pharmacy Department	2	173		173	Medecator



## E-TRADING STATISTICS – JANUARY 2010

ORGANISATIONS	T/R	ORD	INV	CNF	TYPE
Hospital Of St John and St Elizabeth Pharmacy Department	2	109		109	PowerGate
NHS Forth Valley Stirling Royal Infirmary, Pharmacy Department	2	93		87	Medecator
Countess of Chester Hospital NHS Foundation Trust Countess of Chester Hospital	2	85		80	PowerGate
Hinchingbrooke Health Care NHS Trust Hinchingbrooke Hospital, Pharmacy Department	2	83		78	Medecator
East Lancashire Hospitals NHS Trust Burnley General Hospital, Pharmaceutical Department	2	74		70	Medecator
Lanarkshire NHS Wishaw General Hospital, Pharmacy Department	2	73		68	Medecator
Bradford Teaching Hospitals NHS Foundation Trust Bradford Royal Infirmary, District Pharmaceutical Store	2	59		36	Medecator
Lanarkshire NHS Monklands Hospital, Pharmacy Department	2	59		52	Medecator
United Lincolnshire Hospitals NHS Trust Grantham and District Hospital, Pharmacy Department	2	58		58	Medecator
North East Wales NHS Trust Wrexham Maelor Hospital, Pharmaceutical Department	2	54	98	48	Medecator
The Wellington Hospital (HCA International) Pharmacy Department	2	53	70	41	Medecator
Northern Devon Healthcare NHS Trust North Devon District Hospital, Pharmacy Dept	2	52	124	46	Medecator
Lanarkshire NHS Hairmyres Hospital, Pharmacy Department	2	50		45	Medecator
East Kent Hospitals University NHS Foundation Trust Queen Elizabeth the Queen Mother Hospital	2	49	90	47	Medecator
Great Western Hospitals NHS Foundation Trust The Great Western Hospital, Pharmacy Department	2	45		37	Medecator
Cardiff and Vale NHS Trust Whitchurch Hospital, The Pharmacy Department	2	44		38	Medecator
East Kent Hospitals University NHS Foundation Trust William Harvey Hospital	2	42	87	40	Medecator
Grampian NHS Aberdeen Royal Infirmary	2	42		42	Medecator
Royal Bournemouth & Christchurch Hosp NHS Found Trust Bournemouth General & Christchurch Hosp, Pharmacy Department	2	42		41	Medecator
The London Independent Hospital (BMI) Pharmacy Department	2	38		31	Medecator
The Harley Street Clinic (HCA International) Pharmacy Department	2	38	56	28	Medecator
Nottingham University Hospitals NHS Trust Queen's Medical Centre, Pharmacy Department	2	36		32	PowerGate
The Chiltern Hospital (BMI) Pharmacy Department	2	32		27	Medecator
The Princess Margaret Hospital (BMI) Pharmacy Department	2	31		30	Medecator
Yorkshire Clinic (Ramsay Healthcare) Clinic Pharmacy	2	30		30	Medecator
The Highfield Hospital (BMI) Pharmacy Department	2	30		25	Medecator
Ashtead Hospital (Ramsay Healthcare) Pharmacy Department	2	29		29	Medecator
The Park Hospital (BMI) Pharmacy Department	2	29		20	Medecator
Mount Alvernia Hospital (BMI) Pharmacy Department	2	29		25	Medecator
London Bridge Hospital (HCA International) Pharmacy Department	2	28	38	20	Medecator
Springfield Medical Centre (Ramsay Healthcare) Pharmacy Department	2	27		25	Medecator

## E-TRADING STATISTICS – JANUARY 2010

ORGANISATIONS	T/R	ORD	INV	CNF	TYPE
The Saxon Clinic (BMI) Pharmacy Department	2	25		19	Medecator
The Winterbourne Hospital (BMI) Amicus Healthcare Ltd c/o Winterbourne Hospital	2	25		20	Medecator
Northern Health and Social Care Trust Mid-Ulster Hospital, Pharmacy Department	2	24	6	18	Medecator
Craigavon Area Hospital Group Trust Craigavon Area Hospital, Pharmacy Department	2	24		15	Medecator
The Beaumont Hospital (BMI) Pharmacy Department	2	23		17	Medecator
The Portland Hospital (HCA International) Pharmacy Department	2	23	34	16	Medecator
The Hampshire Clinic (BMI) Pharmacy Department	2	23		19	Medecator
Chelsfield Park Hospital (BMI) Pharmacy Department	2	23		21	Medecator
The Princess Grace Hospital (HCA International) Pharmacy Department	2	23	48	21	Medecator
Three Shires Hospital (BMI) Pharmacy Department	2	22		17	Medecator
Green Park Healthcare Trust Musgrave Park Hospital, Pharmacy Deptment	2	21		15	Medecator
The Priory Hospital (BMI) - Pharmacy Pharmacy Department	2	21		15	Medecator
The Harbour Hospital (BMI) Pharmacy Department	2	20	8	12	Medecator
Harrogate and District NHS Foundation Trust Harrogate District Hospital, Pharmacy Stores	2	20			Medecator
The Beardwood Hospital (BMI) Pharmacy Department	2	18		13	Medecator
Velindre NHS Trust Velindre Hospital, Pharmacy Department	2	18	6	13	Medecator
The Droitwich Spa Hospital (BMI) Pharmacy Department	2	17		16	Medecator
Bishops Wood Hospital (BMI) - Pharmacy Pharmacy Department	2	16		9	Medecator
Shirley Oaks Hospital (BMI) Pharmacy Department	2	16		14	Medecator
The Blackheath Hospital (BMI) Pharmacy Department	2	16		11	Medecator
The Sloane Hospital (BMI) Pharmacy Department	2	15		14	Medecator
Sarum Road Hospital (BMI) Pharmacy Department	2	15		10	Medecator
Albyn Hospital (BMI) Pharmacy Department	2	14	3	13	Medecator
McIndoe Surgical Centre (BMI) Pharmacy Department	2	11		6	Medecator
The Clementine Churchill Hospital (BMI) Pharmacy Department	2	10	17	1	Medecator
Bath Clinic (BMI) Pharmacy Department	2	10		6	Medecator
Kensington and Chelsea PCT St Charles Hospital, Pharmacy Department	2	9	15	7	Medecator
The Chaucer Hospital (BMI) Pharmacy Department	2	9		1	Medecator
Pinehill Hospital (Ramsay Healthcare) Pharmacy Department	2	8		7	Medecator
Thornbury Hospital (BMI) Pharmacy Department	2	7		5	Medecator
The Manor Hospital (BMI) Pharmacy Department	2	7		3	Medecator
The Priory Hospital (BMI) - Materials Materials Department	2	6			Medecator
Barnet & Chase Farm Hospitals NHS Trust Barnet General Hospital, Pharmacy Department	1	145		145	Medecator
The Alexandra Hospital (BMI) Pharmacy Department	1	110		110	Medecator
Dumfries & Galloway NHS Dumfries & Galloway Royal Infirmary, Pharmacy Department	1	101		101	Medecator

## E-TRADING STATISTICS – JANUARY 2010

ORGANISATIONS	T/R	ORD	INV	CNF	TYPE
Aneurin Bevan Local Health Board Nevill Hall Hospital	1	97	200	97	Medecator
Essex Rivers Healthcare NHS Trust Colchester Gen, Clacton, Essex County Hosp	1	66		55	Medecator
Warrington and Halton Hospitals NHS Foundation Trust Warrington Hospital	1	64		64	PowerGate
Yeovil District Hospital NHS Foundation Trust Yeovil District Hospital, Pharmacy Department	1	44	116	44	Medecator
Lothian NHS MacKinnon House Hospital, Pharmacy Department	1	39		39	Medecator
Kingston Hospital NHS Trust Kingston Hospital, The Pharmacy Department	1	32		32	Medecator
Rossdale & Partners (supplier)	1	31		31	(supplier)
Thomas Rivers Medical Centre (Ramsay Healthcare) Pharmacy Department	1	27		27	Medecator
Ross Hall Hospital (BMI) Pharmacy Department	1	21		21	Medecator
The Shrewsbury and Telford Hospital NHS Trust Princess Royal Hospital, Pharmacy Department	1	20	104	20	Medecator
Dorset Healthcare NHS Foundation Trust St Ann's Hospital, Pharmacy Department	1	17		17	Medecator
The Somerfield Hospital (BMI) Pharmacy Department	1	12		12	Medecator
Lothian NHS Roodlands Hospital, Pharmacy Department	1	12		12	Medecator
Goring Hall Hospital (BMI) Pharmacy Department	1	11		11	Medecator
Lancashire Care NHS Foundation Trust Queens Park Hospital, Pharmacy Department	1	10	8	10	Medecator
The Esperance Hospital (BMI) Pharmacy Department	1	10		10	Medecator
East Sussex Hospitals NHS Trust Eastbourne District General Hospital	1	9			Medecator
Mount Stuart Hospital (Ramsay Healthcare) Pharmacy Department	1	8		8	Medecator
Royal United Hospital Bath NHS Trust Royal United Hospital Bath, Pharmacy Stores	1	8	125		Medecator
NHS Greater Glasgow & Clyde Pharmacy Distribution Centre	1	8		8	Medecator
East Sussex Hospitals NHS Trust Conquest Hospital, Pharmacy Department	1	7			Medecator
The Ridgeway Hospital (BMI) Pharmacy Department	1	7			Medecator
Fawkham Manor Hospital (BMI) Pharmacy Department	1	6		6	Medecator
HMP Pentonville	1	6		6	Medecator
Gloucestershire Hospitals NHS Foundation Trust Cheltenham General Hospital, The Pharmacy Department	1	5	105		Medecator
Winfield Hospital (Ramsay Healthcare) Pharmacy Department	1	4		4	Medecator
Nottingham Woodthorpe Hospital (Ramsay Healthcare) Nottingham Woodthorpe Hospital	1	4	5		Medecator
Lloyds Pharmacy at Royal Liverpool Hospital	1	3		3	Medecator
Jersey General Hospital The Pharmacy Department	1	3			Medecator
NHS Western Isles Western Isles Hospital, Pharmacy Department	1	3			Medecator
Reading Hospital (Ramsay Healthcare) Pharmacy Department	1	3		3	Medecator
Belfast Health and Social Care Trust Knockbracken Healthcare Park	1	2			Medecator
The Lister Hospital (HCA International) Pharmacy Department	1	1	13	1	Medecator

## **E-TRADING STATISTICS – JANUARY 2010**

### **GLOSSARY**

**T/R** This column represents the total number of active Trading Relationships for the current month.

**ORD** This column represents the total number of Purchase Orders for the current month.

**INV** This column represents the total number of Invoices for the current month.

**CNF** This column represents the total number of Order Confirmation messages for the current month.

### **TYPE**

For Suppliers this column shows the method used to deliver the electronic documents.

- eLink - The document is sent to the recipients system in an agreed Business to Business (B2B) format e.g. XML.
- eLink\* - Denotes an e-Link supplier who receives e-orders but does not currently send e-invoices directly via PMS.
- eMail - The document is e-mailed to the recipient in a readable format (PDF).
- GXS - The document is forwarded via the EDI value added network: GXS Tradanet, in an agreed EDI format e.g. TRADACOMS.

For Customers this column shows the front-end system used by the Hospital Pharmacy i.e.

- PowerGate
- Medecator