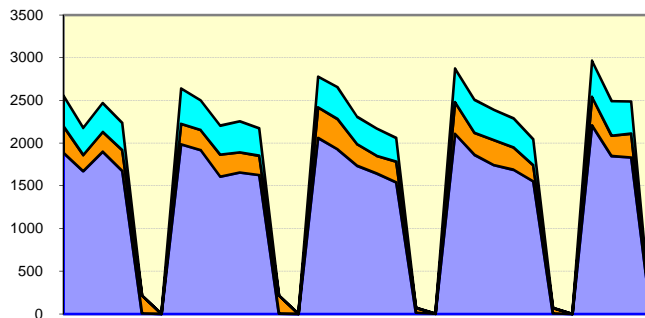
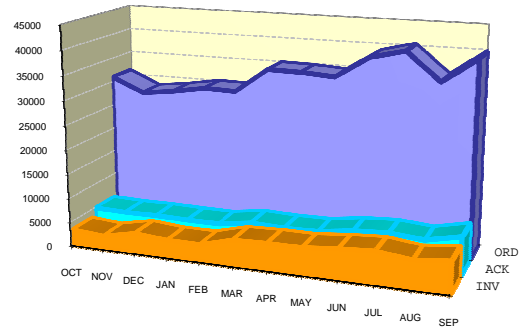


## E-TRADING STATISTICS – SEPTEMBER 2009 (EXCLUDING PHARMACY)

**TRANSACTIONS PER DAY**



**GROWTH**



- The Stock Response / Confirmation Message
- The Invoice Message
- The Purchase Order Message

These two charts illustrate the volume of traffic passing through the GHX Exchange.

## E-TRADING STATISTICS – SEPTEMBER 2009 (EXCLUDING PHARMACY)

### ACTIVE SELLING ORGANISATIONS

*See the notes at the end of this document, for an explanation of what the values represent.*

ORGANISATIONS	T/R	ORD	INV	CNF	TYPE
10087 - Johnson & Johnson Medical Ltd	173	3422	163		eLink
10521 - Covidien (UK) Commercial Ltd	159	2262	1488	4372	eLink
10513 - Depuy International Ltd	48	1179		1044	eLink
10511 - Boston Scientific Ltd	32	1359	642	885	eLink
10518 - Medtronic Ltd	32	950		1180	eLink
10509 - Bard Ltd	32	653	98		eLink
10262 - B. Braun Medical Ltd	30	490			eLink
10224 - Vygon UK Ltd	26	417	11		eLink
10090 - Bunzl Healthcare Ltd	22	4925	2508		eLink
10127 - Henleys Medical Supplies Ltd	22	207			eMail
10259 - Stryker UK Ltd	21	637		25	eLink
10705 - Terumo UK	21	239			eMail
10742 - Cook UK Ltd	20	691			eMail
10057 - Baxter Healthcare Ltd	20	331			eLink
10678 - Zimmer Ltd	20	317			eMail
10695 - Intersurgical Ltd	20	257			eMail
10507 - Arizant UK	20	149			eMail
10272 - Edwards Lifesciences Ltd	19	210		137	eLink
10229 - Rocket Medical PLC	19	134			eMail
10691 - Cory Brothers	18	174			eMail
11078 - Coloplast Ltd	17	107			eMail
10791 - Mana-Tech Ltd	17	91			eMail
10984 - Synthes Stratec Medical Ltd	16	437			eMail
10789 - Conmed Linvatec UK Ltd	16	161			eMail
10510 - Becton Dickinson UK Ltd	16	143			eMail
10305 - Physio Med Services Ltd	16	75			eMail
10651 - Altomed Ltd	16	68			eMail
10701 - Sunlight Clinical Solutions	15	298			eMail
10121 - Abbott Laboratories Ltd	15	158			eMail
10596 - Biomet UK Ltd	15	150			eMail
10082 - Fresenius Kabi Ltd	15	111			eLink
10708 - Alexandra Plc	14	507			eMail
11646 - Smith & Nephew Endoscopy	14	235			eMail
10633 - Molnlycke Health Care Ltd	14	170		99	eLink
10781 - Intavent Orthofix Ltd	14	115			eMail
10755 - Flexicare Medical	14	86			eMail
10716 - Astra Tech Ltd	14	80			eMail

## E-TRADING STATISTICS – SEPTEMBER 2009 (EXCLUDING PHARMACY)

ORGANISATIONS	T/R	ORD	INV	CNF	TYPE
10997 - Vernacare Ltd	14	72			eMail
10692 - Daniels Healthcare	14	47			eMail
11608 - St Jude Medical UK Ltd	13	179			eMail
10713 - Arthrocare UK Ltd	13	104			eMail
10517 - Kimal Plc	13	87			eLink
10779 - Hospital Metalcraft Ltd	13	76			eMail
11809 - Fisher & Paykel Healthcare Ltd	13	69			eMail
11708 - Kapitex Healthcare Ltd	13	66			eMail
10402 - Gambro Lundia AB	13	59			eMail
11812 - UK Medical Ltd	13	44			eMail
10286 - Summit Medical Ltd	13	39			eMail
10415 - Trulife Ltd	12	331			eMail
10410 - Oxoid Ltd	12	62			eMail
10727 - Biomérieux UK Ltd	12	62			eMail
10696 - Unomedical Limited	12	60			eMail
10697 - Medasil (Surgical) Ltd	12	48			eMail
10792 - Medgraphics	12	34			eMail
11142 - Teleflex Medical Ltd	11	99			eMail
10989 - Timesco of London	11	95			eMail
10315 - BSN Medical Ltd	11	87			eMail
10756 - Forth Medical Ltd	11	83			eMail
10467 - Sunrise Medical Ltd	11	79			eMail
11662 - Draeger Medical Ltd	11	78			eMail
10793 - Medi UK Ltd	11	74			eMail
10405 - Health Edge Solutions Ltd	11	61			eMail
11545 - Merit Medical UK Ltd	11	57			eMail
10988 - Therapy Equipment Ltd	11	43			eMail
10754 - Eurosurgical Ltd	11	24			eMail
10412 - Squadron Medical	10	1840			eLink
10538 - Smith and Nephew Orthopaedics	10	185			eMail
11943 - Olympus Keymed Ltd	10	182			eMail
11692 - Smiths Medical International Ltd	10	124			eMail
10911 - Proact Medical Ltd	10	109			eMail
11676 - Philips Medical Systems UK Ltd	10	92			eMail
11687 - Ossur UK	10	89			eMail
10083 - Alcon Laboratories (UK) Ltd	10	82			eMail
10784 - Karl Storz Endoscopy (UK) Ltd (Consumables)	10	60			eMail
11665 - Sorin Group UK Ltd	10	59			eMail
11146 - VWR International Ltd	10	55			eMail
10744 - Dako UK Ltd	10	30			eMail
10408 - John Weiss & Son Ltd	10	21			eMail

## E-TRADING STATISTICS – SEPTEMBER 2009 (EXCLUDING PHARMACY)

ORGANISATIONS	T/R	ORD	INV	CNF	TYPE
11722 - Arthrex Ltd	9	91			eMail
11803 - Ambu Ltd	9	77			eMail
11003 - Western Laboratory Solutions	9	70			eMail
12880 - Huntleigh Healthcare Ltd (Luton) Pressure Area Care Division	9	69			eMail
10189 - Bausch and Lomb (UK) Surgical	9	52			eMail
11686 - Mercian Surgical Supply Co Ltd	9	44			eMail
10723 - BDF Ltd	9	41			eMail
10739 - Clinipak Ltd	9	40			eMail
10913 - Promedics Ltd	9	38			eMail
10398 - Codan Ltd	9	31			eMail
10309 - Baxa Ltd	9	30			eMail
10982 - Leica Biosystems Peterborough Ltd	9	29			eMail
11941 - Carl Zeiss Ltd	9	26			eMail
10693 - Eschmann Holdings Ltd	9	19			eMail
10966 - Schuco International (London) Ltd	9	18			eMail
10698 - Nikomed Ltd	9	16			eMail
11659 - KCI Medical Ltd	8	121			eMail
12875 - Toffeln (Bristol)	8	115			eMail
11704 - Cardinal Health UK 306 Ltd	8	69			eMail
11611 - Homecraft Rolyan Ltd	8	59			eMail
10914 - Radiometer Ltd	8	48			eMail
10748 - Desoutter Medical Ltd	8	45			eMail
10604 - Rayner Intraocular Lenses Ltd	8	28			eMail
11747 - Mantis Surgical Ltd	8	27			eMail
10594 - Hospira	8	25			eMail
10717 - Athrodax Ltd	8	25			eMail
10965 - Sarstedt Ltd	8	25			eMail
10700 - Robinson Healthcare Ltd	8	24			eMail
10623 - Midco Print & Packaging Ltd	8	22			eMail
11536 - Cardinal Health UK 223 Ltd	7	96			eLink
12993 - Synergy Healthcare Plc	7	93			eMail
10724 - Fresenius Medical Care	7	74			eMail
11606 - Arjo Ltd	7	61			eMail
13079 - Diagmed Healthcare Ltd	7	54			eMail
11612 - Resmed (UK) Ltd	7	44			eMail
10719 - Fannin (UK) Ltd	7	40			eMail
10238 - Roche Diagnostics	7	38			eMail
13293 - Mentor Medical Systems Ltd	7	38			eMail
10871 - Acumed Ltd	7	35			eMail
11756 - GN Resound Ltd	7	34			eMail
11822 - Casmed International Ltd	7	33			eMail

## E-TRADING STATISTICS – SEPTEMBER 2009 (EXCLUDING PHARMACY)

ORGANISATIONS	T/R	ORD	INV	CNF	TYPE
10795 - Mediplus Ltd	7	30			eMail
11548 - Siemens Medical Solutions Diagnostics Europe Ltd	7	30			eMail
11750 - Marshall Products Ltd	7	29			eMail
11718 - Wright Medical UK Ltd	7	27			eMail
10473 - Fisher Scientific UK Ltd	7	23			eMail
10485 - Pall Medical	7	18			eMail
10531 - Guest Medical Ltd	7	16			eMail
10239 - Office Depot (UK) Ltd	6	1241			eLink
11721 - Medisavers	6	118			eMail
11717 - Bunzl Catering Supplies	6	64			eMail
11157 - 3M Health Care Ltd	6	56			eMail
11083 - Medicina Ltd	6	53			eMail
11236 - GE Medical Systems Information Technology	6	49			eMail
10175 - Allergan Ltd	6	49			eMail
10760 - Frontier Multigate	6	47			eMail
10699 - Paul Hartmann Ltd	6	47			eMail
11701 - Greiner Bio-One Ltd	6	45			eMail
11719 - Business Dictation Ltd	6	43			eMail
11797 - Corin Medical Ltd	6	35			eMail
10710 - DLS Medical	6	33			eMail
11762 - Mobilis Physiotherapy Ltd	6	31			eMail
13496 - Laerdal Medical AS	6	30			eMail
11714 - Vascutek Ltd	6	30			eMail
10976 - Spectrum Ophthalmics	6	30			eMail
11187 - P3 Medical Ltd	6	29			eMail
11805 - MDM Medical Ltd	6	28			eMail
11800 - Northstar Orthopaedics Ltd	6	26			eMail
12964 - Welch Allyn UK Ltd	6	22			eMail
10399 - Armstrong Medical Ltd	6	21			eMail
10080 - Bracco UK Ltd	6	20			eMail
10480 - Beckman Coulter UK Ltd	6	19			eMail
10088 - Banner Business Supplies Ltd	6	16			eMail
10122 - Convatec Ltd	6	14			eMail
10916 - RB Medical T/A RB Medical Eng	6	12			eMail
10089 - UDG	6	12			eMail
11000 - Vitalograph Ltd	6	7			eMail
11004 - Westfield Medical Ltd	5	50			eMail
13471 - Ev3 Ltd	5	44			eMail
11569 - Joint Replacement Instrumentation Ltd	5	37			eMail
10091 - Vernon-Carus Ltd	5	32			eMail
13073 - Anetic Aid Ltd	5	26			eMail

## E-TRADING STATISTICS – SEPTEMBER 2009 (EXCLUDING PHARMACY)

ORGANISATIONS	T/R	ORD	INV	CNF	TYPE
10598 - Distinctive Medical Products Ltd	5	23			eMail
11811 - Pyramed Ltd	5	23			eMail
11893 - Inspiration Healthcare Ltd	5	21			eMail
12107 - Cardinal Health UK 235 Ltd	5	21			eMail
10260 - Cardinal Health UK 306 Ltd (Alaris)	5	20			eMail
11763 - Pulse Surgical Ltd	5	17			eMail
10483 - The Tristel Company Ltd	5	17			eMail
10970 - Seward-Thackray	5	14			eMail
10526 - Helapet Ltd	5	10			eMail
11754 - Kavo Dental Ltd	5	9			eMail
11807 - Pulsion Medical UK Ltd Unit C4 Heathrow Corporate Park	5	9			eMail
10777 - Hollister Ltd	5	9			eMail
11002 - Wescott Medical Ltd	5	6			eMail
10961 - UK Laser	4	847			eMail
10746 - Datex Ohmeda Ltd	4	48			eMail
10062 - Smith & Nephew Healthcare - Wound Management	4	45			eMail
10086 - Bausch & Lomb	4	39			eMail
10771 - Grahame Gardner Ltd	4	38			eMail
10702 - Rusch UK Ltd	4	33			eMail
11496 - Oxylitre Ltd	4	30			eMail
10996 - Vacsax Ltd	4	29			eMail
10973 - Sigma Aldrich Co Ltd	4	28			eMail
13519 - Integra Neurosciences Ltd	4	28			eMail
13080 - DJO UK Ltd	4	23			eMail
12382 - Steris Ltd	4	21			eMail
10303 - RL Dolby & Co Ltd	4	19			eMail
10979 - Sterilox Technologies International Ltd	4	17			eMail
10902 - Nimans Ltd	4	15			eMail
11723 - Days Healthcare UK Ltd	4	15			eMail
11905 - Chartrite Ltd	4	15			eMail
11584 - Ecolab Ltd (Swindon)	4	14			eMail
10474 - Optident (Uk) Ltd	4	14			eMail
10709 - AMO UK Ltd	4	14			eMail
13574 - ERBE Medical UK Ltd	4	13			eMail
13560 - Maquet Ltd	4	12			eMail
11796 - American Medical Systems (UK) Ltd	4	12			eMail
10085 - Nutricia Ltd	4	12			eMail
13644 - Lancer UK Ltd	4	11			eMail
10798 - Mobilis Podiatry Ltd	4	7			eMail
13090 - Haag-Streit UK	4	7			eMail
13089 - Greenham Trading Ltd	4	7			eMail

## E-TRADING STATISTICS – SEPTEMBER 2009 (EXCLUDING PHARMACY)

ORGANISATIONS	T/R	ORD	INV	CNF	TYPE
10285 - Shield Medicare Ltd	4	6			eMail
12302 - Biotronik UK Ltd	4	5			eMail
10794 - Medical Wire & Equipment Company	4	4			eMail
11026 - NHS Supply Chain (Bridgwater)	3	1576	1439		eLink
11015 - Lyreco UK Ltd	3	874			eMail
10553 - Henry Schein Minerva Dental Ltd	3	232			eMail
11709 - Invacare (UK) Ltd	3	154			eMail
11912 - Newhall Janitorial Ltd	3	103			eMail
13092 - Harlow Printing Ltd	3	58			eMail
12950 - Unisurge International Ltd	3	55			eMail
10180 - Canonbury Products Ltd	3	38			eMail
10512 - Claudius Ash	3	34			eMail
11801 - Ortho Solutions Ltd	3	26			eMail
13427 - Respironics (UK) Ltd	3	25			eMail
13502 - Instrumentation Laboratory UK	3	20			eMail
10867 - Nisbets	3	20			eMail
10977 - Stamps Direct Ltd	3	19			eMail
11775 - BOC Ltd	3	16			eMail
11634 - GE Healthcare	3	16			eMail
10796 - Meltemi Company Clothing Ltd	3	14			eMail
12962 - HC Slingsby PLC	3	11			eMail
10774 - Gyrus International Ltd	3	11			eMail
10704 - Swann Morton Ltd	3	11			eMail
13545 - Prospect Diagnostics Ltd	3	10			eMail
13556 - Medisafe UK Ltd	3	10			eMail
13082 - DTR Medical Ltd	3	10			eMail
13414 - GBUK Healthcare	3	9			eMail
13976 - Systagenix (Wound Management)	3	9			eMail
13625 - Synectics Medical Ltd	3	8			eMail
10649 - Bio-Stat Diagnostic Systems	3	8			eMail
11715 - Owen Mumford Ltd	3	8			eMail
11049 - Jencons PLS	3	7			eMail
11942 - Sigmacon (UK) Ltd	3	7			eMail
12954 - A Algeo Ltd	3	7			eMail
11799 - Haemonetics Ltd	3	7			eMail
13675 - Deltex Medical Ltd Deltex House	3	6			eMail
10745 - Datascope	3	6			eMail
13527 - Single Use Surgical Ltd	3	6			eMail
10785 - Kelway (UK) Ltd	3	6			eMail
13624 - Mindray (UK) Ltd	3	6			eMail
10188 - Merck Serono Ltd	3	6			eMail

## E-TRADING STATISTICS – SEPTEMBER 2009 (EXCLUDING PHARMACY)

ORGANISATIONS	T/R	ORD	INV	CNF	TYPE
10278 - Maco Pharma UK Ltd	3	5			eMail
10753 - Euro Office Equipment	3	5			eMail
10960 - South Western Surgical Ltd	3	5			eMail
10624 - Lidco Ltd	3	4			eMail
10381 - CliniMed Ltd	3	4			eMail
11808 - Cryolife Europa Ltd	3	3			eMail
11610 - Creed Catering Supplies Ltd	2	36			eMail
11675 - Microvention UK Ltd	2	36			eMail
11684 - Apatech Ltd	2	34			eMail
13068 - Supplies Team	2	31			eLink
12868 - Hospital Innovations Ltd	2	31			eMail
11688 - DBC Foodservice	2	25			eMail
13027 - LaserBand LLC	2	24			eMail
13680 - Micrus Endovascular UK Ltd Unit 4 Stansted Courtyard	2	23			eMail
11159 - Henry Schein Procure	2	22			eMail
10956 - Arrow International UK Ltd	2	20			eMail
13618 - Simon Jersey Ltd	2	17			eMail
13439 - Protech Medical Ltd	2	16			eMail
11092 - Screwfix Direct	2	16			eMail
11667 - Safewear	2	14			eMail
13342 - Nipro Europe - UK Branch	2	13			eMail
13450 - Vital Signs	2	12			eMail
12955 - All Print	2	11			eMail
13533 - Exmoor Plastics Ltd	2	11			eMail
13557 - Medical Innovations Ltd	2	11			eMail
13621 - Molton Brown Limited	2	11			eMail
13074 - Arval UK Ltd	2	11			eMail
13445 - Solmedia Ltd	2	10			eMail
11530 - Full Support Healthcare Ltd	2	10			eMail
13558 - Siemens Healthcare Diagnostics Ltd	2	10			eMail
13634 - Altrax Group Limited	2	9			eMail
11093 - LH Evans	2	9			eMail
10775 - HPC Healthline UK Ltd	2	9			eMail
12956 - Argos Business Solutions Corporate	2	9			eMail
13566 - Cardiac Services UK Ltd	2	8			eMail
13648 - Delta Surgical Ltd	2	8			eMail
13532 - NeuroTherm Ltd	2	8			eMail
10261 - Eden Medical UK Limited	2	8			eMail
13499 - Icom Works Ltd	2	7			eMail
13607 - Cochlear Europe Ltd	2	7			eMail
13093 - Pearson Education Ltd	2	7			eMail

## E-TRADING STATISTICS – SEPTEMBER 2009 (EXCLUDING PHARMACY)

ORGANISATIONS	T/R	ORD	INV	CNF	TYPE
13592 - Paramount Medical Solutions Ltd	2	6			eMail
10275 - Grifols UK Ltd	2	6			eMail
13605 - Radi Medical Systems Ltd	2	6			eMail
13664 - Insight Medical Products Ltd	2	6			eMail
11130 - Millipore (Uk) Ltd	2	5			eMail
11391 - Arco Wessex (East Anglia)	2	5			eMail
13572 - Kingspeed Services	2	5			eMail
10634 - CME Mckinley Medical UK Ltd	2	5			eMail
10622 - Celfix Labels	2	5			eMail
11505 - Technoclone Ltd	2	5			eMail
10990 - Tomlinson Book Service	2	5			eMail
10787 - Kestrel Ophthalmics Ltd	2	5			eMail
13580 - Biohit Ltd (T/A Pipette Doctor)	2	5			eMail
13552 - Medrad UK Ltd	2	5			eMail
11755 - B & D Electromedical	2	5			eMail
13077 - Clement Clarke International Ltd	2	4			eMail
13492 - Medicare Colgate Ltd	2	4			eMail
11821 - Quadrant Medical Ltd	2	4			eMail
12876 - Kent Express Ltd	2	4			eMail
13550 - Core Surgical	2	4			eMail
13575 - Carleton Optical Ltd	2	4			eMail
13646 - Judd Medical Ltd	2	4			eMail
13412 - MGC Lamps Ltd	2	4			eMail
12298 - Peskett Solutions Ltd	2	4			eMail
13503 - Sysmex UK Ltd	2	4			eMail
13891 - Aspen Medical Thornhill Road	2	4			eMail
10276 - Guerbet Laboratories Ltd	2	3			eMail
13529 - AngioDynamics	2	3			eMail
13451 - Sebia UK Ltd	2	3			eMail
13087 - Glen Dimplex Home Appliance	2	3			eMail
10715 - Associated Hospital Supplies	2	3			eMail
11609 - Bristol Scale Service Company	2	3			eMail
13617 - Protec Medical Ltd	2	3			eMail
13619 - James Spencer & Co Ltd	2	3			eMail
13554 - Media Resources	2	3			eMail
11819 - Huntleigh Healthcare (Cardiff) Diagnostic Products Division	2	3			eMail
13340 - Genta Medical	2	3			eMail
13075 - AW Bent	2	3			eMail
13202 - Geistlich Sons Ltd	2	3			eMail
11813 - Orthodynamics	2	2			eMail
13832 - Cardinal Health UK 232 Ltd	2	2			eMail

## E-TRADING STATISTICS – SEPTEMBER 2009 (EXCLUDING PHARMACY)

ORGANISATIONS	T/R	ORD	INV	CNF	TYPE
11176 - Sartorius Ltd	2	2			eMail
11503 - Medical Access Ltd	2	2			eMail
10759 - 365 Healthcare	2	2			eMail
10677 - Imotek International Ltd	2	2			eMail
10293 - CSL Behring UK Ltd	2	2			eMail
13410 - Bio Diagnostics Ltd	2	2			eMail
11745 - Bayer PLC	2	2			eMail
11972 - GE Healthcare Accessories & Supplies Coolidge House	2	2			eMail
11901 - Temed	2	2			eMail
13553 - Litechnica Ltd	2	2			eMail
10995 - Uroplasty Ltd	2	2			eMail
10241 - GHX UK Ltd. (other)	2	2			eMail
11673 - Allens Printers and Stationers Ltd	1	210			eMail
11178 - WR Bishop	1	148			eMail
11574 - Dental Directory	1	132			eMail
13449 - Impact Office Equipment	1	105			eMail
11081 - Moreton Hall Press Ltd	1	101			eMail
10959 - Farmer Johns Dark Grove Farm Ltd	1	85			eMail
11072 - John Sheppard Butchers	1	79			eMail
10255 - Fast-Aid Products Ltd	1	73			eMail
13979 - Santana Hardware Ltd	1	50			eMail
12963 - Set (Office Supplies) Ltd	1	46			eMail
13032 - Stone Computers Ltd	1	41			eMail
11080 - Boyd Cooper Dimensions Ltd	1	37			eMail
11711 - NH Case Ltd	1	35			eMail
12958 - Comcen Computer Supplies Ltd	1	35			eMail
11696 - NHS Supply Chain (Maidstone)	1	34			eLink
13549 - Microtek Ltd	1	34			eMail
11613 - Alexandra Plc (Scotland)	1	33			eMail
13513 - Health Care Services	1	30			eMail
13548 - K-Med	1	27			eMail
10529 - Nestle Clinical Nutrition	1	26			eMail
10447 - Vitaflo Ltd	1	24			eMail
13910 - Pads Printing & Stationary Limited	1	23			eMail
11694 - NHS Supply Chain (Runcorn)	1	21			eLink
12393 - Ellis Eggs	1	21			eMail
13031 - Computerworld (Wales) Ltd	1	20			eMail
13370 - Allens Office Ltd	1	20			eMail
10703 - Shermond	1	20			eMail
13441 - R & L Slaughter Ltd	1	19			eMail
11079 - Computing Needs Ltd	1	18			eMail

## E-TRADING STATISTICS – SEPTEMBER 2009 (EXCLUDING PHARMACY)

ORGANISATIONS	T/R	ORD	INV	CNF	TYPE
11703 - Key Catering Plc	1	17			eMail
11237 - Bridgend Office Furniture	1	16			eMail
11720 - Orange PCS Ltd	1	14			eMail
13514 - Applera UK T/A Applied Biosystems	1	14			eMail
10747 - Deb Ltd	1	13			eMail
13368 - JohnsonDiversey UK Ltd	1	12			eMail
12856 - Blackwell University Bookshop	1	12			eMail
11660 - R82 UK Ltd	1	12			eMail
13944 - Misco Computer Supplies	1	11			eMail
11672 - Gerald Simonds Healthcare Ltd	1	11			eMail
11818 - Medichem International (Marketing) Ltd	1	11			eMail
12854 - Lexar Media	1	10			eMail
10690 - B M Polyco Ltd	1	9			eMail
13145 - Pasta King UK Ltd.	1	8			eMail
13578 - Ortho Care (UK) Ltd	1	8			eMail
13683 - Imperial Hygiene Services Limited	1	8			eMail
13590 - Lawmed Ltd	1	8			eMail
10799 - Monosol AF Ltd	1	8			eMail
11804 - Ash Medical Ltd	1	7			eMail
10066 - Phoenix Healthcare Distribution Ltd	1	7		7	eMail
13530 - Hygiene Systems Ltd	1	7			eMail
11806 - Surgi C Ltd The Innovation Centre, Longbridge Technology Park	1	7			eMail
11933 - Cardiff Lock & Safe Co Ltd	1	6			eMail
13588 - Movianto UK Ltd	1	6			eMail
10712 - Arco Wessex (Ossett)	1	6			eMail
12394 - PM Labels	1	6			eMail
13564 - Medisco Medical Systems	1	6			eMail
10481 - Medex Medical Ltd	1	6			eMail
10743 - Cuxson Gerrard & Co Ltd	1	6			eMail
13598 - Osteotec Ltd	1	5			eMail
13584 - Medicell Ltd	1	5			eMail
11932 - Browning Jones & Morris Ltd	1	5			eMail
13436 - Bio-Rad Laboratories	1	5			eMail
13535 - Medical Devices Ltd	1	5			eMail
13537 - Bunzl Cleaning and Hygiene Supplies	1	5			eMail
13528 - Alliance Disposables	1	5			eMail
11760 - Siemens Hearing Instruments Ltd	1	5			eMail
13072 - Amberwell Engineering Services	1	5			eMail
11759 - SFA Medical	1	4			eMail
13780 - PFM Medical UK Ltd	1	4			eMail
13804 - Labcold Ltd	1	4			eMail

## E-TRADING STATISTICS – SEPTEMBER 2009 (EXCLUDING PHARMACY)

ORGANISATIONS	T/R	ORD	INV	CNF	TYPE
13645 - Uniforms for Work Ltd	1	4			eMail
11133 - Pentland Medical Ltd	1	4			eMail
11226 - Stericom Ltd	1	4			eMail
11689 - Highway & Industrial Equipment Ltd	1	4			eMail
13536 - Hospital General Supplies	1	4			eMail
13612 - Spacelabs Healthcare Ltd	1	4			eMail
10947 - Quantum Diagnostics Ltd	1	4			eMail
10198 - Oticon Ltd	1	4			eMail
13992 - Cardiologic Ltd	1	4			eMail
11570 - Colin Robinson Printers Ltd	1	3			eMail
13816 - Blow UK Multimedia Ltd	1	3			eMail
13630 - Malosa Medical	1	3			eMail
13656 - Dantec Dynamics Ltd	1	3			eMail
13589 - Rex Regal Ltd	1	3			eMail
13562 - Kimberly-Clark Healthcare	1	3			eMail
11706 - Micronclean (Newbury) Ltd	1	3			eMail
10401 - E-Z-EM (UK) Ltd	1	3			eMail
10728 - BMS Critical Care Ltd.	1	3			eMail
10963 - Sallis Ltd	1	3			eMail
13779 - Maplin Electronics Ltd Brookfields Way	1	3			eMail
13829 - Dawmed International Ltd	1	3			eMail
13687 - Surgical Instruments Group Holdings Ltd	1	3			eMail
13534 - Hospital Direct (Marketing) Ltd	1	3			eMail
13501 - Clinical Innovations Europe	1	3			eMail
11930 - Talbot-Owen Tools & Fasteners Ltd	1	3			eMail
11814 - Caridian BCT Europe NV	1	3			eMail
13437 - Phadia Ltd	1	3			eMail
13200 - Diagnostic Sonar Ltd	1	3			eMail
13941 - Veni Vidi Limited	1	3			eMail
13314 - Haigh Engineering Co Ltd	1	2			eMail
13086 - Gilbert & Mellish Ltd	1	2			eMail
13078 - Design Stage Ltd	1	2			eMail
13407 - Abbott Vascular	1	2			eMail
13494 - Euro Energy Resources Ltd	1	2			eMail
13457 - Launch & Biokit	1	2			eMail
12957 - Boucon Network Solutions Ltd	1	2			eMail
13540 - W.K.Thomas & Co Ltd	1	2			eMail
13531 - Hologic UK Ltd	1	2			eMail
13563 - S Teasdale (Hospital Equipment) Ltd	1	2			eMail
13613 - Hill-Rom UK	1	2			eMail
13585 - New Co-Ordinates Ltd	1	2			eMail

## E-TRADING STATISTICS – SEPTEMBER 2009 (EXCLUDING PHARMACY)

ORGANISATIONS	T/R	ORD	INV	CNF	TYPE
13587 - Anita UK Ltd	1	2			eMail
13691 - Medical Graphics (UK) Ltd Unit 9 Clifton Centre	1	2			eMail
13620 - Agfa-Gevaert Ltd	1	2			eMail
13655 - Biocomposites Ltd	1	2			eMail
13670 - Thamesmead Business Services	1	2			eMail
13899 - Avery Dennison Retail Information Services UK Limited	1	2			eMail
13993 - WL Gore & Associates (UK) Ltd Heatherpark	1	2			eMail
10920 - Remploy Healthcare	1	2			eMail
10751 - Dudley Berrys Solutions	1	2			eMail
13444 - Seton Ltd	1	2			eMail
13435 - Anachem Ltd	1	2			eMail
11857 - Legacy Telecom	1	2			eMail
13573 - Melyd Medical Ltd	1	2			eMail
13581 - Gelpack Excelsior Ltd	1	2			eMail
13586 - New Splint Ltd	1	2			eMail
13601 - Thomas Fattorini Ltd	1	2			eMail
13543 - ADC Fire Systems	1	2			eMail
13635 - Nipro Europe N.V UK Branch	1	2			eMail
13914 - GKS Curtain Services Hubert House	1	2			eMail
13693 - YSI (UK) Limited 119 Fleet Road	1	2			eMail
13731 - Leica Microsystems (UK) Ltd	1	2			eMail
13763 - Advantech Surgical	1	2			eMail
11551 - Q-Med (UK) Ltd	1	2			eMail
11478 - Quality Enabling Devices Ltd	1	2			eMail
11172 - Amercare Ltd	1	2			eMail
10912 - Profile Respiratory System Ltd	1	2			eMail
10268 - Axis-Shield Diagnostics Ltd	1	2			eMail
10301 - IDIS Ltd	1	2			eMail
10472 - Diagenics Ltd	1	2			eMail
10752 - EMS Medical Group Ltd	1	2			eMail
14007 - LIDCO Limited 16 Orsman Road	1	2			eMail
13924 - Bolton Surgical Limited	1	2			eMail
14051 - Accrington Surgical Ltd	1	2			eMail
13461 - CJ Medical Ltd	1	2			eMail
13465 - B Braun Avitum UK Ltd	1	2			eMail
14033 - Imaging Equipment	1	2			eMail
14057 - Landauer	1	2			eMail
12852 - Fenwal UK Ltd	1	1			eLink
14015 - Plinth 2000 Limited Wetheringsett Manor	1	1			eMail
10561 - Dentoid Ltd	1	1			eMail
10565 - AGMA Ltd	1	1			eMail

## E-TRADING STATISTICS – SEPTEMBER 2009 (EXCLUDING PHARMACY)

ORGANISATIONS	T/R	ORD	INV	CNF	TYPE
10279 - Meddis a Division of Pro-Care Ltd	1	1			eMail
10318 - Cherwell Laboratories Ltd	1	1			eMail
10967 - Seca Ltd	1	1			eMail
11144 - Inverness Medical UK	1	1			eMail
11197 - Advancis	1	1			eMail
11685 - Chas Blatchford & Sons	1	1			eMail
13776 - Siemens Medical Solutions Contracts Division	1	1			eMail
13784 - OPL Limited Unit 3,Trojan Business Centre	1	1			eMail
13791 - York Medical Technologies Ltd Unit 12, Brookfield Business Park	1	1			eMail
13813 - Cardinal Health 240 Ltd	1	1			eMail
13732 - M · I · S · S Ophthalmics Ltd Unit 3, Ryder Court	1	1			eMail
13689 - Incom Telecommunications	1	1			eMail
13933 - Frobishers Alphinbrook House	1	1			eMail
13822 - Stanbridge Limited Cray Valley Road	1	1			eMail
13841 - BBraun (Repairs)	1	1			eMail
13862 - Edward Marcus Ltd 3 Marrtree Business Park	1	1			eMail
13868 - D-Line (UK) Ltd	1	1			eMail
13636 - Kannegiesser UK Ltd	1	1			eMail
13631 - V.M. Marketing Ltd	1	1			eMail
13629 - Howard Warwick Associates Ltd	1	1			eMail
13649 - Olympic Print & Design	1	1			eMail
13666 - Cromptons Healthcare	1	1			eMail
13672 - SKF Services Ltd	1	1			eMail
13546 - Speciality Labels	1	1			eMail
13538 - Wise Worksafe	1	1			eMail
13541 - Intuitive Surgical Sarl	1	1			eMail
13489 - Propeller Multimedia Ltd	1	1			eMail
13493 - Charles River Laboratories	1	1			eMail
13597 - Marlux Medical Limited	1	1			eMail
13570 - Cardinal Health UK 236 Ltd	1	1			eMail
12391 - Cambio Ltd	1	1			eMail
13091 - Halo Healthcare Ltd	1	1			eMail
13438 - Pro-lab Diagnostics	1	1			eMail
13456 - Camlab Ltd	1	1			eMail
13083 - European Electronique	1	1			eMail
13084 - Everything X-Ray Ltd	1	1			eMail
13294 - Sterilin Ltd	1	1			eMail
13315 - Easicook Microwave Ltd	1	1			eMail
13316 - Travis Perkins	1	1			eMail
12916 - Inverness Medical UK Ltd	1	1			eMail
13076 - Synmed Ltd	1	1			eMail

## E-TRADING STATISTICS – SEPTEMBER 2009 (EXCLUDING PHARMACY)

ORGANISATIONS	T/R	ORD	INV	CNF	TYPE
10204 - Healthcare Logistics	1	1			eMail
10566 - Godfrey Syrett Ltd	1	1			eMail
10396 - Advanced Medical Optics	1	1			eMail
11705 - Independent Catering Supplies	1	1			eMail
11724 - Response Medical Equipment Ltd	1	1			eMail
11126 - Kays Medical	1	1			eMail
10873 - Pearsalls Ltd	1	1			eMail
13943 - Posturite Ltd	1	1			eMail
14029 - Platon Medical Ltd	1	1			eMail
13854 - Traka Limited	1	1			eMail
13858 - Joseph Alan Limited	1	1			eMail
13650 - OPT Complete Print Solutions Ltd	1	1			eMail
13652 - Vitech Scientific Ltd	1	1			eMail
13818 - Prontaprint	1	1			eMail
13821 - Karl Storz Endoscopy (UK) Ltd (Repairs)	1	1			eMail
13828 - The Binding Site Limited	1	1			eMail
13594 - The Balloon Shop	1	1			eMail
13600 - Mitre, Hall and Letts	1	1			eMail
13604 - Salient Surgical Technologies Inc	1	1			eMail
13610 - Calumet Photographic	1	1			eMail
13615 - Jade Medical Ltd	1	1			eMail
13616 - Thomas Kneale & Co. Ltd	1	1			eMail
13632 - Aslotel Limited	1	1			eMail
13633 - Quadrtech Diagnostics Ltd	1	1			eMail
13637 - Monmouth Surgical Ltd	1	1			eMail
13565 - Quest Biomedical Ltd	1	1			eMail
13559 - Penlon Ltd	1	1			eMail
12961 - Paper House Plus Ltd	1	1			eMail
12864 - JLA Ltd	1	1			eMail
11931 - Plumbase Ltd	1	1			eMail
11911 - Scilabware Ltd	1	1			eMail
11934 - Total Filtration Ltd	1	1			eMail
12297 - Bio Products Laboratory	1	1			eMail
11833 - A-T Instruments Ltd	1	1			eMail
11810 - Sonosite Ltd	1	1			eMail
13470 - A Menarini Diagnostics UK Ltd	1	1			eMail
13434 - Alpha Laboratories	1	1			eMail
13116 - Cardiacare Ltd	1	1			eMail
14085 - Akron	1	1			eMail
14031 - Applied Healthcare Ltd	1	1			eMail
10720 - B&H Surgical Instruments	1	1			eMail

**E-TRADING STATISTICS – SEPTEMBER 2009**  
(EXCLUDING PHARMACY)

ORGANISATIONS	T/R	ORD	INV	CNF	TYPE
11001 - Warwick Sasco Ltd	1	1			eMail
13767 - Baxter Healthcare Ltd (renal) Renal Customer Services	1	1			eMail
13842 - Codman Repairs	1	1			eMail
13678 - Cellpath Plc	1	1			eMail
14062 - Gratnells Ltd	1	1			eMail
13917 - Microgen Bioproducts Ltd	1	1			eMail
13886 - Continental Chef Supplies Ltd	1	1			eMail
13898 - Body Clock Health Care Limited	1	1			eMail
13611 - Environmental Hygiene Products Ltd	1	1			eMail
13098 - Pro-Care Ltd	1	1			eMail

## E-TRADING STATISTICS – SEPTEMBER 2009 (EXCLUDING PHARMACY)

### ACTIVE BUYING ORGANISATIONS

*See the notes at the end of this document, for an explanation of what the values represent.*

ORGANISATIONS	T/R	ORD	INV	CNF	TYPE
The London Clinic (other)	269	1736		144	Meditech
Cardiff and Vale NHS Trust University Hospital of Wales (oracle)	211	6615	1826	504	Oracle
HCA International Ltd (other)	183	4006	207	506	Meditech
Leeds Teaching Hospitals NHS Trust St. James's University Hospital (oracle)	180	2110	148	381	Oracle
Aneurin Bevan Local Health Board Llanfrechfa Grange Hospital (oracle)	152	2025		61	Oracle
Abertawe Bro Morgannwg University NHS Trust Trust HQ (oracle)	135	1995	66	260	Oracle
The Ipswich Hospital NHS Trust (eros)	113	957		133	EROS
North Bristol NHS Trust Trust Headquarters (eros)	112	1080		209	EROS
Blackpool, Fylde & Wyre Hospitals NHS Foundation Trust Blackpool Victoria Hospital (powergate)	110	828		230	PowerGate
Welsh Health Supplies Central Stores (oracle)	105	822		48	Oracle
University Hospitals Bristol NHS Foundation Trust Trust Headquarters (eros)	97	1083		164	EROS
Nottingham University Hospitals NHS Trust Queens Medical Centre (powergate)	87	1187		357	PowerGate
Fife Healthcare Supplies (powergate)	75	1086		186	PowerGate
James Paget University Hospitals NHS Foundation Trust James Paget Hospital (powergate)	71	249		15	PowerGate
Heart of England NHS Foundation Trust Birmingham Heartlands Hospital (oracle)	67	923		296	Oracle
The Queen Elizabeth Hospital King's Lynn NHS Trust Queen Elizabeth Hospital (powergate)	65	432		44	PowerGate
Cumbria NHS Procurement Services Cumberland Infirmary (powergate)	64	367		63	PowerGate
Weston Area Health NHS Trust Weston General Hospital (eros)	64	285		20	EROS
West Suffolk Hospitals NHS Trust West Suffolk Hospital (powergate)	64	204		26	PowerGate
Bupa Cromwell Hospital (powergate)	63	219		42	PowerGate
Norfolk & Norwich University Hospital NHS Trust Norfolk & Norwich University Hospital (powergate)	39	734		106	PowerGate
Western Sussex Hospitals NHS Trust Southlands Hospital (powergate)	37	274		42	PowerGate
Frimley Park Hospital NHS Foundation Trust Frimley Park Hospital (eros)	28	435		164	EROS
Royal Bournemouth & Christchurch Hosp NHS Found Trust The Royal Bournemouth Hospital (powergate)	27	1061	132	173	PowerGate
Bristol PCT South Plaza (eros)	13	35			EROS
Oxford Radcliffe Hospitals NHS Trust John Radcliffe Hospital (oracle)	10	572	7	337	Oracle
Barts and The London NHS Trust Trust Offices, Whitechapel (uk procure)	10	345		148	Ukprocure
NHS Supply Chain (Normanton) (distributor)	9	3016	4	1864	Distributor
South Gloucestershire PCT 1 Monarch Court, (eros)	8	14			EROS
Lancashire Teaching Hospitals NHS Foundation Trust Chorley & South Ribble District General Hospital (integra)	7	174		50	Integra
South Tees Hospitals NHS Trust James Cook University Hospital (eros)	6	324		258	EROS

## E-TRADING STATISTICS – SEPTEMBER 2009 (EXCLUDING PHARMACY)

ORGANISATIONS	T/R	ORD	INV	CNF	TYPE
County Durham & Darlington NHS Foundation Trust University Hospital of North Durham (eros)	6	238		146	EROS
North Tees and Hartlepool NHS Foundation Trust University Hospital of Hartlepool (eros)	6	109		80	EROS
Royal Surrey County Hospital NHS Trust Royal Surrey County Hospital (uk procure)	6	92		87	Ukprocure
North Somerset PCT Waverley House (eros)	6	18			EROS
AAH Hospital Service (Coventry) (distributor)	5	426			Distributor
Plymouth Hospitals NHS Trust Derriford Hospital (sbs)	4	193	39	132	SBS
North Bristol NHS Trust Frenchay Hospital (e-direct)	4	46		10	NHSSC
Hull and East Yorkshire Hospitals NHS Trust Hull Royal Infirmary (e-direct)	4	32		4	NHSSC
Darlington PCT Dr Piper House (eros)	4	20		10	EROS
Bunzl Healthcare Ltd (distributor)	3	179		136	Distributor
Alliance Healthcare (Distribution) Ltd. (distributor)	3	96			Distributor
County Durham & Darlington NHS Foundation Trust Darlington Memorial Hospital (e-direct)	3	81		65	NHSSC
Royal Liverpool & Broadgreen University Hospitals NHS Trust Royal Liverpool University Hospital (e-direct)	3	36		29	NHSSC
Chesterfield Royal Hospital NHS Foundation Trust (e-direct)	3	34			NHSSC
Doncaster & Bassetlaw Hospitals NHS Trust Doncaster Royal Infirmary (e-direct)	3	33		30	NHSSC
South Tees Hospitals NHS Trust James Cook University Hospital (e-direct)	3	28			NHSSC
Gloucestershire Hospitals NHS Foundation Trust Trust HQ (e-direct)	3	27			NHSSC
The Newcastle Upon Tyne Hospitals NHS Foundation Trust Freeman Hospital (e-direct)	3	22			NHSSC
North Cumbria Acute Hospitals NHS Trust West Cumberland Hospital (e-direct)	3	18		9	NHSSC
Portsmouth Hospitals NHS Trust De La Court House, Queen Alexandra Hospital (e-direct)	3	18			NHSSC
Calderdale & Huddersfield NHS Trust Royal Infirmary (e-direct)	3	17			NHSSC
Barnsley Hospital NHS Foundation Trust (e-direct)	3	16			NHSSC
Royal Cornwall Hospitals NHS Trust Royal Cornwall Hospital (e-direct)	3	16			NHSSC
Leeds Teaching Hospitals NHS Trust St. James's University Hospital (e-direct)	3	15			NHSSC
The Shrewsbury and Telford Hospital NHS Trust (e-direct)	3	15			NHSSC
United Bristol Healthcare NHS Trust (e-direct)	3	15			NHSSC
Wirral University Teaching Hospital NHS Foundation Trust Arrowe Park Hospital (e-direct)	3	15		1	NHSSC
Heart of England NHS Foundation Trust Birmingham Heartlands Hospital (e-direct)	3	10			NHSSC
Isle Of Wight NHS PCT St. Marys Hospital (e-direct)	3	10			NHSSC
Devon PCT County Hall (sbs)	3	10		4	SBS
St Helens and Knowsley Hospitals NHS Trust Whiston Hospital (e-direct)	3	8			NHSSC
Winchester and Eastleigh Healthcare NHS Trust Royal Hampshire County Hospital (e-direct)	3	7		1	NHSSC

## E-TRADING STATISTICS – SEPTEMBER 2009 (EXCLUDING PHARMACY)

ORGANISATIONS	T/R	ORD	INV	CNF	TYPE
Cardiff and Vale NHS Trust University Hospital of Wales (e-direct)	2	134		131	NHSSC
Ashford and St Peter's Hospitals NHS Trust St Peters Hospital (powergate)	2	43			PowerGate
Highland NHS Board Assynt House (pecos)	2	37			PECOS
North Staffordshire Combined Healthcare NHS Trust Bucknall Hospital (e-direct)	2	33			NHSSC
Barnet and Chase Farm Hospitals NHS Trust Barnet General Hospital (e-direct)	2	30			NHSSC
Brighton & Sussex University Hospitals NHS Trust Royal Sussex County Hospital (e-direct)	2	30			NHSSC
University Hospital Birmingham NHS Foundation Trust Trust HQ, PO Box 9551, Queen Elizabeth Medical Centre (e-direct)	2	30			NHSSC
Sheffield Teaching Hospitals NHS Foundation Trust Northern General Hospital (e-direct)	2	29			NHSSC
Birmingham Children's Hospital NHS Trust (e-direct)	2	26			NHSSC
University Hospital Coventry and Warwickshire NHS Trust Walsgrave General Hospital (e-direct)	2	26			NHSSC
Barts and The London NHS Trust Trust Offices, Whitechapel (e-direct)	2	24			NHSSC
Southampton University Hospitals NHS Trust Southampton General Hospital (e-direct)	2	22			NHSSC
Sangers (NI) Ltd (distributor)	2	20			Distributor
Weston Area Health NHS Trust Weston General Hospital (e-direct)	2	20		10	NHSSC
Central Manchester University Hospitals NHS Foundation Trust Manchester Royal Infirmary Hospital (oracle nep)	2	20		9	Oracle NEP
East Sussex Hospitals NHS Trust St. Annes House (e-direct)	2	19			NHSSC
Plymouth Hospitals NHS Trust Derriford Hospital (e-direct)	2	19			NHSSC
University Hospitals of Leicester NHS Trust Gwendolen House (e-direct)	2	19			NHSSC
North Tees and Hartlepool NHS Foundation Trust University Hospital Of Hartlepool (e-direct)	2	18			NHSSC
Pennine Acute Hospitals NHS Trust Trust Headquarters, North Manchester General Hospital (e-direct)	2	17			NHSSC
City Hospitals Sunderland NHS Foundation Trust Sunderland Royal Hospital (e-direct)	2	14			NHSSC
Lancashire Care NHS Foundation Trust Sceptre Point (e-direct)	2	14			NHSSC
Central Manchester & Manchester Childrens University Hospita Trust Headquarters, Cobbett House (e-direct)	2	13			NHSSC
East Kent Hospitals NHS Trust Kent and Canterbury Hospital (e-direct)	2	13			NHSSC
Southend University Hospital NHS Foundation Trust Southend Hospital (e-direct)	2	13			NHSSC
The Royal Wolverhampton Hospitals NHS Trust New Cross Hospital (e-direct)	2	13			NHSSC
West Suffolk Hospitals NHS Trust (e-direct)	2	13			NHSSC
Bolton Hospitals NHS Trust The Royal Bolton Hospital (e-direct)	2	12			NHSSC
Derby Hospitals NHS Foundation Trust Derby City General Hospital (e-direct)	2	12			NHSSC
Oxford Radcliffe Hospitals NHS Trust John Radcliffe Hospital (e-direct)	2	12			NHSSC
Royal West Sussex NHS Trust St Richard's Hospital (e-direct)	2	12			NHSSC
The Princess Alexandra Hospital NHS Trust (e-direct)	2	12			NHSSC

## E-TRADING STATISTICS – SEPTEMBER 2009 (EXCLUDING PHARMACY)

ORGANISATIONS	T/R	ORD	INV	CNF	TYPE
King's College Hospital NHS Foundation Trust (e-direct)	2	11			NHSSC
Northern Lincolnshire & Goole Hospitals NHS Trust Diana Princess Of Wales Hospital (e-direct)	2	11			NHSSC
Royal Devon and Exeter NHS Foundation Trust Royal Devon and Exeter Hospital (e-direct)	2	11			NHSSC
Alder Hey Children's NHS Foundation Trust Alder Hey Hospital (e-direct)	2	10			NHSSC
Epsom and St Helier University Hospitals NHS Trust St Helier Hospital (e-direct)	2	10			NHSSC
Kettering General Hospital NHS Trust (e-direct)	2	10			NHSSC
University Hospital Of South Manchester NHS Trust Wythenshawe Hospital (e-direct)	2	10			NHSSC
Whipps Cross University Hospital NHS Trust Whipps Cross Hospital (e-direct)	2	10			NHSSC
Worcestershire Acute Hospitals NHS Trust Worcestershire Royal Hospital (e-direct)	2	10			NHSSC
Wrightington, Wigan and Leigh NHS Foundation Trust Royal Albert Edward Infirmary (e-direct)	2	10			NHSSC
Dorset County Hospital NHS Foundation Trust Dorset County Hospital (e-direct)	2	9			NHSSC
Salford Royal NHS Foundation Trust Salford Royal (e-direct)	2	9			NHSSC
University Hospitals Of Morecambe Bay NHS Trust Westmorland General Hospital (e-direct)	2	9			NHSSC
Barking, Havering and Redbridge Hospitals NHS Trust Queens Hospital (e-direct)	2	8			NHSSC
Basingstoke and North Hampshire NHS Foundation Trust (e-direct)	2	8			NHSSC
Homerton University Hospital NHS Foundation Trust (e-direct)	2	8			NHSSC
Maidstone and Tunbridge Wells NHS Trust Maidstone Hospital (e-direct)	2	8			NHSSC
North East Wales NHS Trust Maelor General Hospital (e-direct)	2	8		7	NHSSC
Bromley Hospitals NHS Trust The Princess Royal University (e-direct)	2	7			NHSSC
Lancashire Teaching Hospitals NHS Foundation Trust Royal Preston Hospital (e-direct)	2	7			NHSSC
Queen Mary's Sidcup NHS Trust Queen Mary's Hospital (e-direct)	2	7			NHSSC
The North West London Hospitals NHS Trust Northwick Park Hospital (e-direct)	2	7			NHSSC
The Royal Bournemouth & Christchurch Hospitals NHS Trust Royal Bournemouth General Hospital (e-direct)	2	7			NHSSC
Ealing Hospital NHS Trust Ealing Hospital (e-direct)	2	6			NHSSC
East and North Hertfordshire NHS Trust Lister Hospital (e-direct)	2	6			NHSSC
Eastern and Coastal Kent PCT Brook House (e-direct)	2	6			NHSSC
Guys and St Thomas NHS Foundation Trust Trust Offices (e-direct)	2	6			NHSSC
Imperial College Healthcare NHS Trust St. Marys Hospital (e-direct)	2	6			NHSSC
Cambridge University Hospitals NHS Foundation Trust Addenbrookes Hospital (e-direct)	2	6			Oracle
Devon PCT County Hall (e-direct)	2	5			NHSSC
Milton Keynes Hospital NHS Foundation Trust (e-direct)	2	5			NHSSC
Papworth Hospital NHS Foundation Trust Papworth Hospital (e-direct)	2	5			NHSSC

## E-TRADING STATISTICS – SEPTEMBER 2009 (EXCLUDING PHARMACY)

ORGANISATIONS	T/R	ORD	INV	CNF	TYPE
Taunton and Somerset NHS Trust Musgrove Park Hospital (e-direct)	2	5			NHSSC
The Mid Cheshire Hospitals NHS Trust Leighton Hospital (e-direct)	2	5			NHSSC
University College London Hospitals NHS Trust (e-direct)	2	5			NHSSC
Redcar and Cleveland PCT Riverside House (eros)	2	4		2	EROS
Christie Hospital NHS Foundation Trust (e-direct)	2	4			NHSSC
Great Ormond Street Hospital NHS Trust (e-direct)	2	4			NHSSC
Rotherham NHS Foundation Trust Rivelin House (e-direct)	2	4			NHSSC
Somerset PCT Wynford House (e-direct)	2	4			NHSSC
Southport & Ormskirk NHS Trust (e-direct)	2	4			NHSSC
Stoke on Trent PCT Herbert Minton Building (e-direct)	2	4			NHSSC
Frimley Park Hospital NHS Foundation Trust Frimley Park Hospital (e-direct)	2	3			NHSSC
Liverpool Heart and Chest Hospital NHS Trust (e-direct)	2	3			NHSSC
Medway NHS Trust Medway Maritime Hospital (e-direct)	2	3			NHSSC
North Middlesex University Hospital NHS Trust (e-direct)	2	3			NHSSC
Royal Surrey County Hospital NHS Trust (e-direct)	2	3			NHSSC
South Warwickshire General Hospitals NHS Trust Warwick Hospital (e-direct)	2	3			NHSSC
The Royal Orthopaedic Hospital NHS Trust The Woodlands (e-direct)	2	3			NHSSC
York Hospitals NHS Trust York Hospital (e-direct)	2	3			NHSSC
Aintree University Hospitals NHS Foundation Trust University Hospital Aintree (e-direct)	2	2			NHSSC
Northern Devon Healthcare NHS Trust North Devon District Hospital (e-direct)	2	2			NHSSC
South Devon Healthcare NHS Trust Hengrave House, Torbay Hospital (e-direct)	2	2			NHSSC
The Lewisham Hospital NHS Trust University Hospital Lewisham (e-direct)	2	2			NHSSC
Surrey and Borders Partnership NHS Trust (powergate)	1	476			PowerGate
Mayday Healthcare NHS Trust Main Store (powergate)	1	346			PowerGate
Squadron Medical (distributor)	1	121			Distributor
Dudley Group Of Hospitals NHS Trust Russells Hall Hospital (powergate)	1	68			PowerGate
UCLH UCLH Trust Headquarters (adb)	1	64			ADB
Tayside NHS Ninewells Hospital and Med School, Level 9 (pecos)	1	47			PECOS
Aneurin Bevan Local Health Board (e-direct)	1	25			NHSSC
Southampton University Hospital Trust Mailpoint 18,Southampton General Hospital (sbs)	1	25			SBS
Basildon & Thurrock University Hospital NHS Trust Basildon Hospital (e-direct)	1	20			NHSSC
United Lincolnshire Hospitals NHS Trust Lincoln County Hospital (e-direct)	1	18			NHSSC
Peterborough and Stamford Hospitals NHS Foundation Trust Edith Cavell Hospital (e-direct)	1	15			NHSSC
North West Wales NHS Trust Ysbyty Gwynedd (e-direct)	1	14		13	NHSSC
Bedford Hospitals NHS Trust South Wing (e-direct)	1	13			NHSSC
Newham University Hospital NHS Trust Newham General Hospital (e-direct)	1	12			NHSSC
South Tyneside NHS Foundation Trust South Tyneside District Hospital (e-direct)	1	12			NHSSC
West Hertfordshire Hospitals NHS Trust Hemel Hempstead General Hospital,Trust Offices (e-direct)	1	10			NHSSC

## E-TRADING STATISTICS – SEPTEMBER 2009 (EXCLUDING PHARMACY)

ORGANISATIONS	T/R	ORD	INV	CNF	TYPE
Park Royal (e-direct)	1	10			NHSSC
East Lancashire Hospitals NHS Trust Royal Blackburn Hospital (e-direct)	1	9			NHSSC
Heatherwood & Wexham Park Hospitals NHS Foundation Trust Wexham Park Hospital (e-direct)	1	9			NHSSC
Royal Free Hampstead NHS Trust Royal Free Hospital (e-direct)	1	8			NHSSC
Salisbury NHS Foundation Trust Salisbury District Hospital (e-direct)	1	8			NHSSC
Western Sussex Hospitals NHS Trust Worthing Hospital (e-direct)	1	8			NHSSC
Essex Rivers Healthcare NHS Trust Colchester District General Hospital (e-direct)	1	7			NHSSC
Hereford Hospitals NHS Trust County Hospital (e-direct)	1	7			NHSSC
Mid Yorkshire Hospitals NHS Trust Rowan House (e-direct)	1	7			NHSSC
Mid Staffordshire General Hospitals NHS Trust Staffordshire General Hospital (e-direct)	1	6			NHSSC
Scarborough & North East Yorkshire Health Care NHS Trust Scarborough General Hospital (e-direct)	1	6			NHSSC
Buckinghamshire Hospitals NHS Trust Amersham Hospital (e-direct)	1	5			NHSSC
Burton Hospitals NHS Trust Queen's Hospital (e-direct)	1	5			NHSSC
Chelsea & Westminster Healthcare NHS Trust Chelsea & Westminster Hospital (e-direct)	1	5			NHSSC
James Paget University Hospitals NHS Foundation Trust (e-direct)	1	5			NHSSC
Luton and Dunstable Hospital NHS Foundation Trust (e-direct)	1	5			NHSSC
Tameside Hospital NHS Foundation Trust Tameside General Hospital (e-direct)	1	5			NHSSC
Queen Victoria Hospital NHS Foundation Trust (e-direct)	1	4			NHSSC
Trafford Healthcare NHS Trust Trafford General Hospital (e-direct)	1	4			NHSSC
Walsall Hospitals NHS Trust Manor Hospital (e-direct)	1	4			NHSSC
Middlesbrough PCT Riverside House (eros)	1	3			EROS
Blackpool, Fylde and Wyre Hospitals NHS Trust Victoria Hospital (e-direct)	1	3			NHSSC
East Cheshire NHS Trust Macclesfield District Gen Hospital (e-direct)	1	3			NHSSC
Gateshead Health NHS Foundation Trust Queen Elizabeth Hospital (e-direct)	1	3			NHSSC
Hinchingbrooke Health Care NHS Trust Hinchingbrooke Hospital (e-direct)	1	3			NHSSC
Mid Essex Hospital Services NHS Trust Broomfield Hospital (e-direct)	1	3			NHSSC
MOD - Medical Supplies (Donnington) Warehouse 33, Building 3 (e-direct)	1	3			NHSSC
Northampton General Hospital NHS Trust Cliftonville (e-direct)	1	3			NHSSC
Poole General Hospital NHS Trust Poole General Hospital NHS Trust HQ (e-direct)	1	3			NHSSC
The Hillingdon Hospital NHS Trust (e-direct)	1	3			NHSSC
Warrington and Halton Hospitals NHS Foundation Trust Warrington Hospital (e-direct)	1	3			NHSSC
Countess of Chester Hospital NHS Foundation Trust Countess Of Chester Hospital (e-direct)	1	2			NHSSC
First Trust Hospital (e-direct)	1	2			NHSSC
Mayday Healthcare NHS Trust Energy Centre (e-direct)	1	2			NHSSC

## E-TRADING STATISTICS – SEPTEMBER 2009 (EXCLUDING PHARMACY)

ORGANISATIONS	T/R	ORD	INV	CNF	TYPE
Nuffield Orthopaedic Centre NHS Trust (e-direct)	1	2			NHSSC
Sandwell and West Birmingham Hospitals NHS Trust City Hospital (e-direct)	1	2			NHSSC
Sheffield Childrens Hospital NHS Trust (e-direct)	1	2			NHSSC
St George's Healthcare NHS Trust St George's Hospital (e-direct)	1	2			NHSSC
Sussex Orthopaedic NHS Treatment Centre The Princess Royal Hospital (e-direct)	1	2			NHSSC
Swindon and Marlborough NHS Trust Great Western Hospital (e-direct)	1	2			NHSSC
Tower Hamlets PCT Trust Offices, Mile End Hospital (e-direct)	1	2			NHSSC
Yeovil District Hospital NHS Foundation Trust Yeovil District Hospital (e-direct)	1	2			NHSSC
Basingstoke and North Hampshire NHS Foundation Trust (@uk)	1	2		2	.@UK
Tees, Esk & Wear Valleys NHS Trust (eros)	1	1			EROS
Ashford and St Peter's Hospitals NHS Trust St Peters Hospital (e-direct)	1	1			NHSSC
Avon and Wiltshire Mental Health Partnership NHS Trust Bath NHS House (e-direct)	1	1			NHSSC
Conwy & Denbighshire NHS Trust Glan Clwyd Hospital (e-direct)	1	1			NHSSC
Cornwall and Isles Of Scilly PCT Sedgemoor Centre (e-direct)	1	1			NHSSC
Dudley Group Of Hospitals NHS Trust C Block (e-direct)	1	1			NHSSC
Face and Eye Clinic (e-direct)	1	1			NHSSC
General Medical Council 2nd Floor, Regents Place (e-direct)	1	1			NHSSC
Hastings and Rother PCT Bexhill Hospital (e-direct)	1	1			NHSSC
Herefordshire PCT Belmont Abbey (e-direct)	1	1			NHSSC
Kingspeed Services (e-direct)	1	1			NHSSC
Kirklees PCT St. Lukes House (e-direct)	1	1			NHSSC
North East London NHS Treatment Centre King George Hospital (e-direct)	1	1			NHSSC
Oxfordshire PCT Jubilee House (e-direct)	1	1			NHSSC
Queen Elizabeth Hospital NHS Trust Ranken House (e-direct)	1	1			NHSSC
Royal Berkshire Hospital NHS Foundation Trust Royal Berkshire Hospital (e-direct)	1	1			NHSSC
South Birmingham PCT Trust HQ, Moseley Hall Hospital (e-direct)	1	1			NHSSC
St Mary's NHS Trust St Mary's Hospital (e-direct)	1	1			NHSSC
Surrey and Sussex Healthcare NHS Trust East Surrey Hospital (e-direct)	1	1			NHSSC
Surrey PCT Cedar Court (e-direct)	1	1			NHSSC
Tees, Esk & Wear Valleys NHS Trust (e-direct)	1	1			NHSSC
The Birkdale Clinic (Rotherham) (e-direct)	1	1			NHSSC
The First Aid Box (e-direct)	1	1			NHSSC
The Royal Marsden NHS Foundation Trust Royal Marsden Hospital (e-direct)	1	1			NHSSC
West Middlesex University Hospital NHS Trust (e-direct)	1	1			NHSSC
45 Commando Royal Marines Medical Centre (e-direct)	1	1			NHSSC
Epsom Day Surgery Unit Ltd The Old Cottage Hospital (e-direct)	1	1			NHSSC
HMP Woodhill (e-direct)	1	1			NHSSC
Kimal Plc (e-direct)	1	1			NHSSC

## E-TRADING STATISTICS – SEPTEMBER 2009 (EXCLUDING PHARMACY)

ORGANISATIONS	T/R	ORD	INV	CNF	TYPE
Larkhill Garrison Medical Centre (e-direct)	1	1			NHSSC
Medway PCT Gillingham Business Park (e-direct)	1	1			NHSSC
National Procurement Scotland Gyle Square (other)	1	1			PECOS
St Anthonys Hospital (e-direct)	1	1			NHSSC
St. George's Hospital Medical School (e-direct)	1	1			NHSSC
NHS Supply Chain (Alfreton) (distributor)			3548		Distributor
Bromley Hospitals NHS Trust The Princess Royal University (sbs)			1		SBS
Bradford and Airedale Teaching PCT Douglas Mill (sbs)			2		SBS
Whipps Cross University Hospital NHS Trust Whipps Cross Hospital (sbs)			5		SBS
Winchester and Eastleigh Healthcare NHS Trust Royal Hampshire County Hospital (sbs)			5		SBS
Bradford Teaching Hospitals NHS Foundation Trust Bradford Royal Infirmary (sbs)			11		SBS
Barking, Havering and Redbridge Hospitals NHS Trust Queens Hospital (sbs)			14		SBS
Ashford and St Peter's Hospitals NHS Trust St Peters Hospital (sbs)			20		SBS
North Bristol NHS Trust Frenchay Hospital (sbs)			94		SBS
Portsmouth Hospitals NHS Trust De La Court House (sbs)			138		SBS
East Cheshire NHS Trust Macclesfield District Gen Hospital (sbs)			1		SBS
The Lewisham Hospital NHS Trust University Hospital Lewisham (sbs)			2		SBS
North Cheshire Hospitals Trust (sbs)			13		SBS
Queen Elizabeth Hospital NHS Trust Ranken House (sbs)			15		SBS
Surrey and Sussex Healthcare NHS Trust East Surrey Hospital (sbs)			17		SBS
East and North Hertfordshire NHS Trust Lister Hospital (sbs)			27		SBS

## **E-TRADING STATISTICS – SEPTEMBER 2009** (EXCLUDING PHARMACY)

### **GLOSSARY**

**T/R** This column represents the total number of active Trading Relationships for the current month.

**ORD** This column represents the total number of Purchase Orders for the current month.

**INV** This column represents the total number of Invoices for the current month.

**CNF** This column represents the total number of Order Confirmation messages for the current month.

### **TYPE**

For Selling Organisations this column shows the method used to deliver the electronic documents.

- eLink - The document is sent to the recipients system in an agreed Business to Business (B2B) format e.g. XML.
- eMail - The document is e-mailed to the recipient in a readable format (PDF).
- GXS - The document is forwarded via the EDI value added network: GXS Tradanet, in an agreed EDI format e.g. TRADACOMS.

For Buying Organisations this column shows the Purchasing/Finance System being used.